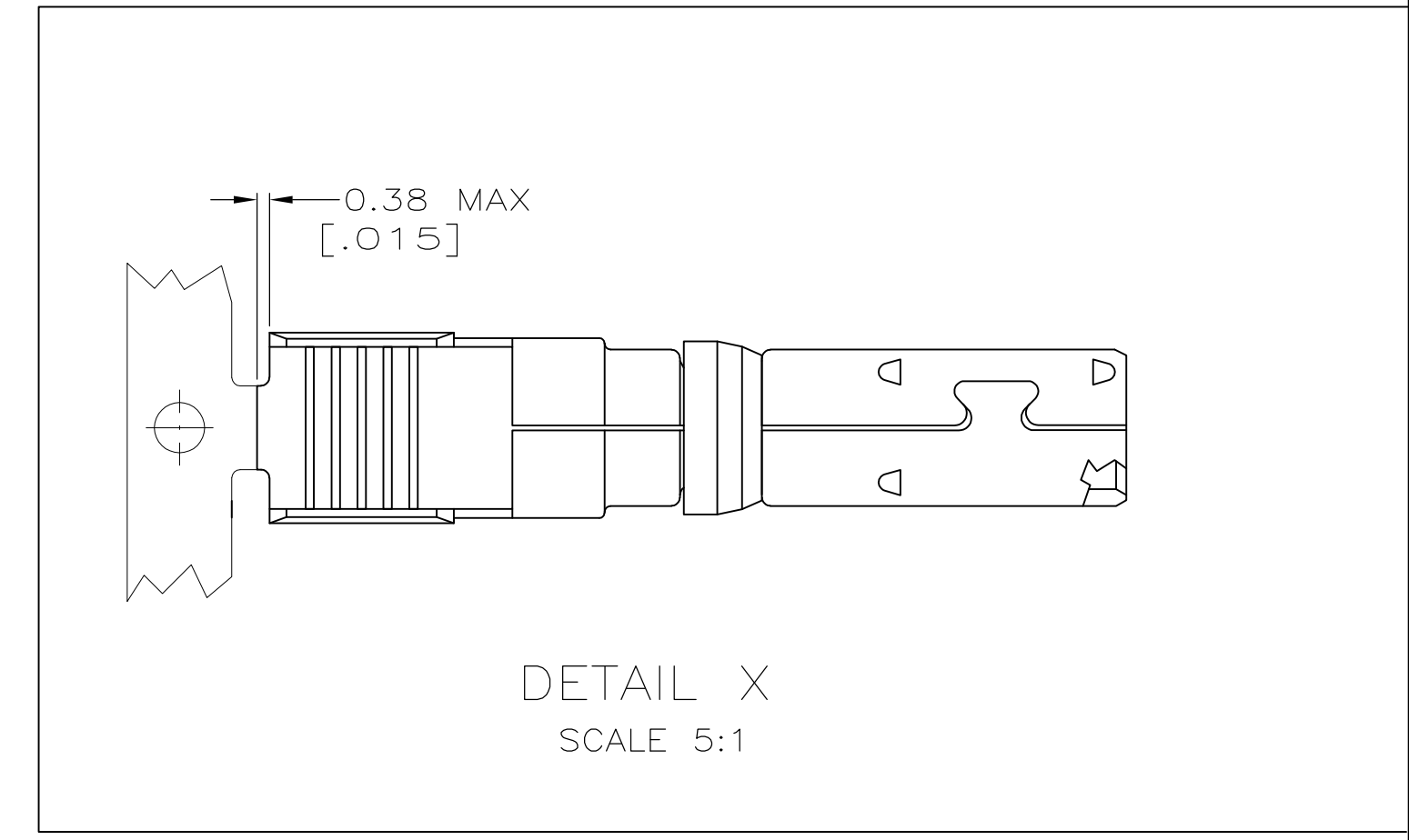
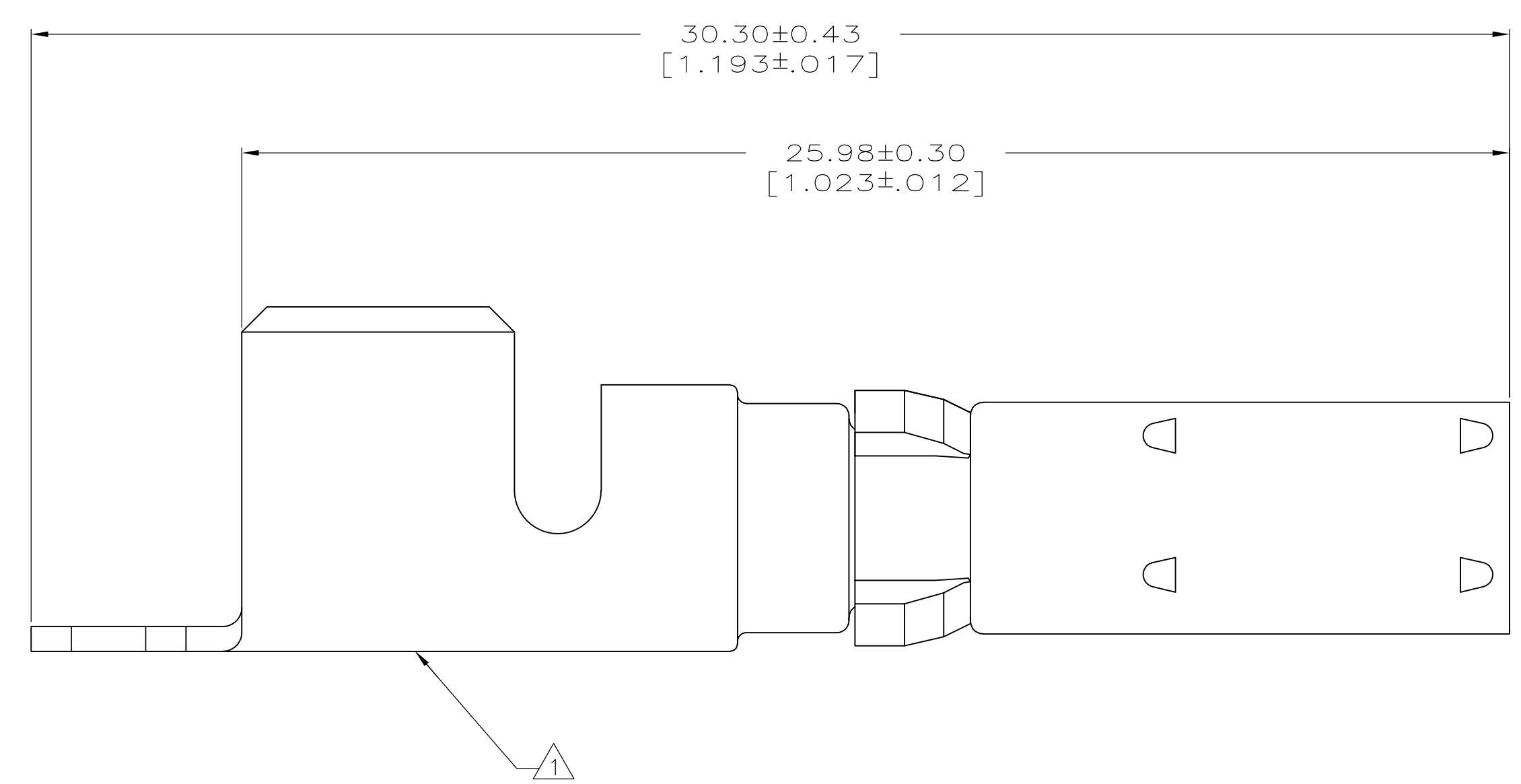
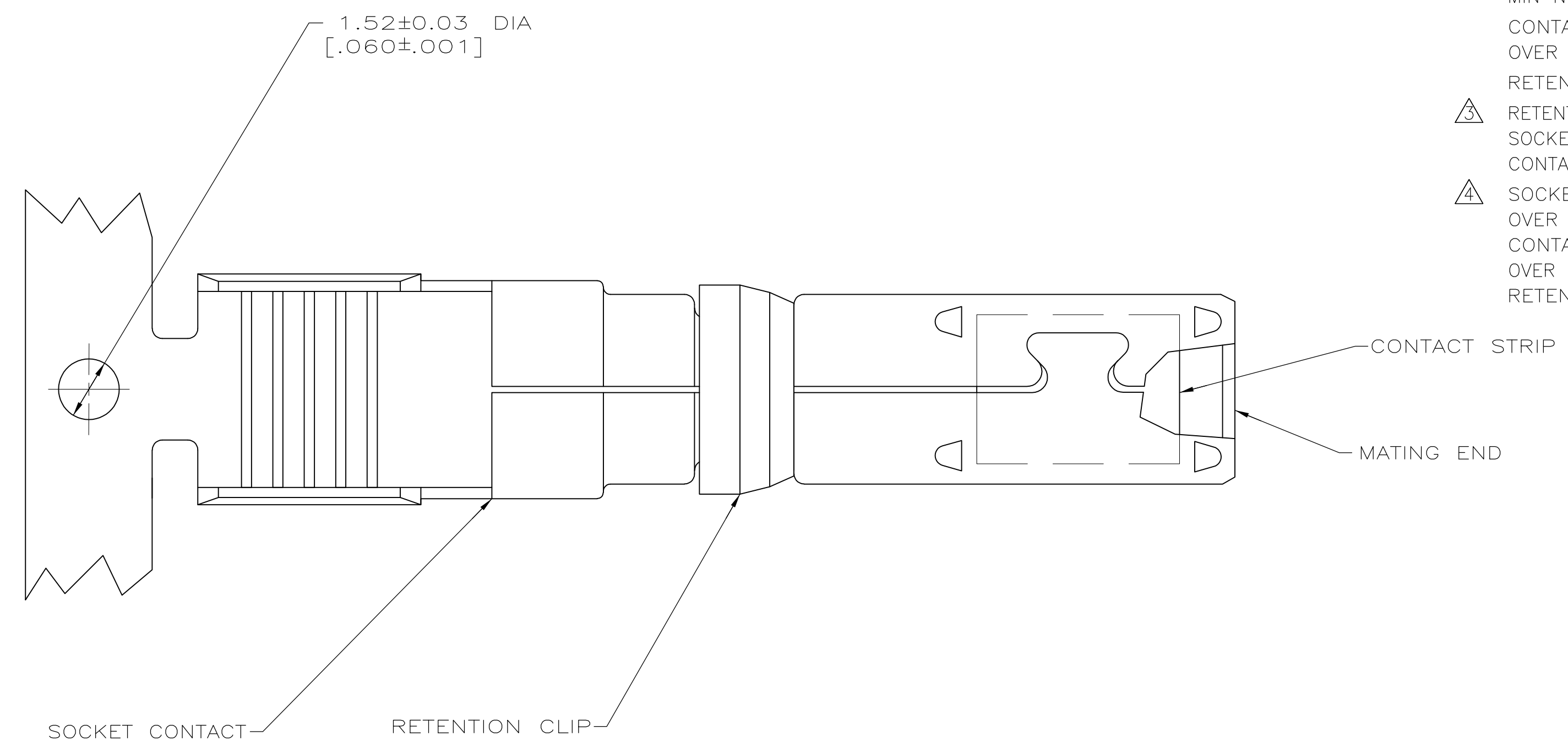


LOC		DIST		REVISIONS			
P	LTR	DESCRIPTION	DATE	OWN	APPD	REV	REV
B1		REVISED PER ECO-11-004917	11MAR11	RK	HMR		

- ⚠ WIRE SIZE AND AMP LOGO APPEAR ON OUTSIDE OF WIRE BARREL.
- ⚠ SOCKET CONTACT: 0.38 $\mu$ m [.000015] MIN GOLD PER MIL-G-45204 ON CONTACT MATING END, GOLD FLASH ON REMAINDER, ALL OVER 1.27 $\mu$ m [.000050] MIN NICKEL PER QQ-N-390.
- CONTACT STRIP: 0.76 $\mu$ m [.000030] MIN GOLD PER MIL-G-45204 OVER 1.02 $\mu$ m [.000040] MIN NICKEL PER QQ-N-390.
- RETENTION CLIP: 2.54 $\mu$ m [.000100] MIN NICKEL PER QQ-N-290.
- ⚠ RETENTION CLIP: PHOSPHOR BRONZE PER QQ-B-750.
- SOCKET CONTACT: COPPER PER QQ-C-576.
- CONTACT STRIP: BERYLLIUM COPPER PER QQ-C-533.
- ⚠ SOCKET CONTACT: 1.27 $\mu$ m [.000050] MIN SILVER PER QQ-S-365, ALL OVER 1.27 $\mu$ m [.000050] MIN NICKEL PER QQ-N-290.
- CONTACT STRIP: 5.08 $\mu$ m [.000200] MIN SILVER PER QQ-S-365, ALL OVER 1.02 $\mu$ m [.000040] MIN NICKEL PER QQ-N-290.
- RETENTION CLIP: 2.54 $\mu$ m [.000100] MIN NICKEL PER QQ-N-290.



2	DETAIL X	213843-4
4	DETAIL X	213843-3
2	-	213843-2
4	-	213843-1
FINISH	LOOSE PIECE	PART NUMBER

THIS DRAWING IS A CONTROLLED DOCUMENT.

DIMENSIONS:	MM(INCHES)	TOLERANCES UNLESS OTHERWISE SPECIFIED:	0 PLC ± -	1 PLC ± -	2 PLC ± -	3 PLC ± -	4 PLC ± -	ANGLES ± -
MATERIAL	FINISH	SEE TABLE	CUSTOMER DRAWING					

OWN	C. OBERMAN	21 MAR 96	APVD	G. STEINHAUER	26 MAR 96	NAME	SOCKET CONTACT ASSEMBLY, 8-10 AWG, POWERBAND, METRIMATE	
CHK	R. STONE	25 MAR 96	PRODUCT SPEC	-				
SIZE	CAGE CODE	DRAWING NO	WEIGHT	-				
A1	00779	213843	SCALE	10:1	SHEET	1	OF	1

**STE** TE Connectivity