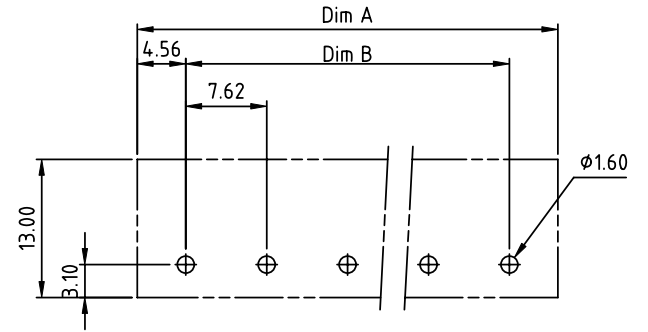
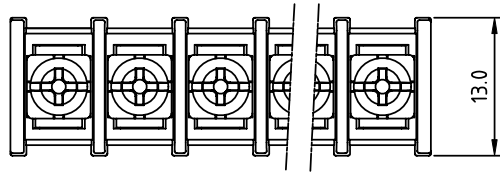
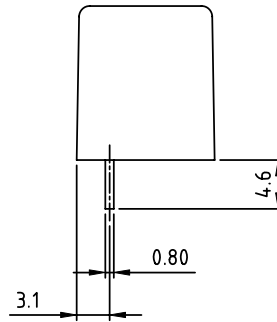
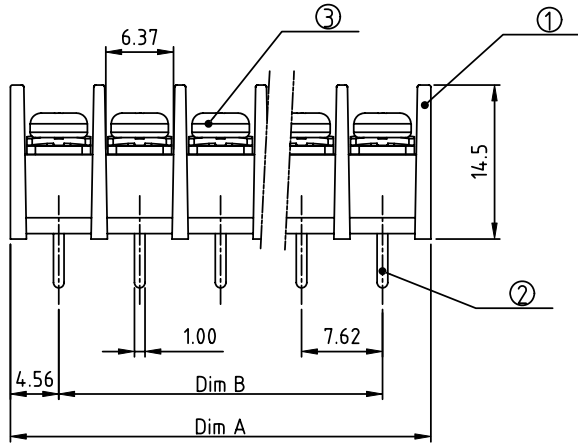


PRODUCT NUMBER	PITCH
YK312xx0x0J0G	7.62 mm



RECOMMENDED P.C.B LAYOUT
TOP VIEW



MATERIALS & ELECTRICAL
 RATED VOLTAGE & CURRENT: 250 V, 15 A
 WITHSTAND VOLTAGE: AC 2000 V/Min
 INSULATION RESISTANCE: 1000 M Ω OR MORE AT DC 500 V
 OPERATING TEMPERATURE RANG: -40 °C ~ +115 °C
 SCREW TORQUE VALUE: 5.3 Lb-In.
 WIRE RANGE: 22 - 16 AWG
 1) HOUSING: THERMOPLASTIC, UL 94 V-0 BLACK
 2) TERMINAL: BRASS, 0.8t
 3) TERMINAL SCREWS: STEEL, M3
 APPROVAL:

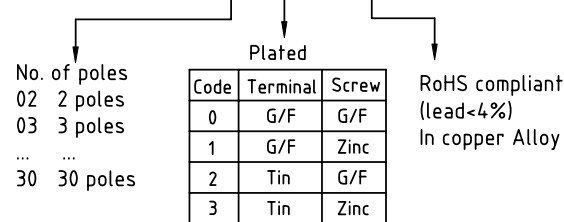
DIMENSION

Dim A	N \times 7.62 \pm 15
Dim B	(N-1) \times 7.62

N=Number of poles

Poles	Tolerance
2p-5p	\pm 0.20
6p-10p	\pm 0.25
11p-16p	\pm 0.35
17p-24p	\pm 0.40
25p-30p	\pm 0.50

PART NO.: YK 312xx 0 x 0 J0G



mat'l. code		surface ASME Y14.5	tolerance ASME Y14.5	projection 	product family TERMINAL BLOCK
ltr	ecn no	dr	date	tolerances unless otherwise specified	title TERMINAL BLOCK
				angles ϕ X \pm 1°	BARRIER TYPE
				scale MM	dwg no YK312xx0x0J0G
				dr EVAN LU 061214	sheet 1 of 1 size A4
				enr EVAN LU 061214	type CUSTOMER Drawing
				chr HANKE FENG 061214	
				appd SHI JUN 061214	
sheet index	revision sheet	A	1		