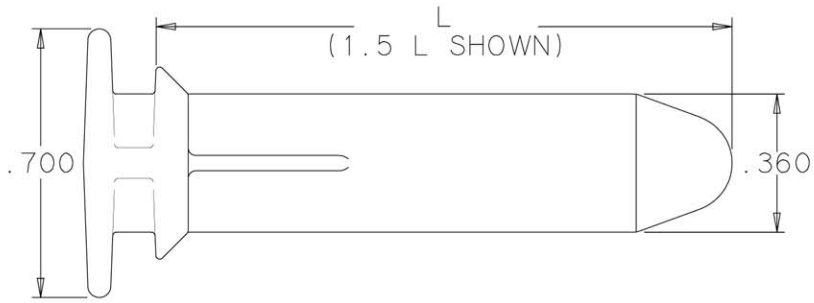


FULL SCALE



Δ	Δ		
CATALOG NUMBER	PACKAGE QUANTITY	DUCT WIDTH	(L) LENGTH
SLWR4-C	100	4.00	3.250
SLWR3-C	100	3.00	2.375
SLWR2-C	100	2.00	1.500

DESIGN TEAM _____ INVENTOR(S)/DATE _____

HellermannTyton

D		6/26/95	GGG
DWG REV	DASH - REV	CHANGED	RELEASED
	PART NO.	DATE	BY

FEATURES:
 - USE WITH 2, 3 & 4" WIDE TYTON SLOTTED DUCT
 - SNAPS IN PLACE

DIMENSIONS

VERIFIED _____ UNITS in mm mm in

name _____ date _____

TOLERANCES
 unless otherwise specified

.XXX = ± .005 | .X =
 .XX = ± .01 | <= ± 2°

MATERIAL

NYLON 6/6 BLACK
 or engineering approved equivalent

NAME

DATE _____

G GEIGER
 5/6/91

drawn _____

checked _____

approved _____

PART NAME

WIRE RETAINING CLIP
 (SLOTTED CHANNEL DUCT)

plot date 6/29/95 | scale 2X | drive S | sheet 1 of 1

FORMAT AH | VERSION E | CUSTOMER DRAWING NUMBER DT\CST\3002000

DRAWING NO. WAS DT3002C000