

4

3

2

1


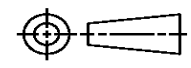
THIS DRAWING IS UNPUBLISHED. RELEASED FOR PUBLICATION
© COPYRIGHT ALL RIGHTS RESERVED.

LOC		DIST		REVISIONS			
P	LTR	DESCRIPTION		DATE	DWN	APVD	
	A1	ECR-16-001574		19FEB2016	RS	UG	

REPLACED BY OCEAN STYLE APPLICATOR PART NUMBER 2266139-1

FOR REPLACEMENT PARTS FOR APPLICATOR 1528931 REFER TO ADDITIONAL PAGE(S). SPARE PARTS KIT (IF LISTED) WILL REMAIN AVAILABLE.

THE REPLACEMENT OCEAN STYLE APPLICATOR HAS THE SAME TERMINATOR/PRESS INTERFACE AS APPLICATOR 1528931

THIS DRAWING IS A CONTROLLED DOCUMENT.		DWN R.SHEN	 TE Connectivity			
DIMENSIONS:		CHK LJ.ZHANG				
		APVD U.GUO	NAME FINE ADJUST SIDE FEED HDI APPLICATOR			
		PRODUCT SPEC	APPLICATION SPEC			
TOLERANCES UNLESS OTHERWISE SPECIFIED:		WEIGHT	SIZE A3	CAGE CODE	DRAWING NO C-1528931	RESTRICTED TO
0 PLC ± 1 PLC ± 2 PLC ± 3 PLC ± 4 PLC ± ANGLES ±		CUSTOMER DRAWING		SCALE	SHEET 1 OF 2	REV A1
MATERIAL		FINISH				

PART NUMBER	REV	TERMINATOR	FEED TYPE	DESCRIPTION
1528931-1	A	LEADMAKER	MECH POST FEED	CUTS CARRIER
1528931-2	A	BENCH	MECH PRE FEED	CUTS CARRIER
1528931-6	A	LEADMAKER	MECH POST FEED	CONTINUOUS CARRIER
7-1528931-1	A	LEADMAKER	MECH POST FEED	-1 AND SPARE PARTS
7-1528931-2	A	BENCH	MECH PRE FEED	-2 AND SPARE PARTS
7-1528931-6	A	LEADMAKER	MECH POST FEED	-6 AND SPARE PARTS
7-1528931-7	A	-	-	SPARE PARTS KIT

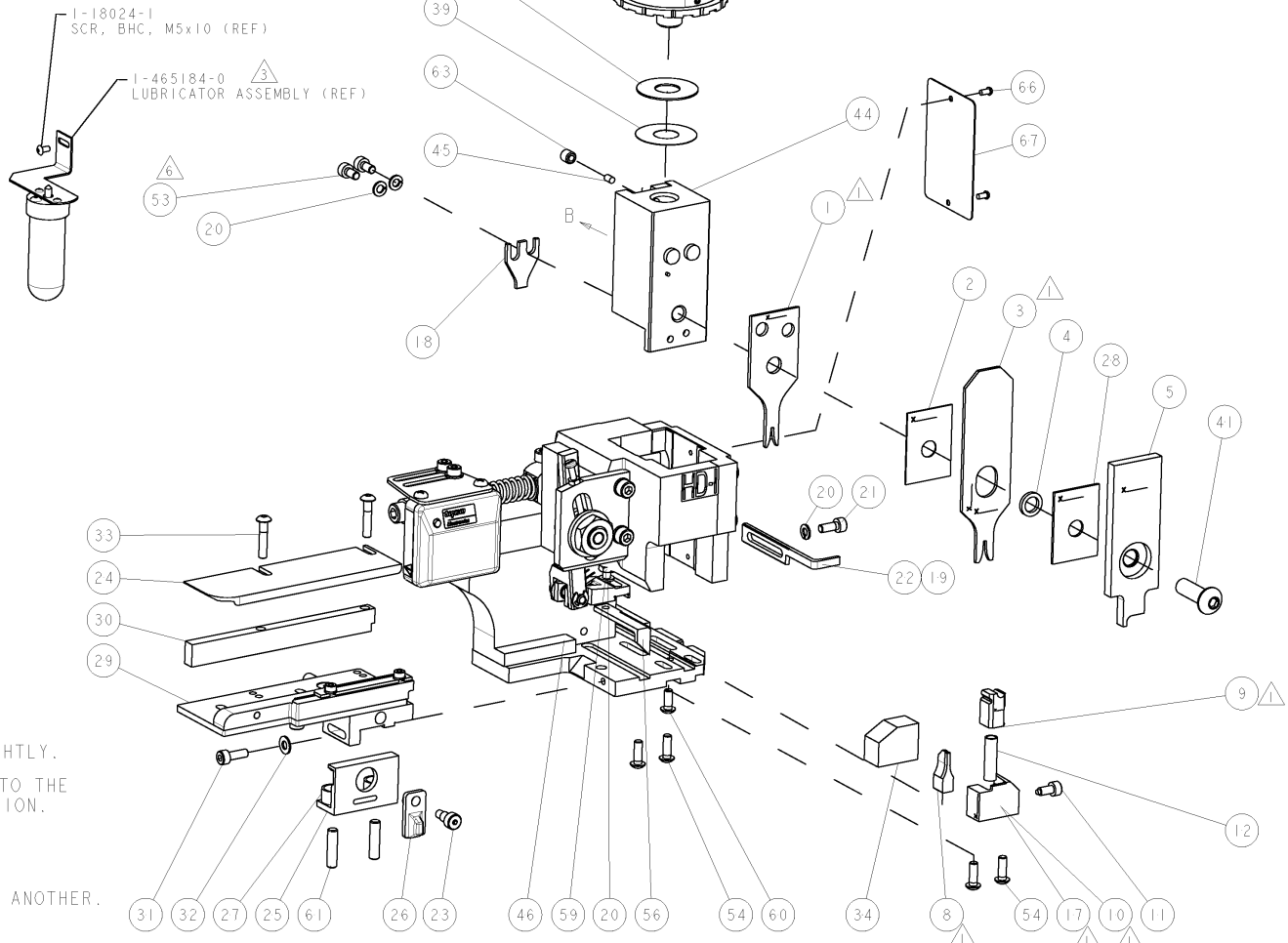
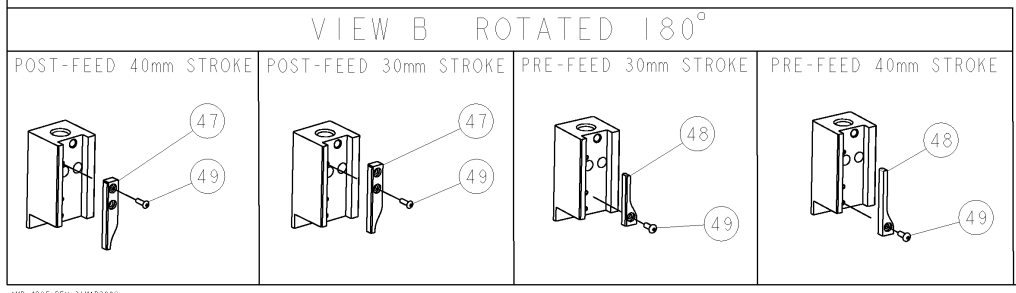
CRIMP	SIZE	TYPE	RANGE
WIRE	1.40 [0.055 IN]	F	26-22 AWG
INSUL	1.78 [0.070 IN]	F	1.20-1.75 [0.047-.069 IN]

WIRE STRIP LENGTH	APPL INSTRUCTIONS
3.00-3.50 [0.118-.138 IN]	408-8322 & 408-8490

TERMINAL	FEED
114-13172	8.60 [0.339 IN]

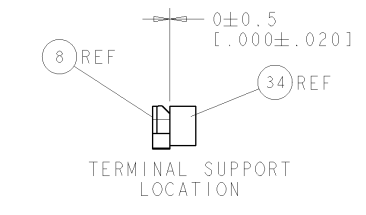
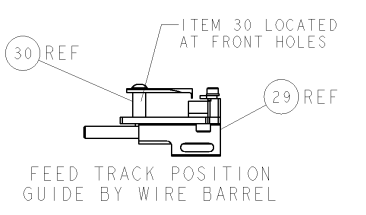
WIRE SIZE	CRIMP HEIGHT	REF SETTING
22 AWG	0.89 ±0.05 [0.035 ±.002 IN]	B 7
24 AWG	0.84 ±0.05 [0.033 ±.002 IN]	C 1
26 AWG	0.76 ±0.05 [0.030 ±.002 IN]	C 6

- △ RECOMMENDED SPARE PARTS.
- 2. GREASE RAM, CAM, CAM FOLLOWER AND FEED ROD LIGHTLY.
- △ CERTAIN TERMINALS REQUIRE LUBRICATION. REFER TO THE APPLICATOR INSTRUCTION SHEET FOR MORE INFORMATION.
- 4. LUBRICATE DAILY PER THE APPLICATOR INSTRUCTION SHEET SUPPLIED WITH THE APPLICATOR.
- △ ADJUST FEED WHEN CHANGING FROM ONE TERMINAL TO ANOTHER.
- △ CUT TO LENGTH AT ASSEMBLY.



* WARNING
ON INSTALLATION, SET WIRE DISC TO LARGEST WIRE SIZE SETTING. USE OF SETTINGS BELOW MIN. REQUIRED CRIMP HEIGHT SETTING WILL CAUSE DAMAGE TO CRIMP TOOLING.

PART NO	DESCRIPTION	ITEM NO
-	-	83
-	-	82
-	-	81
-	-	80
-	-	79
-	-	78
-	-	77
-	-	76
-	-	75
-	-	74
-	-	73
-	-	72
-	-	71
-	-	70
-	-	69
-	-	68
-	-	67
-	-	66
-	-	65
-	-	64
-	-	63
-	-	62
-	-	61
-	-	60
-	-	59
-	-	58
-	-	57
-	-	56
-	-	55
-	-	54
-	-	53
-	-	52
-	-	51
-	-	50
-	-	49
-	-	48
-	-	47
-	-	46
-	-	45
-	-	44
-	-	43
-	-	42
-	-	41
-	-	40
-	-	39
-	-	38
-	-	37
-	-	36
-	-	35
-	-	34
-	-	33
-	-	32
-	-	31
-	-	30
-	-	29
-	-	28
-	-	27
-	-	26
-	-	25
-	-	24
-	-	23
-	-	22
-	-	21
-	-	20
-	-	19
-	-	18
-	-	17
-	-	16
-	-	15
-	-	14
-	-	13
-	-	12
-	-	11
-	-	10
-	-	9
-	-	8
-	-	7
-	-	6
-	-	5
-	-	4
-	-	3
-	-	2
-	-	1



SET UP GAGE
458637-3

REV	DESCRIPTION	DATE	DWG	APPD
A	RELEASE FOR PRODUCTION	14OCT2008	LJL	MC

REV	DESCRIPTION	DATE	DWG	APPD
-	-	-	-	73
-	-	-	-	72
-	-	-	-	71
-	-	-	-	70
-	-	-	-	69
-	-	-	-	68
-	-	-	-	67
-	-	-	-	66
-	-	-	-	65
-	-	-	-	64
-	-	-	-	63
-	-	-	-	62
-	-	-	-	61
-	-	-	-	60
-	-	-	-	59
-	-	-	-	58
-	-	-	-	57
-	-	-	-	56
-	-	-	-	55
-	-	-	-	54
-	-	-	-	53
-	-	-	-	52
-	-	-	-	51
-	-	-	-	50
-	-	-	-	49
-	-	-	-	48
-	-	-	-	47
-	-	-	-	46
-	-	-	-	45
-	-	-	-	44
-	-	-	-	43
-	-	-	-	42
-	-	-	-	41
-	-	-	-	40
-	-	-	-	39
-	-	-	-	38
-	-	-	-	37
-	-	-	-	36
-	-	-	-	35
-	-	-	-	34
-	-	-	-	33
-	-	-	-	32
-	-	-	-	31
-	-	-	-	30
-	-	-	-	29
-	-	-	-	28
-	-	-	-	27
-	-	-	-	26
-	-	-	-	25
-	-	-	-	24
-	-	-	-	23
-	-	-	-	22
-	-	-	-	21
-	-	-	-	20
-	-	-	-	19
-	-	-	-	18
-	-	-	-	17
-	-	-	-	16
-	-	-	-	15
-	-	-	-	14
-	-	-	-	13
-	-	-	-	12
-	-	-	-	11
-	-	-	-	10
-	-	-	-	9
-	-	-	-	8
-	-	-	-	7
-	-	-	-	6
-	-	-	-	5
-	-	-	-	4
-	-	-	-	3
-	-	-	-	2
-	-	-	-	1

REV	DESCRIPTION	DATE	DWG	APPD
A	RELEASE FOR PRODUCTION	14OCT2008	LJL	MC

16OCT2008	LOFTHOUSE	Tyco Electronics	Harrisburg, PA 17105-3608
APPR	M. CLIFFORD	FINE ADJUST SIDE FEED HDI APPLICATOR	
APPLICATION SPEC	See Table	SIZE	A
HEIGHT		CASE CODE	00779
CUSTOMER DRAWING		DRAWING NO	1528931
		RESTRICTED TO	
		SCALE	3:5
		SHEET	2 OF 2
		REV	A