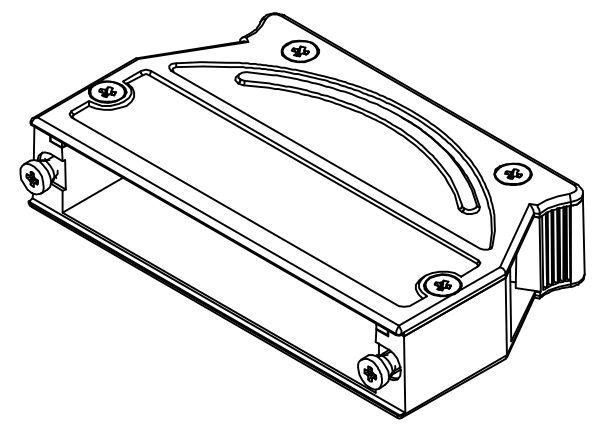
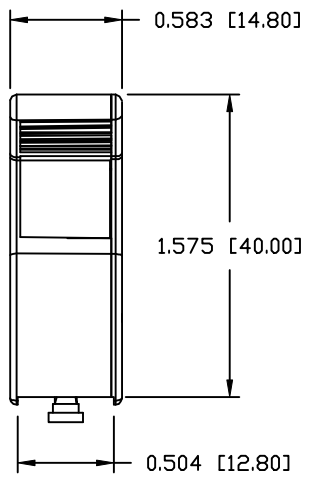
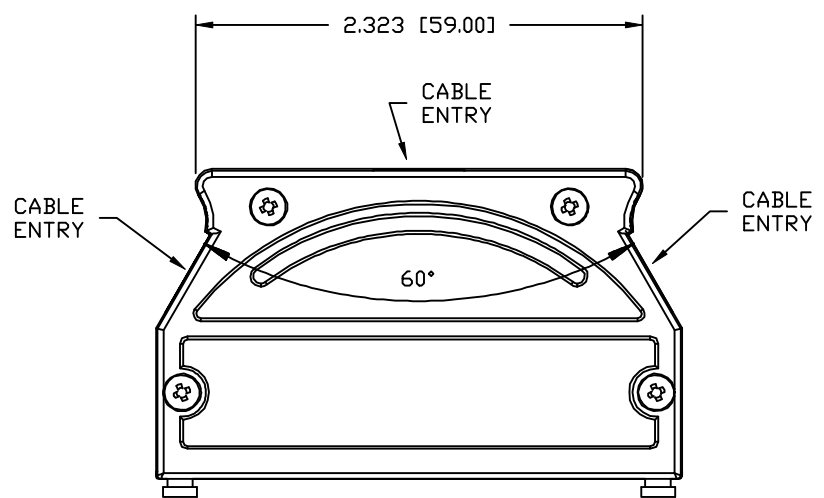


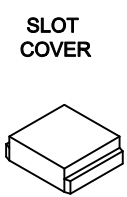
CABLE DIAMETER
0.551 [14.00] MAX

MATERIAL:

- BACKSHELL: ZINC ALLOY
- COVER: ZINC ALLOY
- MOUNTING SCREWS: STEEL, NICKEL PLATED
- HOUSING SCREWS: STEEL, ZINC PLATED
- GROUNDING SCREW: STEEL, ZINC PLATED
- CABLE SLOT COVER: ZINC ALLOY
- OPERATING TEMP: -40°C TO +90°C



- BACKSHELL KIT INCLUDES:**
- (1) BACKSHELL
 - (1) BACKSHELL COVER
 - (2) MOUNTING SCREWS
 - (4) HOUSING SCREWS
 - (1) GROUNDING SCREW
 - (2) CABLE SLOT COVER



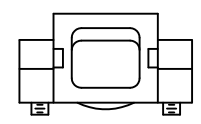
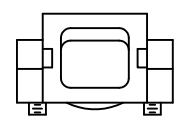
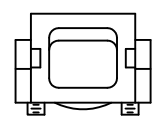
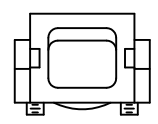
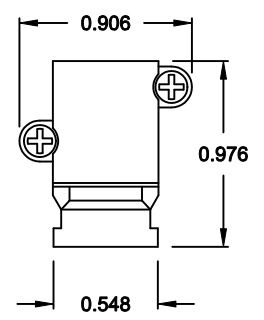
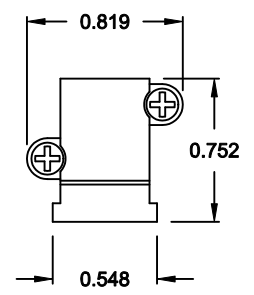
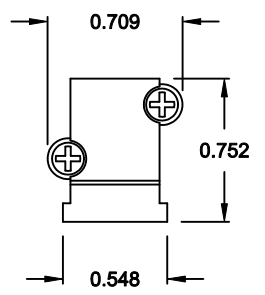
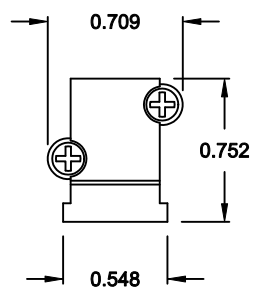
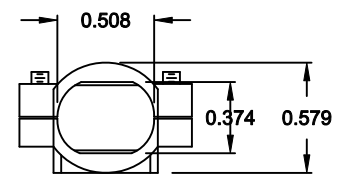
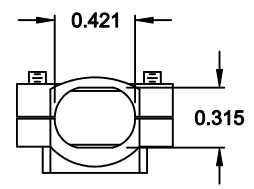
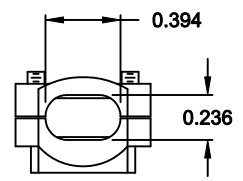
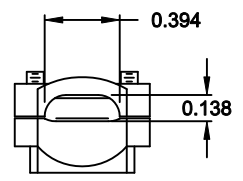
**SEE PAGE 2 FOR CABLE CLAMPS

DO NOT SCALE FROM DRAWING

	THESE DRAWINGS AND SPECIFICATIONS ARE THE PROPERTY OF NorComp AND SHALL NOT BE REPRODUCED, COPIED OR USED AS THE BASIS FOR THE MANUFACTURE OF SALE OF APPARATUS WITHOUT WRITTEN PERMISSION.		DRAWN: M. SIGMON	DATE: 08-16-16
			CHECKED:	DATE:
<h1>NorComp</h1>	SCALE: N.T.S.	SHEET 1 OF 2	REV 0	
	DWG NO.		975M037-030R121	

RoHS COMPLIANT

CABLE CLAMPS ORDERED SEPARATELY



P/N 955-09-SR-4-7
CABLE RANGE = 0.157 - 0.276

P/N 955-15-SR-7-10
CABLE RANGE = 0.276 - 0.394

P/N 955-25-SR-9-12
CABLE RANGE = 0.354 - 0.472

P/N 955-37-SR-11-14
CABLE RANGE = 0.433 - 0.551

DO NOT SCALE FROM DRAWING



THESE DRAWINGS AND SPECIFICATIONS ARE THE PROPERTY OF NorComp AND SHALL NOT BE REPRODUCED, COPIED OR USED AS THE BASIS FOR THE MANUFACTURE OF SALE OF APPARATUS WITHOUT WRITTEN PERMISSION.

DRAWN: M. SIGMON		DATE: 08-16-16	
CHECKED:		DATE:	
SCALE: N.T.S.	SHEET 2	OF 2	REV 0
DWG NO. 975M037-030R121			

RoHS COMPLIANT

NorComp