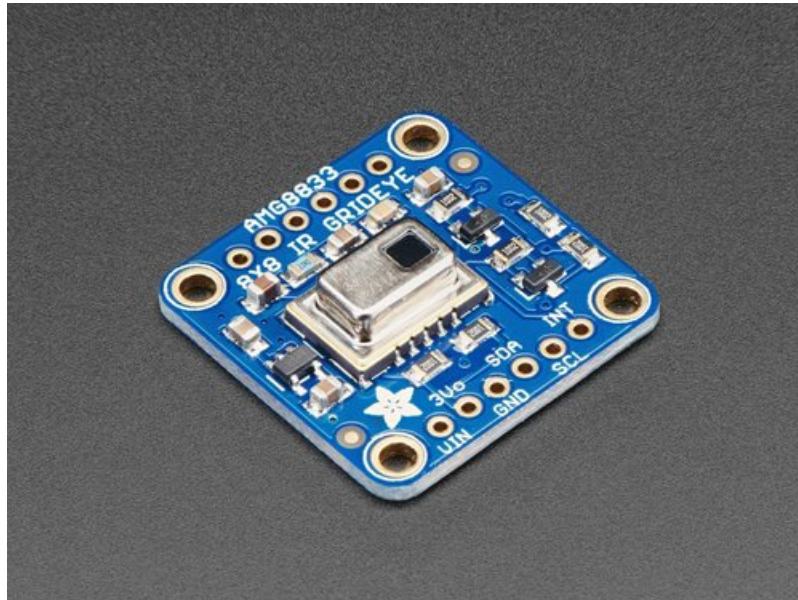




Adafruit AMG8833 8x8 Thermal Camera Sensor

Created by Dean Miller

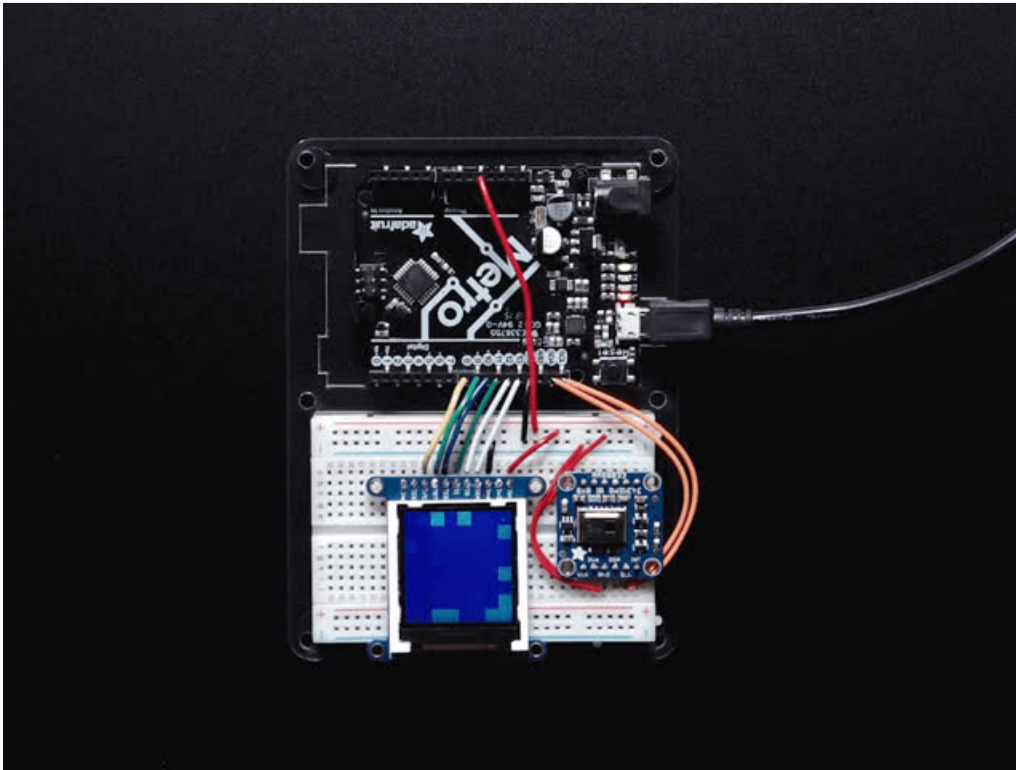


Last updated on 2018-08-16 04:51:18 PM UTC

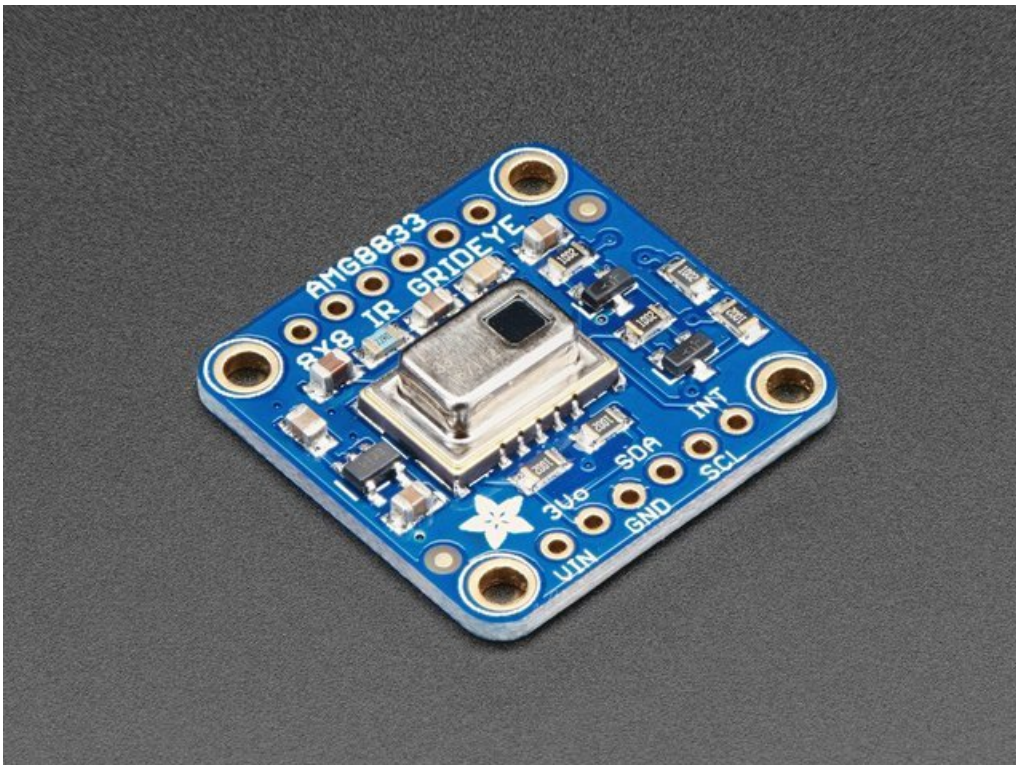
Guide Contents

Guide Contents	2
Overview	3
Pinouts	6
Power Pins:	6
Logic pins:	6
Assembly	8
Prepare the header strips:	8
Add the breakout board:	9
And Solder!	10
Arduino Wiring & Test	12
I2C Wiring	12
Download Adafruit_AMG88xx library	12
Load Thermistor Test	13
Pixel Array Output	14
Library Reference	15
Arduino Library Docs	16
Arduino Thermal Camera	17
Adafruit 1.44" Color TFT LCD Display with MicroSD Card breakout	17
Python & CircuitPython	19
CircuitPython Microcontroller Wiring	19
Python Computer Wiring	19
CircuitPython Installation of AMG88xx Library	19
Python Installation of AMG88xx Library	20
CircuitPython & Python Usage	20
Full Example Code	21
Python Docs	22
Raspberry Pi Thermal Camera	23
Raspberry Pi 3 - Model B - ARMv8 with 1G RAM	23
PiTFT Plus Assembled 320x240 2.8" TFT + Resistive Touchscreen	24
Assembled Pi T-Cobbler Plus - GPIO Breakout	24
Setup PiTFT	24
Install Python Software	24
Wiring Up Sensor	24
Run example code	26
Downloads	29
Documents	29
Schematic	29
Dimensions	29

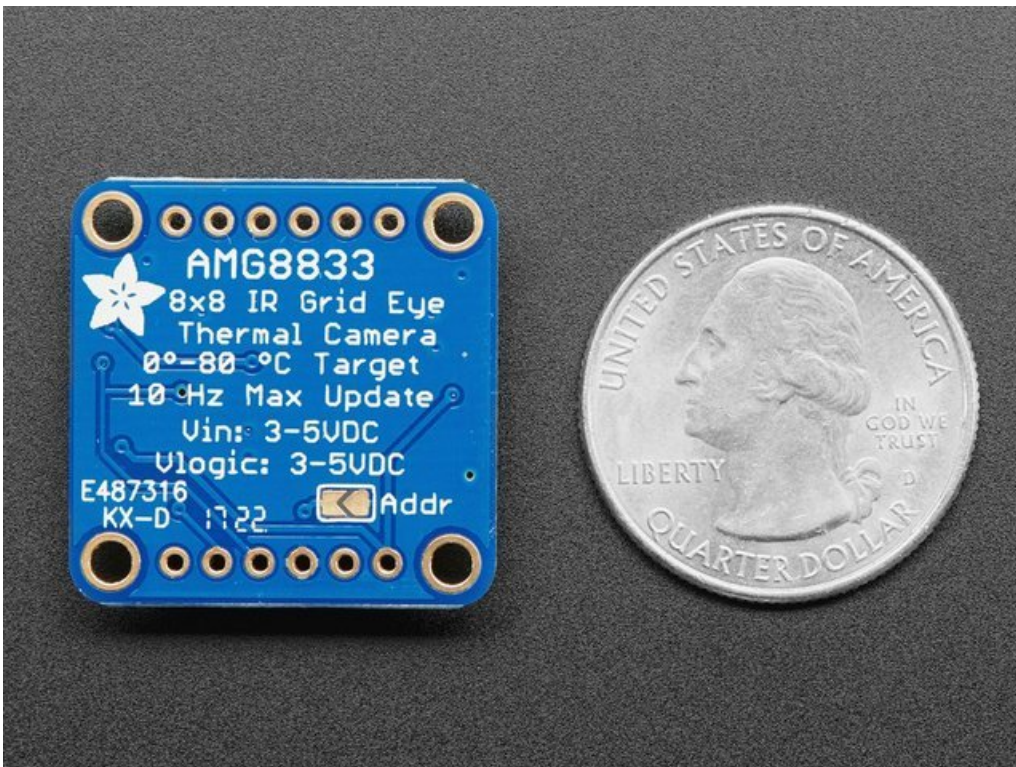
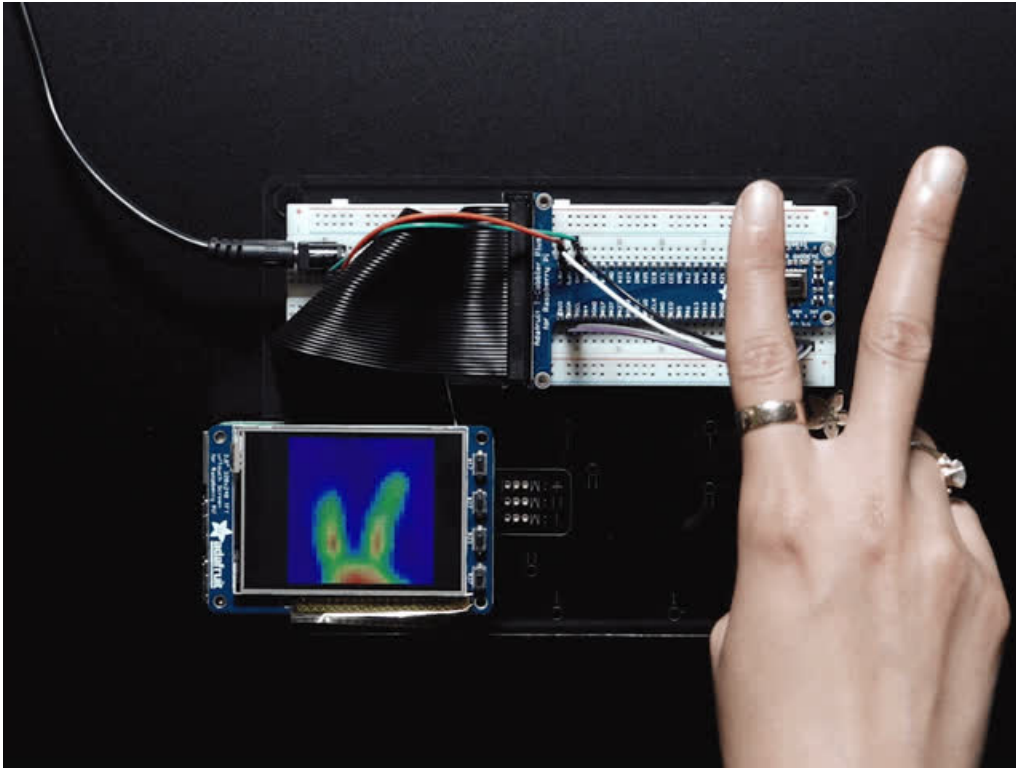
Overview



Add heat-vision to your project and with an Adafruit AMG8833 Grid-EYE Breakout! This sensor from Panasonic is an 8x8 array of IR thermal sensors. When connected to your microcontroller (or raspberry Pi) it will return an array of 64 individual infrared temperature readings over I2C. It's like those fancy thermal cameras, but compact and simple enough for easy integration.

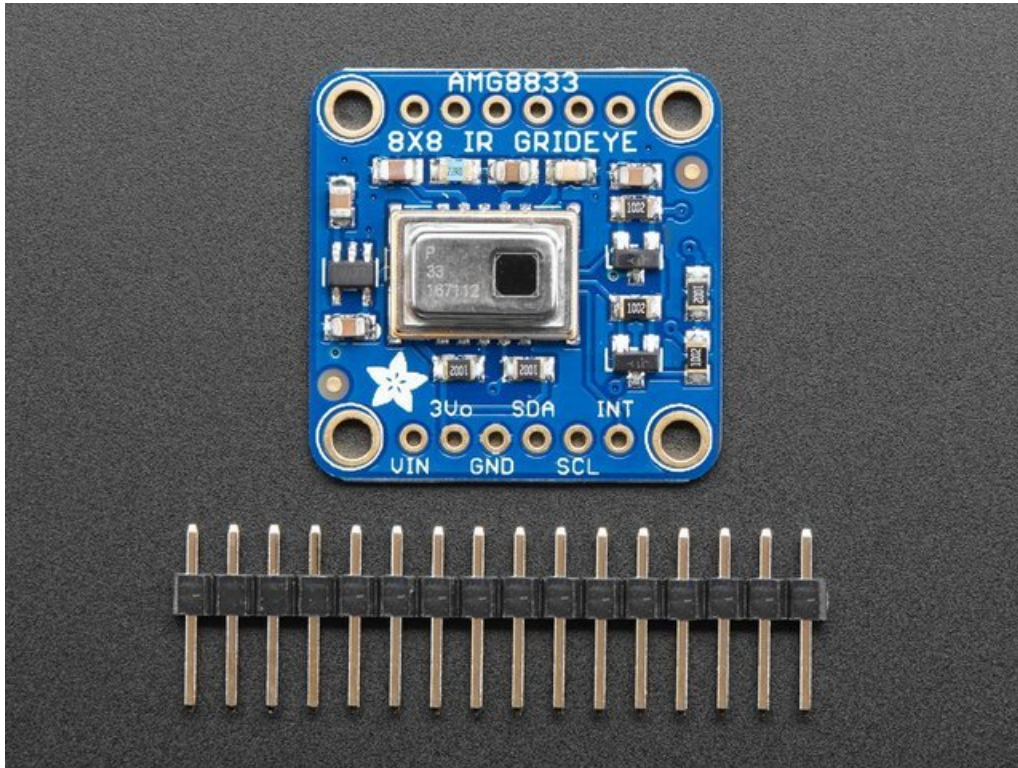


This part will measure temperatures ranging from **0°C to 80°C (32°F to 176°F)** with an accuracy of $\pm 2.5^{\circ}\text{C}$ (4.5°F). It can detect a human from a distance of up to 7 meters (23) feet. With a maximum frame rate of 10Hz, It's perfect for creating your own human detector or mini thermal camera. We have code for using this breakout on an Arduino or compatible (the sensor communicates over I2C) or on a Raspberry Pi with Python. On the Pi, with a bit of image processing help from the SciPy python library we were able to interpolate the 8x8 grid and get some pretty nice results!

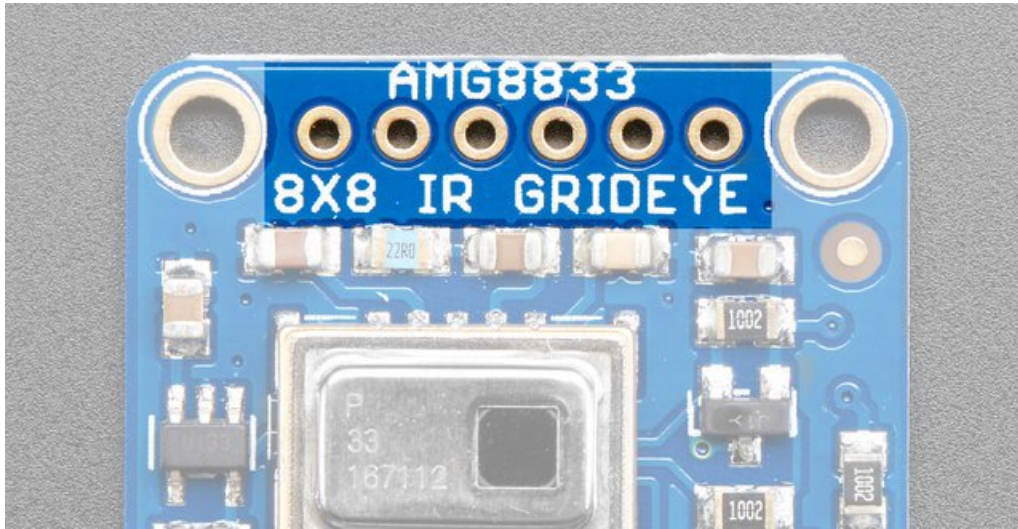


The AMG8833 is the next generation of 8x8 thermal IR sensors from Panasonic, and offers higher performance than its predecessor the AMG8831. The sensor only supports I2C, and has a configurable interrupt pin that can fire when any individual pixel goes above or below a threshold that you set.

To make it easy to use, we pick & placed it on a breakout board with a 3.3V regulator and level shifting. So you can use it with any 3V or 5V microcontroller or computer.

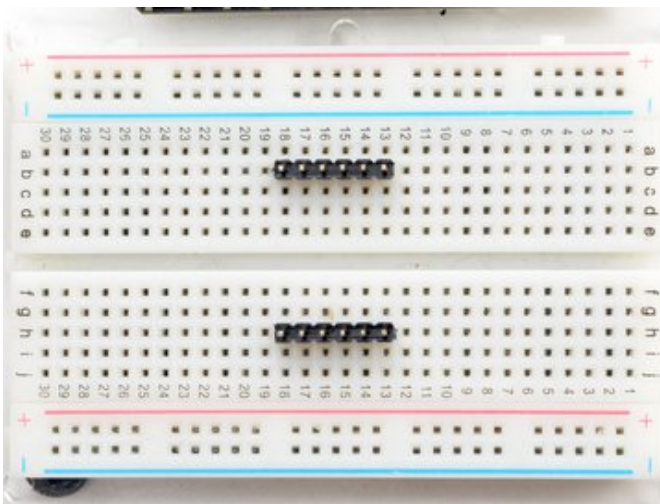
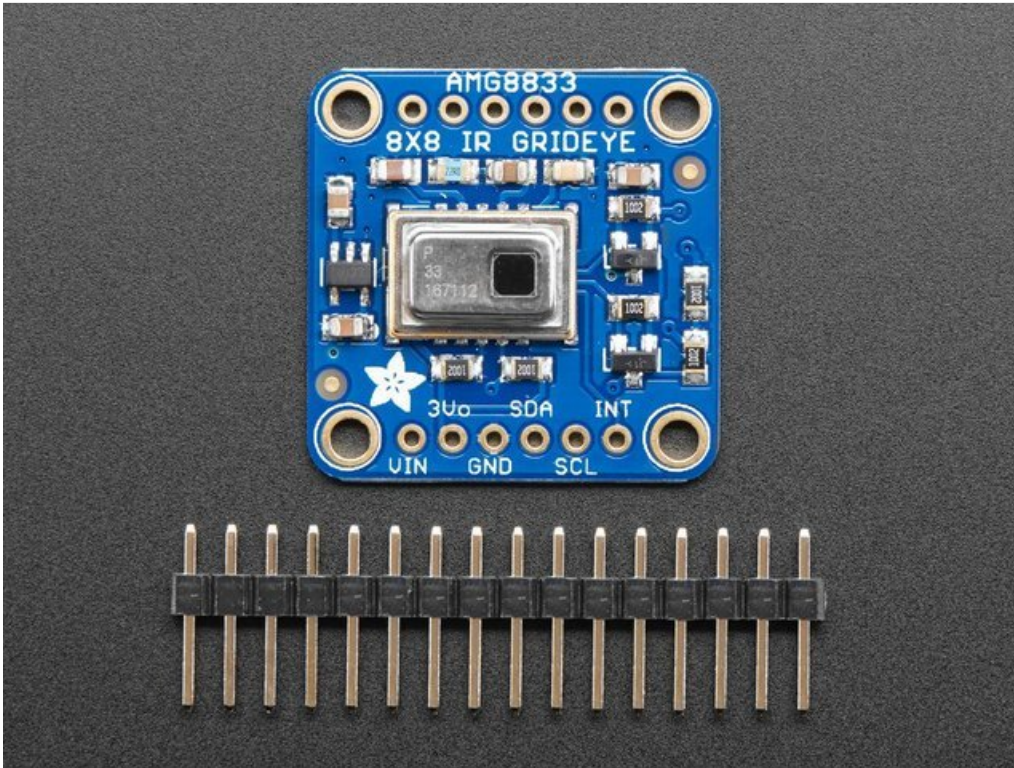


Even better - We've done all the hard work here, with example code and supporting software libraries to get you up in running in just a few lines of code!



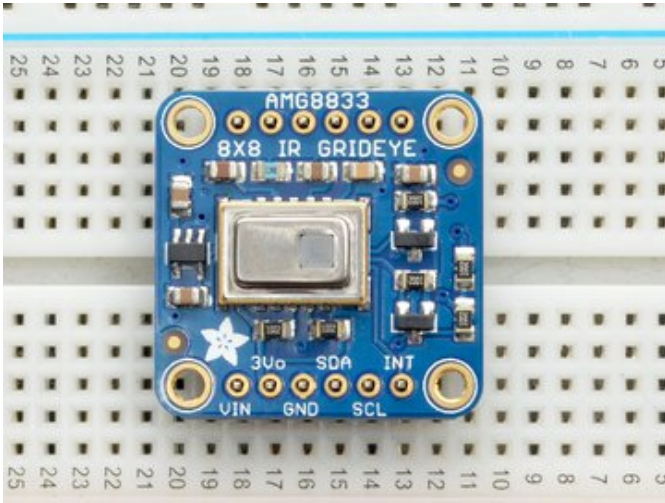
The 6 holes at the top of the board are provided for stability and are not connected to anything. Use these if you want your sensor to sit nice and flat on a breadboard or Perma-Proto.

Assembly



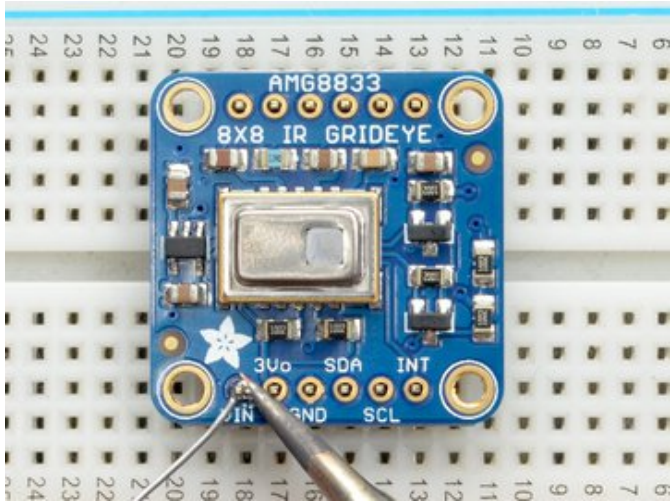
Prepare the header strips:

Cut the strips to length if necessary. It will be easier to solder if you insert it into a breadboard - **long pins down**



Add the breakout board:

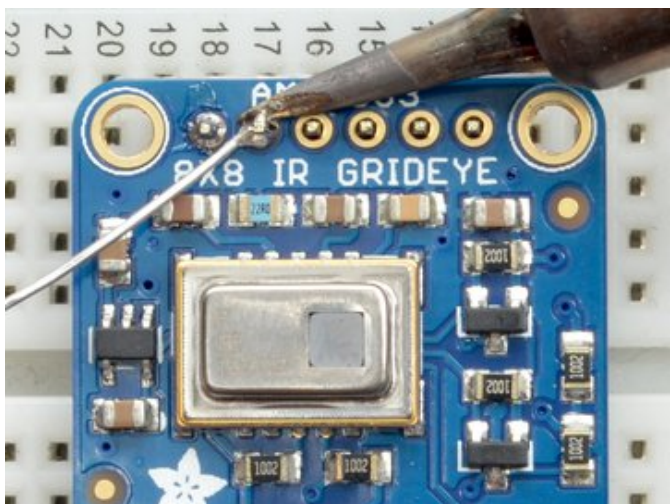
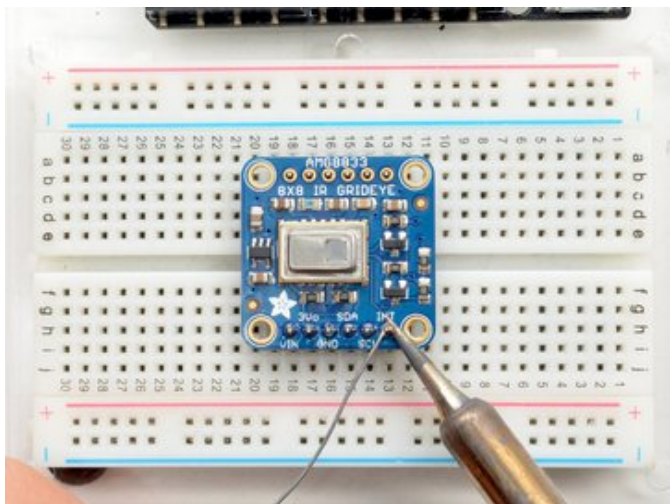
Place the breakout board over the pins so that the short pins poke through the breakout pads



And Solder!

Be sure to solder all pins for reliable electrical contact.

(For tips on soldering, be sure to check out our [Guide to Excellent Soldering](https://adafruit.it/aTk) (<https://adafruit.it/aTk>)).





You're done! Check your solder joints visually and continue onto the next steps

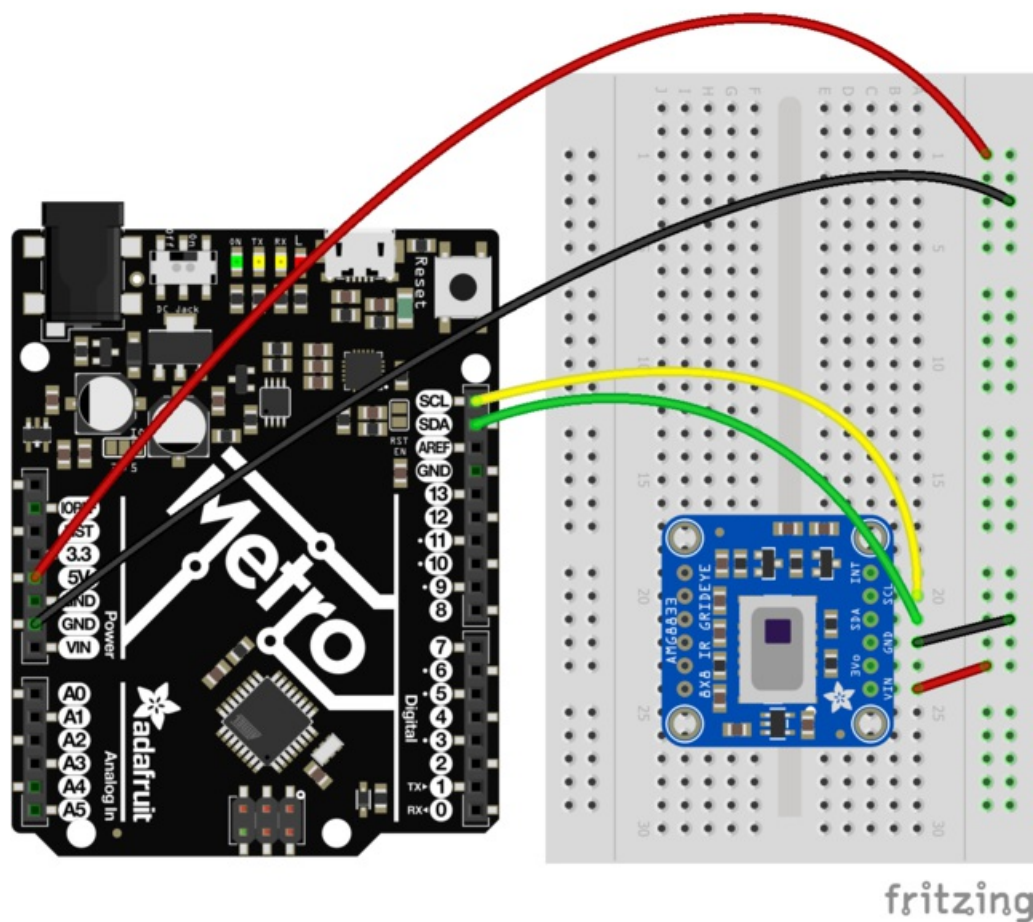
Arduino Wiring & Test

You can easily wire this breakout to any microcontroller, we'll be using an Arduino. You can use any other kind of microcontroller as well as long as it has I2C clock and I2C data lines.

I2C Wiring

- Connect **Vin** to the power supply, 3-5V is fine. Use the same voltage that the microcontroller logic is based off of. For most Arduinos, that is 5V
- Connect **GND** to common power/data ground
- Connect the **SCL** pin to the I2C clock **SCL** pin on your Arduino.
On an UNO & '328 based Arduino, this is also known as **A5**, on a Mega it is also known as **digital 21** and on a Leonardo/Micro, **digital 3**
- Connect the **SDA** pin to the I2C data **SDA** pin on your Arduino.
On an UNO & '328 based Arduino, this is also known as **A4**, on a Mega it is also known as **digital 20** and on a Leonardo/Micro, **digital 2**

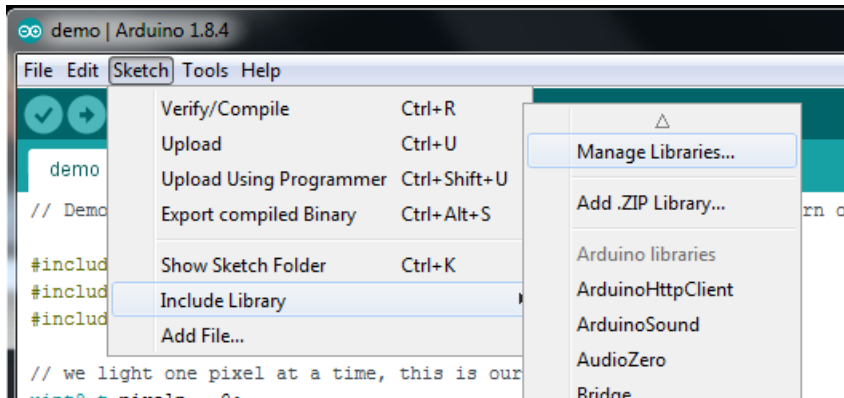
By default, the I2C address is 0x69. If you solder the jumper on the back of the board labeled "Addr", the address will change to 0x68.



[Download Adafruit_AMG88xx library](#)

To begin reading sensor data, you will need to install the `Adafruit_AMG88xx` library (<https://adafru.it/xfw>).

Start up the IDE and open the Library Manager:



Type in `AMG88xx` until you see the Adafruit Library pop up. Click Install!

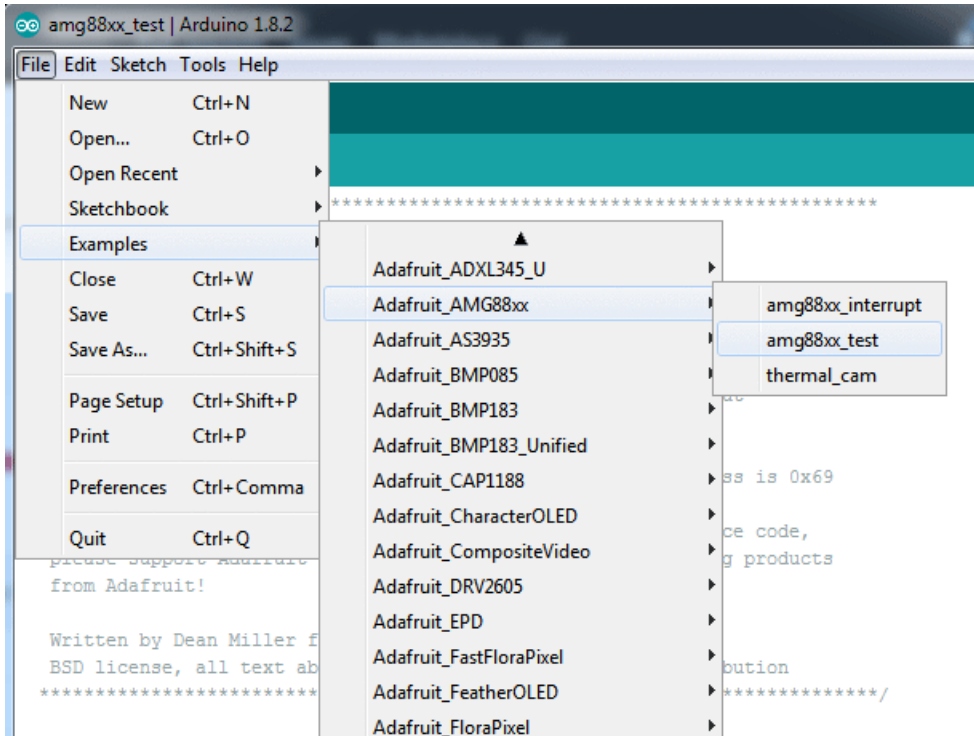


We also have a great tutorial on Arduino library installation at:

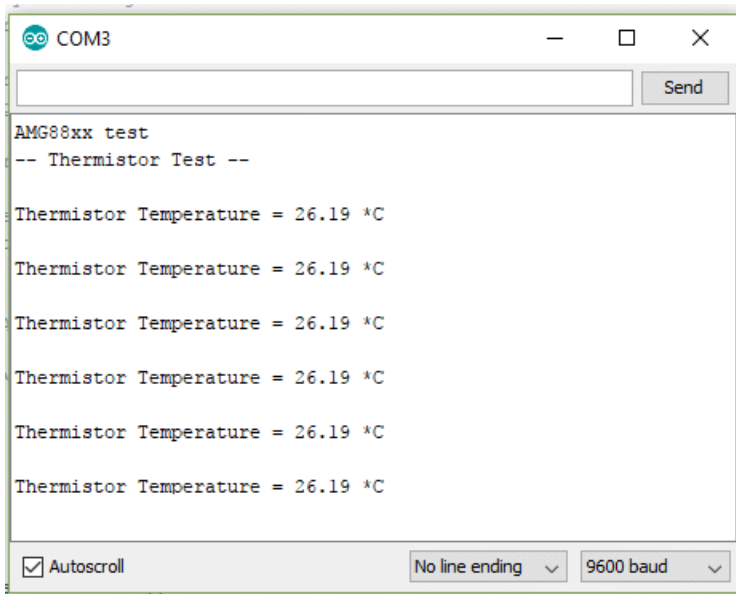
<http://learn.adafruit.com/adafruit-all-about-arduino-libraries-install-use> (<https://adafru.it/aYM>)

Load Thermistor Test

Open up `File->Examples->Adafruit_AMG88xx->amg88xx_test` and upload to your Arduino wired up to the sensor. This example just connects to the sensor and reads the internal thermistor to test your connections.



Once uploaded to your Arduino, open up the serial console at 9600 baud speed to see the internal thermistor reading. If you get a reading of ~26° degrees (room temperature) then everything is wired and working correctly!

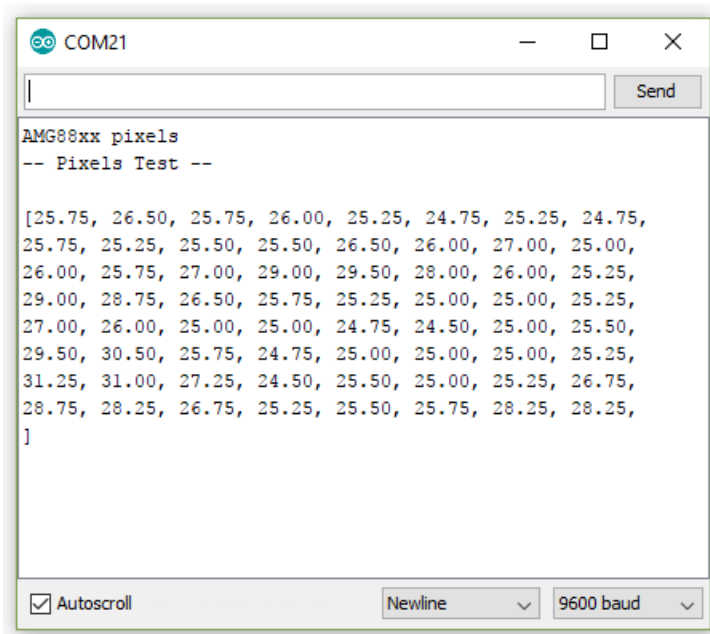


Pixel Array Output

OK now that we know the sensor is working, let's read actual thermal data. Load up **File -> Examples -> Adafruit_AMG88 -> pixels_test**

Upload the code, and open the serial console at 9600 baud rate. You should see a printout of the array of readings every second. Each number is the detected temperature in Celsius, and in the 8x8 grid order that comes from the sensor

The numbers should increase if you put your hand or face above the sensor. They'll decrease if you hold up something cold in front of the sensor eye



```
COM21
[
AMG88xx pixels
-- Pixels Test --

[25.75, 26.50, 25.75, 26.00, 25.25, 24.75, 25.25, 24.75,
25.75, 25.25, 25.50, 25.50, 26.50, 26.00, 27.00, 25.00,
26.00, 25.75, 27.00, 29.00, 29.50, 28.00, 26.00, 25.25,
29.00, 28.75, 26.50, 25.75, 25.25, 25.00, 25.00, 25.25,
27.00, 26.00, 25.00, 25.00, 24.75, 24.50, 25.00, 25.50,
29.50, 30.50, 25.75, 24.75, 25.00, 25.00, 25.00, 25.25,
31.25, 31.00, 27.25, 24.50, 25.50, 25.00, 25.25, 26.75,
28.75, 28.25, 26.75, 25.25, 25.50, 25.75, 28.25, 28.25,
]

Autoscroll Newline 9600 baud
```

Library Reference

To create the object, use

```
Adafruit_AMG88xx amg;
```

Initialize the sensor using

```
status = amg.begin();
if (!status) {
  Serial.println("Could not find a valid AMG88xx sensor, check wiring!");
  while (1);
}
```

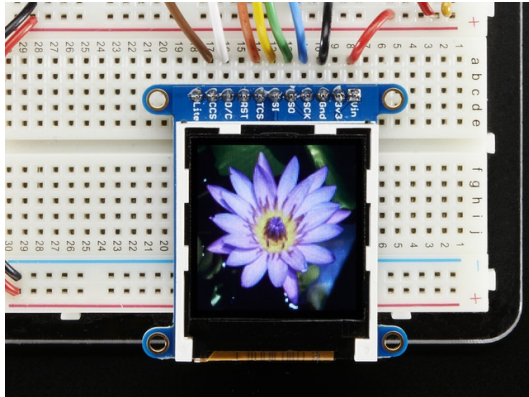
to read the pixels you will need an array to place the readings into. Once you have one, you can call `readPixels`. Make sure the array you create is big enough by using the pre-defined `AMG88xx_PIXEL_ARRAY_SIZE` macro.

```
float pixels[AMG88xx_PIXEL_ARRAY_SIZE];
amg.readPixels(pixels);
```


Arduino Thermal Camera

To make your Arduino into a cool thermal camera, we can add a small display.

In this example we use an Adafruit 1.44" Color TFT. With some code changes, you can use other size displays but a color display is best of course.

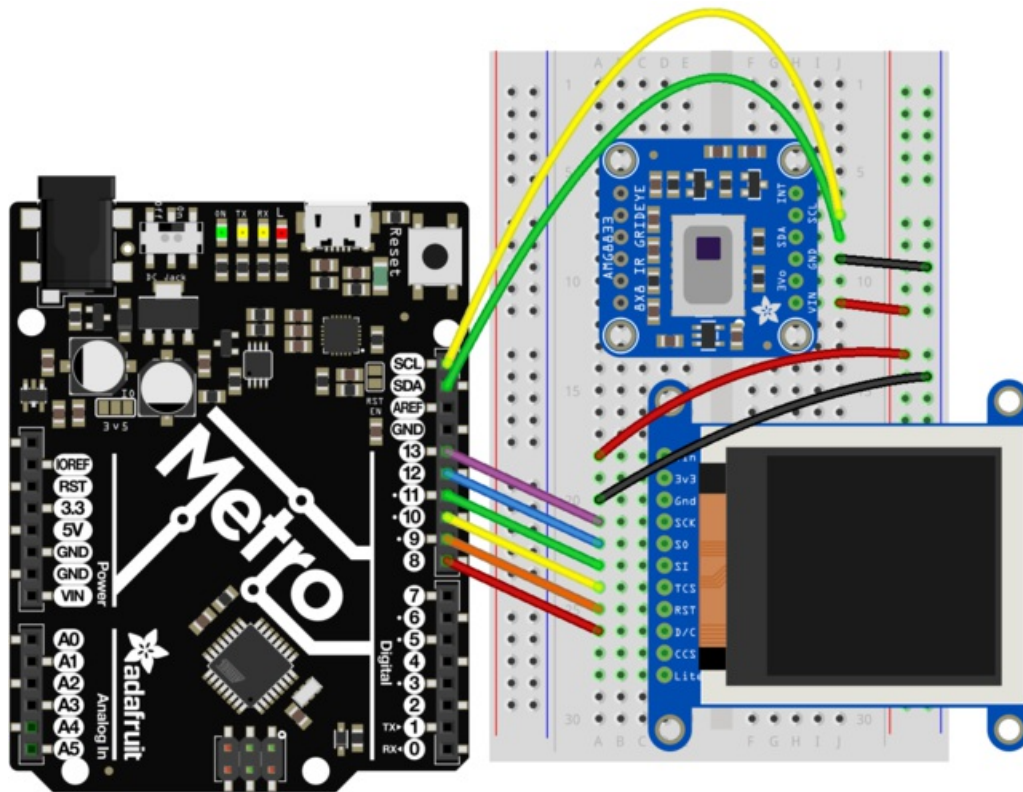


Adafruit 1.44" Color TFT LCD Display with MicroSD Card breakout

\$14.95
IN STOCK

ADD TO CART

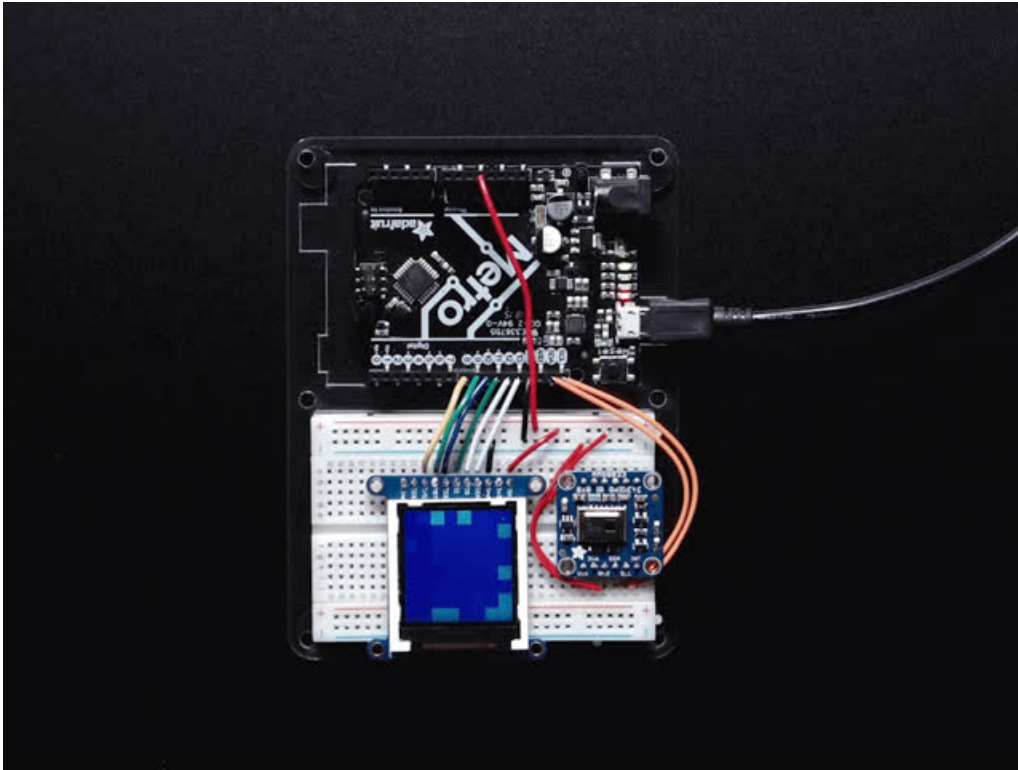
Keep your AMG8833 breakout wired as you already have it from the Wiring & Test section above, and add your TFT like this



fritzing

Once everything is all wired up, load up `File->Examples->Adafruit_AMG88xx->thermal_cam`

Hit upload and you should have a simple thermal camera!



James DV has also sent over a version that is optimized if you want a faster display-update rate(<https://adafru.it/BPj>)

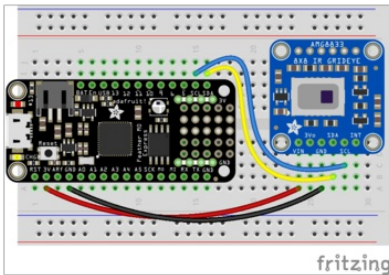
Python & CircuitPython

It's easy to use the AMG8833 sensor with Python or CircuitPython and the [Adafruit CircuitPython AMG88xx](https://adafru.it/xha) (<https://adafru.it/xha>) module. This module allows you to easily write Python code that reads thermal imaging data from the sensor.

You can use this sensor with any CircuitPython microcontroller board or with a computer that has GPIO and Python thanks to [Adafruit_Blinka](https://adafru.it/BSN), our [CircuitPython-for-Python compatibility library](https://adafru.it/BSN) (<https://adafru.it/BSN>).

CircuitPython Microcontroller Wiring

First wire up a AMG8833 to your board exactly as shown on the previous pages for Arduino. Here's an example of wiring a Feather M0 to the sensor with I2C:

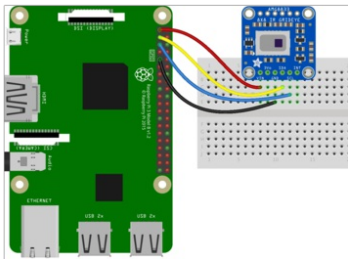


- Board 3V to sensor VIN
- Board GND to sensor GND
- Board SCL to sensor SCL
- Board SDA to sensor SDA

Python Computer Wiring

Since there's *dozens* of Linux computers/boards you can use we will show wiring for Raspberry Pi. For other platforms, [please visit the guide for CircuitPython on Linux to see whether your platform is supported](https://adafru.it/BSN) (<https://adafru.it/BSN>).

Here's the Raspberry Pi wired with I2C:



- Pi 3V3 to sensor VIN
- Pi GND to sensor GND
- Pi SCL to sensor SCL
- Pi SDA to sensor SDA

CircuitPython Installation of AMG88xx Library

You'll need to install the [Adafruit CircuitPython AMG88xx](https://adafru.it/xha) (<https://adafru.it/xha>) library on your CircuitPython board.

First make sure you are running the [latest version of Adafruit CircuitPython](https://adafru.it/Amd) (<https://adafru.it/Amd>) for your board.

Next you'll need to install the necessary libraries to use the hardware--carefully follow the steps to find and install these libraries from [Adafruit's CircuitPython library bundle](https://adafru.it/uap) (<https://adafru.it/uap>). Our CircuitPython starter guide has [a great page on how to install the library bundle](https://adafru.it/ABU) (<https://adafru.it/ABU>).

For non-express boards like the Trinket M0 or Gemma M0, you'll need to manually install the necessary libraries from the bundle:

- `adafruit_amg88xx.mpy`
- `adafruit_bus_device`

Before continuing make sure your board's lib folder or root filesystem has the `adafruit_amg88xx.mpy`, and `adafruit_bus_device` files and folders copied over.

Next [connect to the board's serial REPL \(https://adafru.it/Awz\)](https://adafru.it/Awz) so you are at the CircuitPython >>> prompt.

Python Installation of AMG88xx Library

You'll need to install the Adafruit_Blinka library that provides the CircuitPython support in Python. This may also require enabling I2C on your platform and verifying you are running Python 3. [Since each platform is a little different, and Linux changes often, please visit the CircuitPython on Linux guide to get your computer ready \(https://adafru.it/BSN\)!](https://adafru.it/BSN)

Once that's done, from your command line run the following command:

- `sudo pip3 install adafruit-circuitpython-amg88xx`

If your default Python is version 3 you may need to run 'pip' instead. Just make sure you aren't trying to use CircuitPython on Python 2.x, it isn't supported!

CircuitPython & Python Usage

To demonstrate the usage of the sensor we'll initialize it and read the thermal imaging data the board's Python REPL.

If you're using an I2C connection run the following code to import the necessary modules and initialize the I2C connection with the sensor:

```
import time
import busio
import board
import adafruit_amg88xx
i2c = busio.I2C(board.SCL, board.SDA)
amg = adafruit_amg88xx.AMG88XX(i2c)
```

Now you're ready to read values from the sensor using any of these properties:

- **temperature** - The sensor temperature in degrees Celsius.
- **pixels** - Temperature of each pixel across the sensor in Celsius. Temperatures are stored in a two dimensional list where the first index is the row and the second is the column. The first row is on the side closest to the writing on the sensor.

For example, to print the pixel temp once every second until you tell it to stop:

```
while True:
    for row in amg.pixels:
        print(['{0:.1f}'.format(temp) for temp in row])
        print("")
    print("\n")
    time.sleep(1)
```

```
['27.8', '26.7', '26.7', '26.5', '26.7', '26.7', '26.7', '27.3']
['27.8', '27.0', '26.0', '26.5', '26.5', '26.3', '26.5', '26.7']
['27.0', '25.8', '26.5', '26.0', '26.3', '26.7', '26.5', '26.5']

['26.3', '26.3', '25.8', '26.5', '26.5', '27.0', '26.5', '26.0']
['26.3', '26.3', '26.3', '26.7', '26.5', '26.7', '26.5', '27.0']
['26.0', '26.0', '26.5', '26.3', '26.7', '27.0', '27.5', '26.7']
['26.5', '26.5', '26.3', '26.7', '26.3', '26.5', '27.0', '27.0']
['27.3', '26.7', '26.5', '26.5', '26.7', '26.5', '26.3', '27.0']
['27.8', '26.0', '26.5', '26.3', '26.3', '27.0', '26.5', '26.5']
['26.7', '26.5', '26.5', '26.5', '26.7', '26.5', '26.0', '26.3']
['26.3', '26.3', '26.0', '26.5', '25.8', '25.8', '26.3', '26.5']
```

That's all there is to using AMG88ss with CircuitPython!

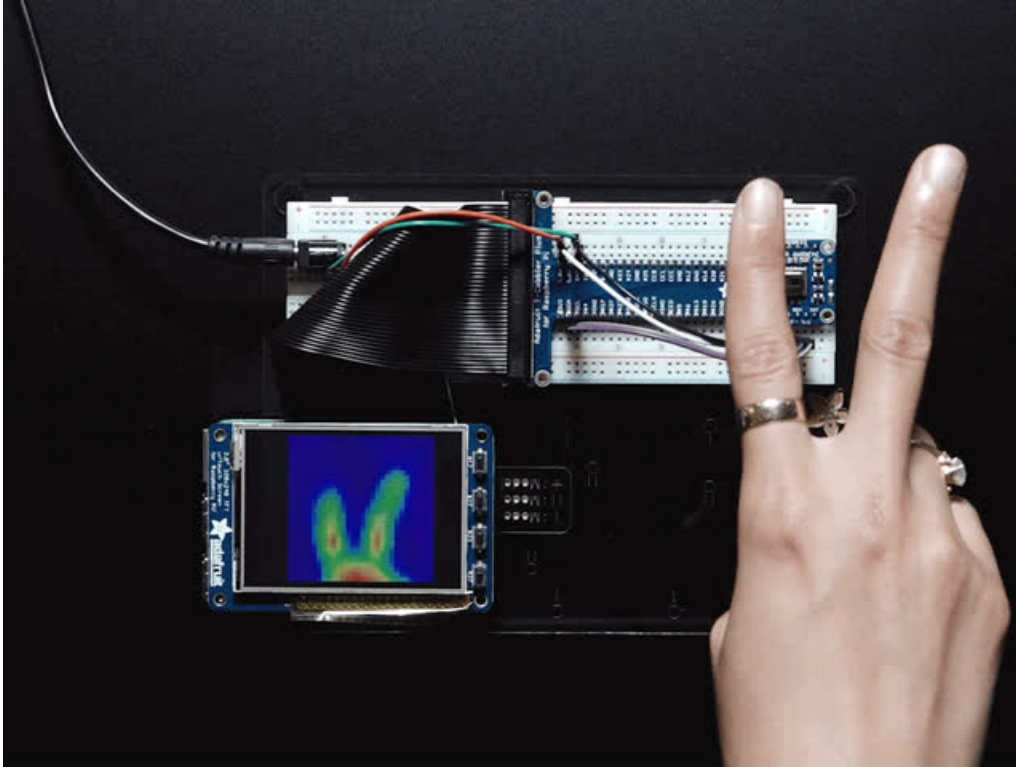
Full Example Code

```
import time
import busio
import board
import adafruit_amg88xx

i2c = busio.I2C(board.SCL, board.SDA)
amg = adafruit_amg88xx.AMG88XX(i2c)

while True:
    for row in amg.pixels:
        # Pad to 1 decimal place
        print(['{0:.1f}'.format(temp) for temp in row])
        print("")
    print("\n")
    time.sleep(1)
```


Raspberry Pi Thermal Camera



The Raspberry Pi also has an i2c interface, and even better has processing capability to interpolate and filter the sensor output. By adding processing power, you can 'turn' the 8x8 output into what appears to be a higher-resolution display.

We're using a PiTFT 2.8" and a Pi Cobbler but the code can be adapted to output to the HDMI display - we're using pygame to draw to the framebuffer.

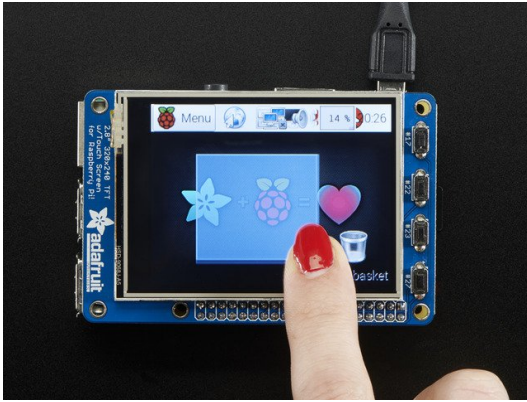
You can use any Raspberry Pi computer, from Pi A+ to Pi 3 or even a Pi Zero, but we happen to have a Pi 3 on our desk set up already so we're using that.



Raspberry Pi 3 - Model B - ARMv8 with 1G RAM

\$35.00
IN STOCK

ADD TO CART



PiTFT Plus Assembled 320x240 2.8" TFT + Resistive Touchscreen

\$34.95
IN STOCK

ADD TO CART



Assembled Pi T-Cobbler Plus - GPIO Breakout

\$7.95
IN STOCK

ADD TO CART

Setup PiTFT

If you have not done so already, the first thing you will need to do is setup your PiTFT. Instructions on how to do so can be found in [this guide \(https://adafruit.it/sha\)](https://adafruit.it/sha).

Install Python Software

Once your PiTFT is all set up, and you have Internet access set up [go back to this page and install the Python software for the AMG8833 so you can read data from the sensor. \(https://adafruit.it/C8B\)](https://adafruit.it/C8B)

Finally, install both pygame and scipy. Pygame lets us draw easily to a screen using python, we'll use that to make the display work. Scipy is a powerful scientific/data processing library that we can use to magically turn the $8 \times 8 = 64$ pixel array into something that looks more like a $32 \times 32 = 1024$ pixel array. Wow, isn't digital signal processing cool?

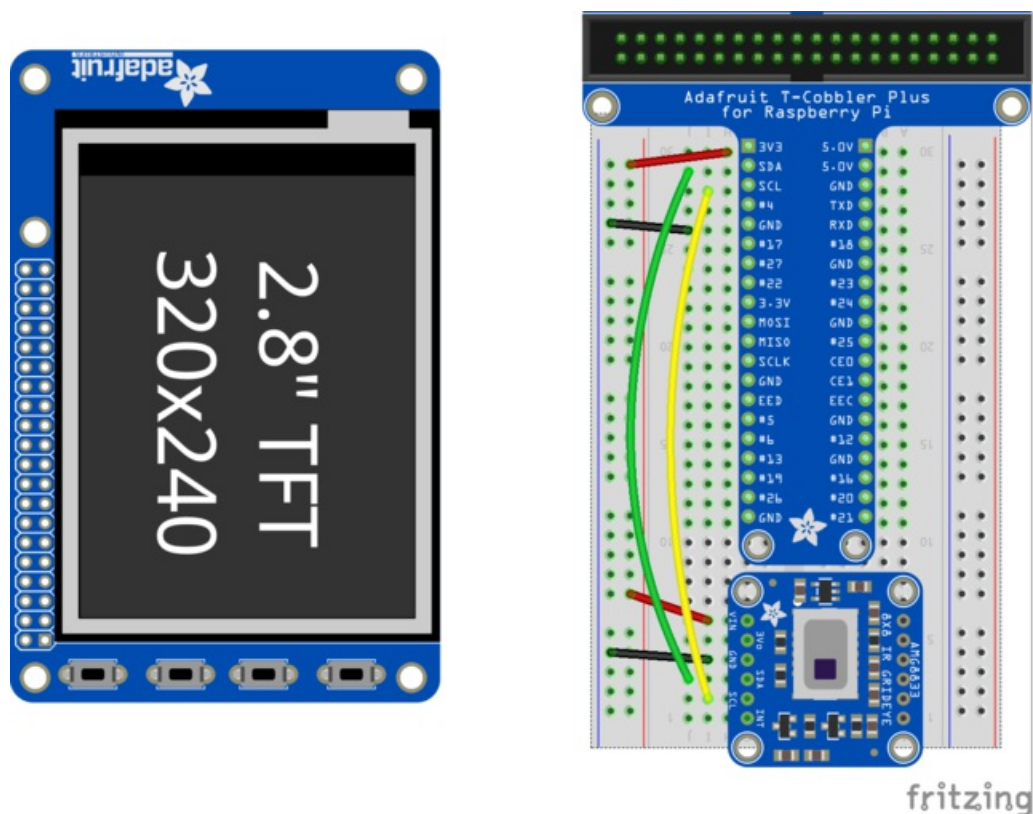
```
sudo apt-get install -y python-scipy python-pygame
sudo pip3 install colour
```

Wiring Up Sensor

With the Pi powered off, we can wire up the sensor to the Pi Cobbler like this:

- Connect **Vin** to the 3V or 5V power supply (either is fine)
- Connect **GND** to the ground pin on the Cobbler
- Connect **SDA** to **SDA** on the Cobbler
- Connect **SCL** to **SCL** on the Cobbler

You can also use direct wires, we happen to have a Cobbler ready. remember you can plug the cobbler into the bottom of the PiTFT to get access to all the pins!



Now you should be able to verify that the sensor is wired up correctly by asking the Pi to detect what addresses it can see on the I2C bus:

```
sudo i2cdetect -y 1
```

```
pi@deanspi:~$ sudo i2cdetect -y 1
   0  1  2  3  4  5  6  7  8  9  a  b  c  d  e  f
00:  --  --  --  --  --  --  --  --  --  --  --  --  --  --  --
10:  --  --  --  --  --  --  --  --  --  --  --  --  --  --  --
20:  --  --  --  --  --  --  --  --  --  --  --  --  --  --  --
30:  --  --  --  --  --  --  --  --  --  --  --  --  --  --  --
40:  --  --  --  --  --  --  --  --  --  --  --  --  --  --  --
50:  --  --  --  --  --  --  --  --  --  --  --  --  --  --  --
60:  --  --  --  --  --  --  --  69  --  --  --  --  --  --  --
70:  --  --  --  --  --  --  --  --  --  --  --  --  --  --  --
pi@deanspi:~$
```

It should show up under it's default address (0x69). If you don't see 0x69, check your wiring, did you install I2C

support, etc?

Run example code

At long last, we are finally ready to run our example code

```
"""This example is for Raspberry Pi (Linux) only!
   It will not work on microcontrollers running CircuitPython!"""

import os
import math
import time

import busio
import board

import numpy as np
import pygame
from scipy.interpolate import griddata

from colour import Color

import adafruit_amg88xx

i2c_bus = busio.I2C(board.SCL, board.SDA)

#low range of the sensor (this will be blue on the screen)
MINTEMP = 26.

#high range of the sensor (this will be red on the screen)
MAXTEMP = 32.

#how many color values we can have
COLORDEPTH = 1024

os.putenv('SDL_FBDEV', '/dev/fb1')
pygame.init()

#initialize the sensor
sensor = adafruit_amg88xx.AMG88XX(i2c_bus)

# pylint: disable=invalid-slice-index
points = [(math.floor(ix / 8), (ix % 8)) for ix in range(0, 64)]
grid_x, grid_y = np.mgrid[0:7:32j, 0:7:32j]
# pylint: enable=invalid-slice-index

#sensor is an 8x8 grid so lets do a square
height = 240
width = 240

#the list of colors we can choose from
blue = Color("indigo")
colors = list(blue.range_to(Color("red"), COLORDEPTH))

#create the array of colors
colors = [(int(c.red * 255), int(c.green * 255), int(c.blue * 255)) for c in colors]

displayPixelWidth = width / 30
displayPixelHeight = height / 30
```

```

displayPixelHeight = height / 50

lcd = pygame.display.set_mode((width, height))

lcd.fill((255, 0, 0))

pygame.display.update()
pygame.mouse.set_visible(False)

lcd.fill((0, 0, 0))
pygame.display.update()

#some utility functions
def constrain(val, min_val, max_val):
    return min(max_val, max(min_val, val))

def map_value(x, in_min, in_max, out_min, out_max):
    return (x - in_min) * (out_max - out_min) / (in_max - in_min) + out_min

#let the sensor initialize
time.sleep(.1)

while True:

    #read the pixels
    pixels = []
    for row in sensor.pixels:
        pixels = pixels + row
    pixels = [map_value(p, MINTEMP, MAXTEMP, 0, COLORDEPTH - 1) for p in pixels]

    #perform interpolation
    bicubic = griddata(points, pixels, (grid_x, grid_y), method='cubic')

    #draw everything
    for ix, row in enumerate(bicubic):
        for jx, pixel in enumerate(row):
            pygame.draw.rect(lcd, colors[constrain(int(pixel), 0, COLORDEPTH- 1)],
                             (displayPixelHeight * ix, displayPixelWidth * jx,
                              displayPixelHeight, displayPixelWidth))

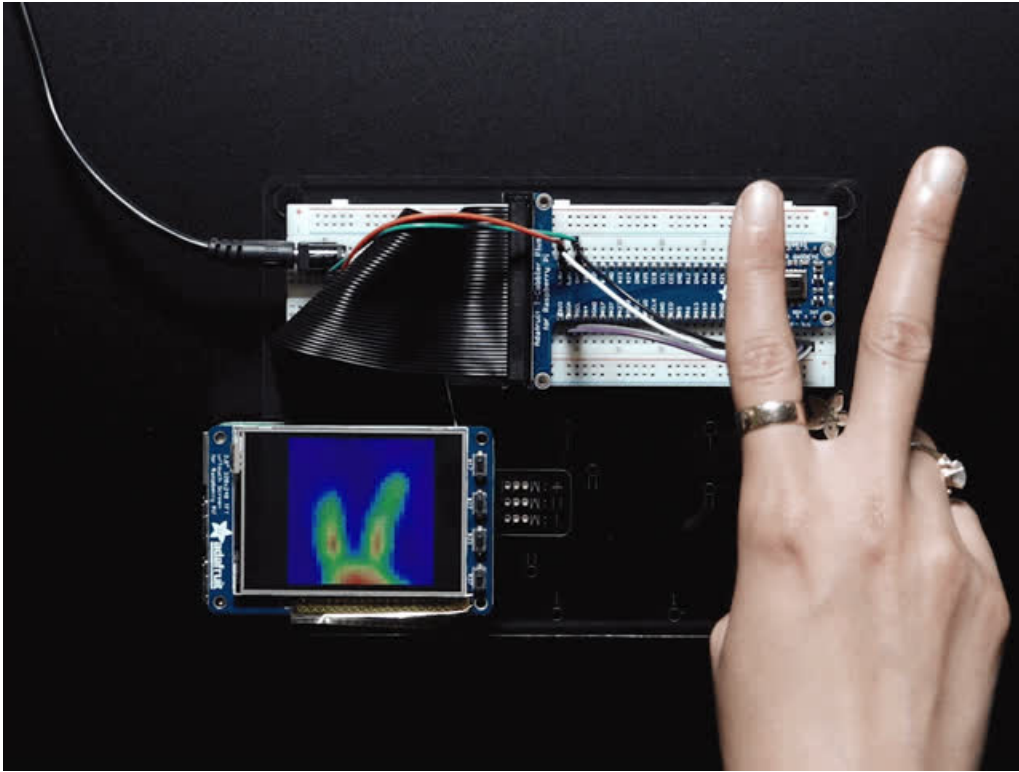
    pygame.display.update()

```

If you have everything installed and wired up correctly, you should see a nice thermal camera image. Cool tones (blue and purple) are cooler temperatures, and warmer tones (yellow, red) are warmer temperatures.

If your image seems to be flipped on the screen, try changing the orientation of the AMG8833 breakout on the breadboard.

If you're interested in the details, and want to know more about how we made 64 pixels look like many more, it's called [bicubic interpolation \(https://adafruit.it/xgA\)](https://adafruit.it/xgA) (hat tip to [OSHPark for the idea \(https://adafruit.it/xgB\)!](https://adafruit.it/xgB))



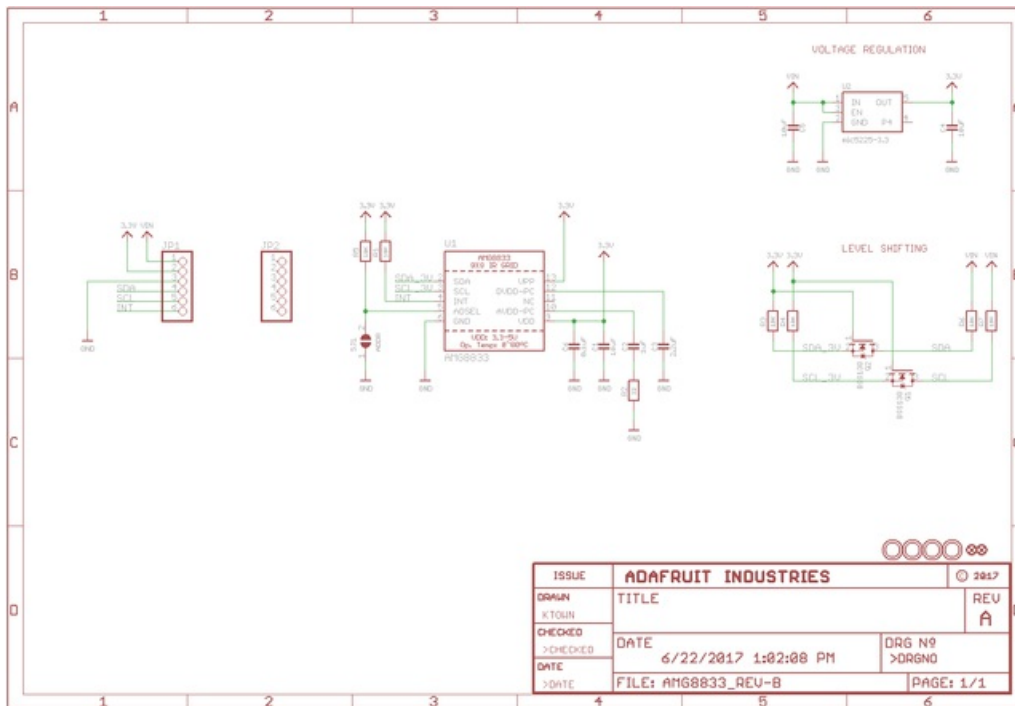
Downloads

Documents

- [AMG8833 datasheet \(https://adafru.it/xgE\)](https://adafru.it/xgE)
- [AMG8833 Arduino Driver \(https://adafru.it/xfw\)](https://adafru.it/xfw)
- [Fritzing object in the Adafruit Fritzing library \(https://adafru.it/aP3\)](https://adafru.it/aP3)
- [AMG8833 CircuitPython Driver \(https://adafru.it/xha\)](https://adafru.it/xha)
- [AMG8833 breakout PCB files \(EAGLE format\) \(https://adafru.it/xhb\)](https://adafru.it/xhb)

Schematic

click to enlarge



Dimensions

in inches. Click to enlarge

