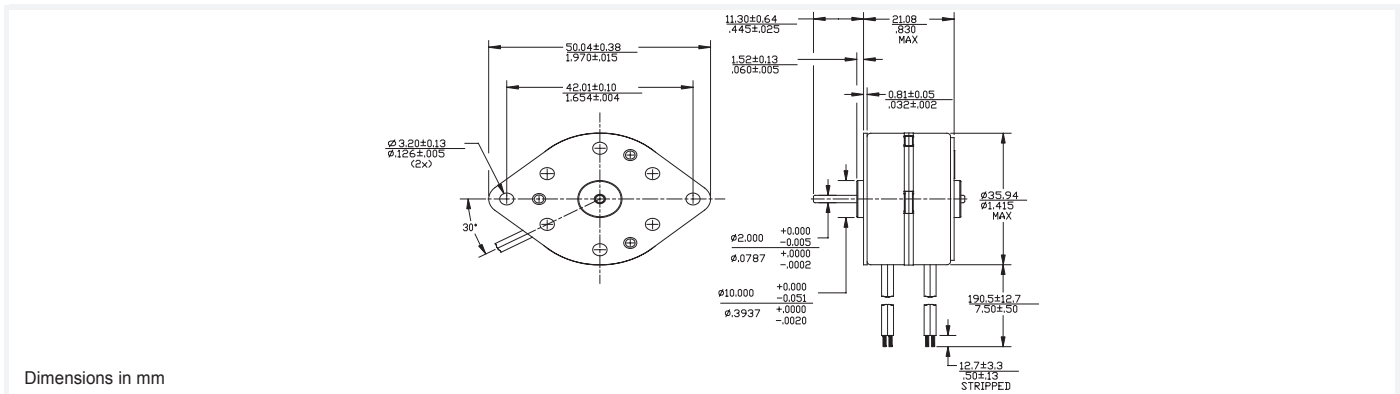


35L048B

RoHS Compliant

Ø35mm

28 mNm



Dimensions in mm

35L048B

Electrical Data	35L048B1U Unipolar	35L048B2U Unipolar	35L048B1B Bipolar	35L048B2B Bipolar	
1 Operating Voltage	5	12	5	12	VDC
2 Resistance per Phase, ± 10%	11.0	64.0	11.0	64.0	Ohms
3 Inductance per Phase, typ	7.8	40.0	15.0	72.0	mH
4 Rated Current per Phase *	0.45	0.19	0.45	0.19	A
<b>Coil independent parameters</b>					
5 Holding Torque, MIN *	25 (3.5)	25 (3.5)	28 (4)	28 (4)	mNm (oz-in)
6 Detent Torque, Max			4.2 (0.6)		mNm (oz-in)
7 Rotor Inertia			4 (0.021)		gcm <sup>2</sup> (oz-in-s <sup>2</sup> )
8 Step Angle			7.5		Degree
9 Absolute accuracy 2 ph. On, Full step			± .5		Degree
10 Steps per Revolution			48.0		
11 Ambient Temp Range (operating)			-20 to +70 (-4 to +158)		°C (°F)
12 Maximum Coil Temperature			130 (266)		°C (°F)
13 Bearing Type			Sintered Bronze Sleeve		
14 Insulation Resistance at 500 VDC			100.0		Mohms
15 Dielectric Withstanding Voltage			650 for 2 seconds		VAC
16 Weight			88 (3.1)		g (oz)
17 Leadwire			AWG #26, UL 1430 (105°C, 300V)		

All Motor Data Values at 20°C Unless Otherwise Specified

\* Energize at Rated Current, 2 Phase On

