

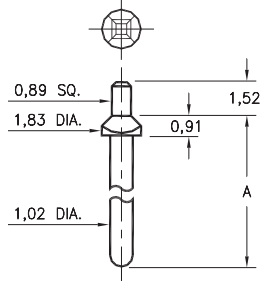
MALE PCB PINS

PRINTED CIRCUIT PINS

8600/8954/8955

8XXX-X-05-XX-00-00-03-0

Square press-fit in 1,09 plated through-hole

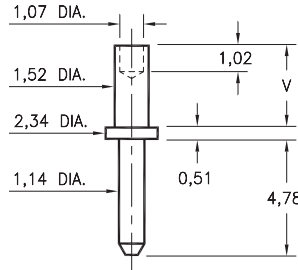


Basic Part Number	Pin Length A
8600-0	10,16
8600-1	21,59
8600-2	30,48
8954-0	3,45
8955-0	16,64

3159

3159-X-00-XX-00-00-08-0

Swage mount in 1,63 hole

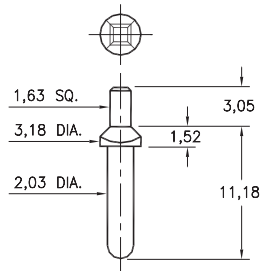


Basic Part Number	Board Thickness	Length V
3159-1	0,79	1,57
3159-2	1,57	2,39
3159-3	2,39	3,18
3159-4	3,18	3,96

8952

8952-0-05-XX-00-00-03-0

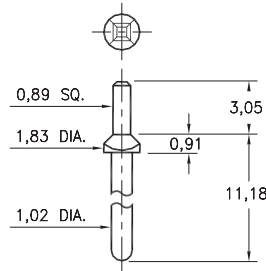
Square press-fit in 2,21 plated through-hole



8953

8953-0-05-XX-00-00-03-0

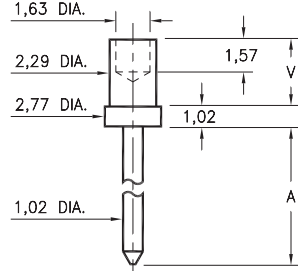
Square press-fit in 1,19 plated through-hole



3230

3230-X-00-XX-00-00-08-0

Swage mount in 2,39 hole



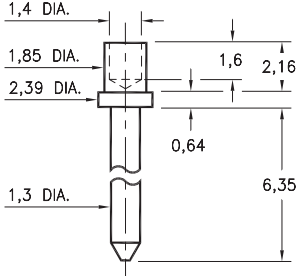
Basic Part Number	Board Thickness	Length A	Length V
3230-1	0,79	5,13	1,65
3230-2	1,57	5,79	2,41
3230-3	2,39	6,55	3,18
3230-4	3,18	7,32	3,94

3146

3146-2-00-XX-00-00-08-0

Swage mount in 1,93 hole

For a 1,57 thick board

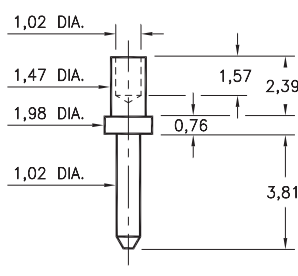


3142

3142-2-00-XX-00-00-08-0

Swage mount in 1,57 hole

For a 1,57 thick board

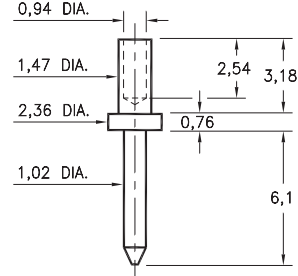


3232

3232-3-00-XX-00-00-08-0

Swage mount in 1,57 hole

For a 2,39 thick board

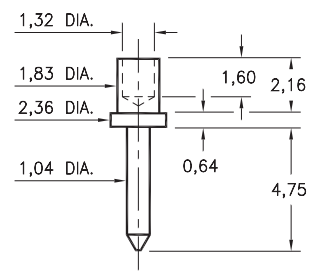


3145

3145-2-00-XX-00-00-08-0

Swage mount in 1,93 hole

For a 1,57 thick board



SPECIFICATIONS:

Pin Material: Brass Alloy 360, 1/2 Hard
(Except swage pins which are annealed)

Dimensions: Millimeters

Tolerances On: Lengths: $\pm 0,13$
Diameters: $\pm 0,051$
Angles: $\pm 2^\circ$



ORDER CODE: XXXX - X - 0X - XX - 00 - 00 - XX - 0

BASIC PART #

SPECIFY PIN FINISH:

- 01 5,08 μ m TIN/LEAD OVER NICKEL
- ◆ 80 5,08 μ m TIN OVER NICKEL (RoHS)
- ◆ 15 0,25 μ m GOLD OVER NICKEL (RoHS)
- ◆ 21 0,51 μ m GOLD OVER NICKEL (RoHS)
- ◆ 34 1,27 μ m GOLD OVER NICKEL (RoHS)

