

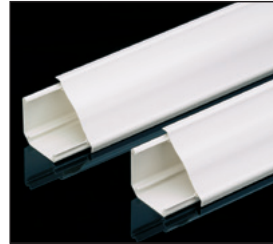
Pan-Way[®] Cove Raceway System

PANDUIT[®]

SPECIFICATION SHEET

specifications

WCM35 non-metallic multi-channel capable surface shall be used to route, protect, and conceal data, voice, video, fiber optic, and power cabling. The raceway shall be listed as suitable for use in applications up to 600 volts between conductors by Underwriters Laboratories, Inc. per standard 5A, and by Canadian Standards Association, Inc. per 22.2 no.62.1-03, when screw secured and installed per instructions. A full complement of fittings with a 1" minimum bend radius compliant with TIA/EIA-568-B, must be available. Divider walls must be available to form separate channels in the multi-channel raceway. WCM35 raceway will be manufactured from impact-resistant material with flammability rating of V-0. WCM35 raceway must be tamper resistant yet allow access for moves, adds and changes. WCM35 raceway finish shall be pure color and will resist scratches and dents and will not peel or corrode. WCM35 Raceway shall be available in off-white as a standard color, shall be paintable, and shall be optimized for use with the Panduit[®] Pan-Net[®] Communication System.



technical information

Material:	Rigid PVC
Flammability:	UL94V-0; FT4
Voltage rating:	UL-5A 600VAC CSA C22.2 No.62-93 300VAC
Approvals:	UL Listed 95425 (Raceway); UL Listed E116129 (Fittings)
NEC:	Article 388
Color:	Off White
CSI spec form:	LP-CSISPEC-WCM-1

key features and benefits

1" bend radius control	Fittings conform to TIA/EIA bend radius control standards while providing an aesthetic appearance; bend radius control ensures maximum headroom of high performance copper and fiber cable
Can be used as trunking raceway	Decorative appearance preserves original architectural styling
Can be painted with latex paint	Blends well with any décor creating a virtually invisible premise raceway routing solution
Lightweight	Reduces install fatigue; allows for one-person installation
Non-metallic construction	Solid color throughout will not chip, peel, rust, or corrode; masks scratches
High impact resistance	Extremely durable for a long life
Easy to cut with standard saws and saw blades	Reduces installed cost and the need for special cutting devices
Designer profile	Maintains aesthetically pleasing appearance
Synergy with complete line of Pan-Way[®] Raceway	Cove Raceway may be integrated with other Panduit Raceway Systems

applications

Pan-Way[®] Cove Raceway mounts in the horizontal corner between ceiling and wall and/or the vertical corner between walls and maintains an aesthetically pleasing design that discreetly conceals cabling. Cove Raceway is tamper resistant yet allows

access for moves, adds and changes and includes a full complement of fittings, accessories and termination options. Cove Raceway is compatible with other Pan-Way Raceway Systems.

Cove Raceway:

Base:	WCM35BIW8*
Cover:	WCM35CIW8*
Divider wall:	WCM35DW8^

Cove Raceway Fittings:

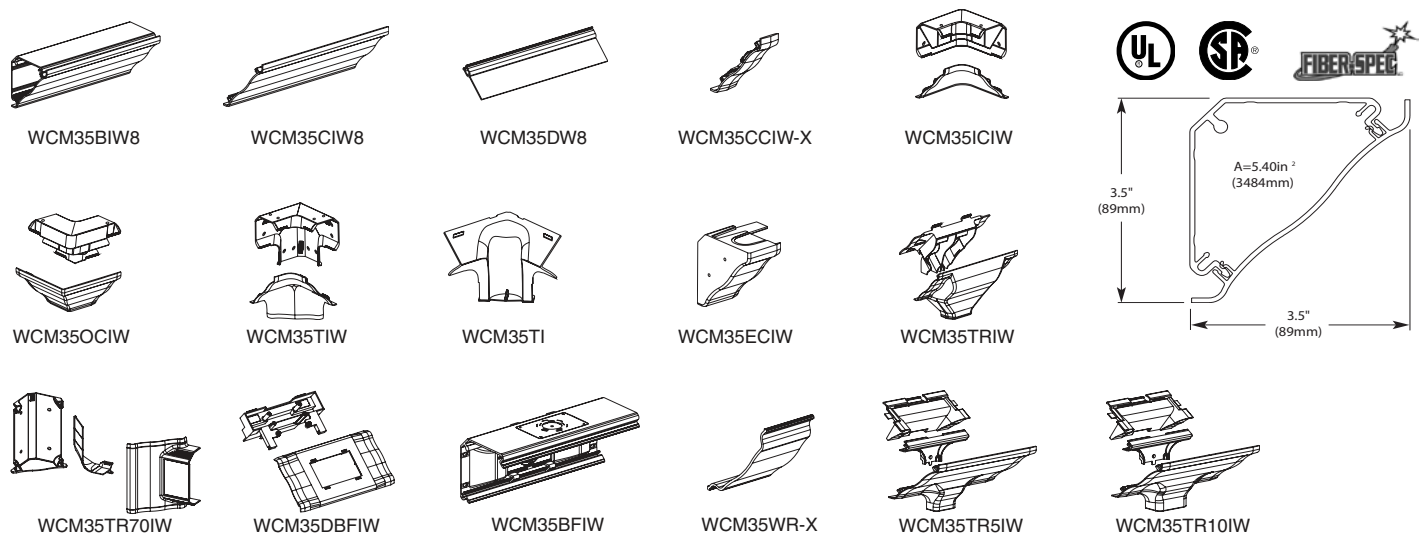
Cover coupler:	WCM35CCIW-X
Inside corner fitting:	WCM35ICIW
Outside corner fitting:	WCM35OCIW
Tee fitting:	WCM35TIW
Tee fitting insert:	WCM35TI^
End cap fitting:	WCM35ECIW
Transition fitting:	WCM35TRIW
Transition fitting LD/LDPH5 raceway:	WCM35TR5IW
Transition fitting LD/LDPH10 raceway:	WCM35TR10IW
Transition fitting T70 raceway:	WCM35TR70IW
Device box and faceplate adapter:	WCM35DBFIW
Backfeed fitting:	WCM35BFIW
Wire retainer:	WCM35WR-X^

*Supplied in eight foot lengths. IW (Off White) in part number represents color availability.

^ Available in International Gray only.

Pan-Way® Cove Raceway System

Raceway Type and Configuration	Fill Area (in ²)	Electrical Cables			Data Grade Cables								Coax Cables				Fiber Optic Cable	
		14 AWG	12 AWG	10 AWG	24 AWG		24 AWG		24 AWG		24 AWG							
		THHN/THWN/T90			Cat. 5e – Plenum		Cat. 5e – Riser		Cat. 6 and Cat. 6A (SD)		Cat. 6A		RG6		RG59/u		2 Strand	
		0.111	0.130	0.164	DIA = 0.193		DIA = 0.225		DIA = 0.240		DIA = 0.300		DIA = 0.275		DIA = 0.242		DIA = 0.175	
		Fill			Fill		Fill		Fill		Fill		Fill		Fill		Fill	
		MAX	MAX	MAX	SPEC	MAX	SPEC	MAX	SPEC	MAX	SPEC	MAX	SPEC	MAX	SPEC	MAX	SPEC	MAX
(UL Temp Rise Test)			(40%)	(60%)	(40%)	(60%)	(40%)	(60%)	(40%)	(60%)	(40%)	(60%)	(40%)	(60%)	(40%)	(60%)		
WCM35: No Devices	5.40	50	40	30	73	110	54	81	47	71	30	45	36	54	46	70	89	134
WCM35: Using Wire Retainer — No Devices	5.00	50	40	30	68	102	50	75	44	66	28	42	33	50	43	65	83	124
WCM35: Power and Data Using Wire Retainer and Divider Wall	2.40	—	—	—	32	49	24	36	21	31	13	20	16	24	20	31	39	59
	2.40	30	25	20	—	—	—	—	—	—	—	—	—	—	—	—	—	—
WCM35: Power and Data Using DBF	160	—	—	—	21	32	16	24	14	21	9	13	10	16	13	20	26	39
	140	25	25	20	—	—	—	—	—	—	—	—	—	—	—	—	—	—
WCM35: Power and Data Using Low Profile Transition Insert	180	25	25	20	—	—	—	—	—	—	—	—	—	—	—	—	—	—
	2.50	—	—	—	34	51	25	37	22	33	14	21	16	25	21	32	41	62



Dimensions are in inches. (Dimensions in parenthesis are metric).

WORLDWIDE SUBSIDIARIES AND SALES OFFICES

PANDUIT CANADA
Markham, Ontario
cs-cdn@panduit.com
Phone: 800.777.3300

PANDUIT EUROPE LTD.
London, UK
cs-emea@panduit.com
Phone: 44.20.8601.7200

PANDUIT SINGAPORE PTE. LTD.
Republic of Singapore
cs-ap@panduit.com
Phone: 65.6305.7575

PANDUIT JAPAN
Tokyo, Japan
cs-japan@panduit.com
Phone: 81.3.6863.6000

PANDUIT LATIN AMERICA
Guadalajara, Mexico
cs-la@panduit.com
Phone: 52.33.3777.6000

PANDUIT AUSTRALIA PTY. LTD.
Victoria, Australia
cs-aus@panduit.com
Phone: 61.3.9794.9020

For a copy of Panduit product warranties, log on to www.panduit.com/warranty



For more information
Visit us at www.panduit.com
Contact Customer Service by email: cs@panduit.com
or by phone: 800.777.3300

©2014 Panduit Corp.
ALL RIGHTS RESERVED.
SRSP26--WW-ENG
Replaces WW-SRSP05
12/2014