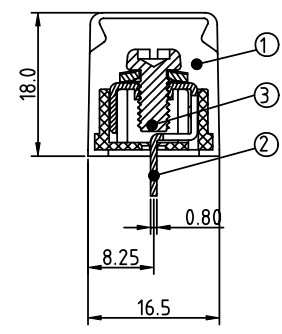
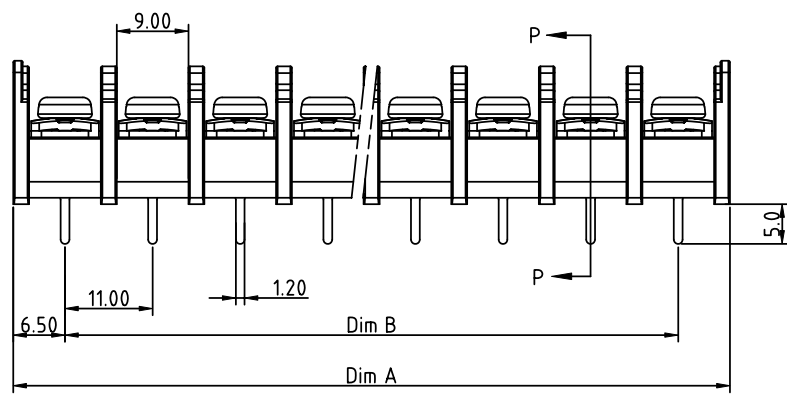
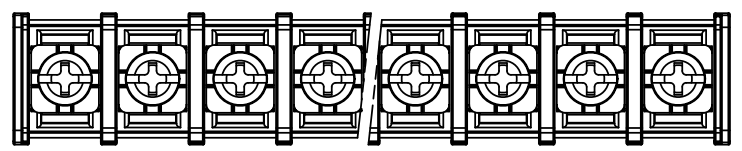
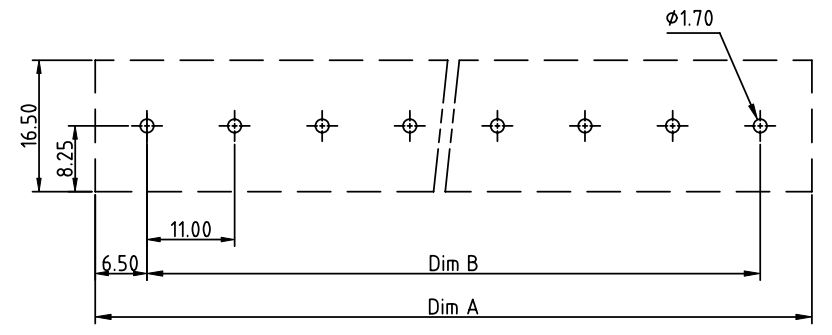


PRODUCT NUMBER	PITCH
YK701xx0x0JOG	11.00mm

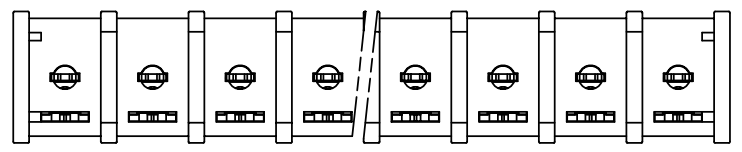


Section P-P



RECOMMENDED P.C.B. LAYOUT  
TOP VIEW

- MATERIALS & ELECTRICAL**
- RATED VOLTAGE & CURRENT: 300 V, 30 A
  - WITHSTAND VOLTAGE: AC 2000 V/Min
  - INSULATION RESISTANCE: 1000 MΩ OR MORE AT DC 500 V
  - OPERATING TEMPERATURE RANG: -40 °C ~ +115 °C
  - SCREW TORQUE VALUE: 13Lb-In
  - WIRE RANGE: 22 - 10AWG
  - 1) HOUSING: THERMOPLASTICS, UL94-V0 BLACK
  - 2) TERMINAL: BRASS, 0.8t
  - 3) TERMINAL SCREWS: STEEL, M4.0



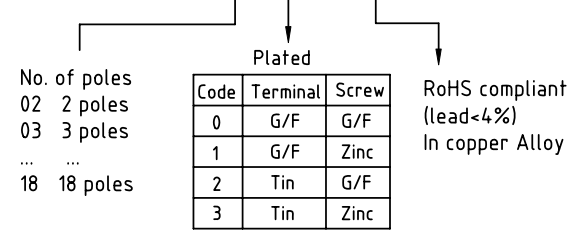
DIMENSION

Dim A	N×11.0+2.0
Dim B	(N-1)×11.0

N=Number of poles

Poles	Tolerance
2p-4p	±0.20
5p-11p	±0.30
17p-18p	±0.40

PART NO.: YK 701xx 0 x 0 JOG



mat'l. code		surface ASME Y14.5 ✓	tolerance ASME Y14.5	projection	product family
ltr	ecn no	dr	date	tolerances unless otherwise specified	TERMINAL BLOCK
				angles	title
				X°±1°	TERMINAL BLOCK
				scale	BARRIER TYPE
				dr EVAN LU 061114	dwg no
				enr EVAN LU 061114	YK701xx0x0JOG
				chr HANKE FENG 061114	sheet 1 of 1
				appd SHI JUN 061114	size A4
					type CUSTOMER Drawing
sheet index	revision sheet	A	1		