

"High Frequency Ceramic Solutions"

2.45 GHz Antenna

P/N 2450AT18E0100

Detail Specification: 08/19/10

Page 1 of 3

General Specifications

Part Number	2450AT18E0100
Frequency Range	2400 - 2500 MHz
Peak Gain	1.0 dBi typ. (YZ-total)
Average Gain	-3.0 dBi typ. (YZ-total)
Return Loss	4.4 dB min.
Operating Temperature	-40 to +85°C
Storage Temperature Range	+5 ~ +35 °C, Humidity 45~75%RH, 12 mos. max

Input Power	2W max.
Impedance	50 Ω
Reel Quantity	3,000

No.	Function	Terminal Configuration
1	Feeding Point	
2	NC	

Mechanical Dimensions

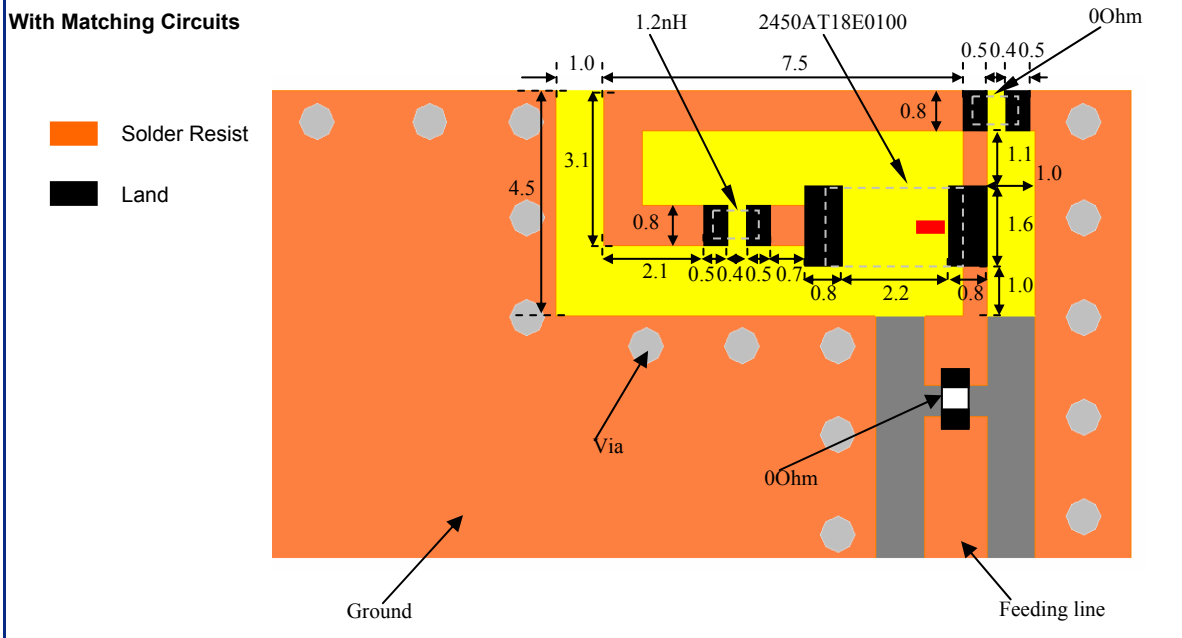
	In	mm
L	0.126 ± 0.008	3.20 ± 0.20
W	0.063 ± 0.008	1.60 ± 0.20
T	0.047 +.004/-.008	1.20 +0.1/-0.2
a	0.020 ± 0.012	0.50 ± 0.30

Mounting Considerations

Mount these devices with brown mark facing up. Units: mm

* Line width should be designed to provide 50 Ω impedance matching characteristics.

With Matching Circuits



Johanson Technology, Inc. reserves the right to make design changes without notice.

All sales are subject to Johanson Technology, Inc. terms and conditions.

"High Frequency Ceramic Solutions"

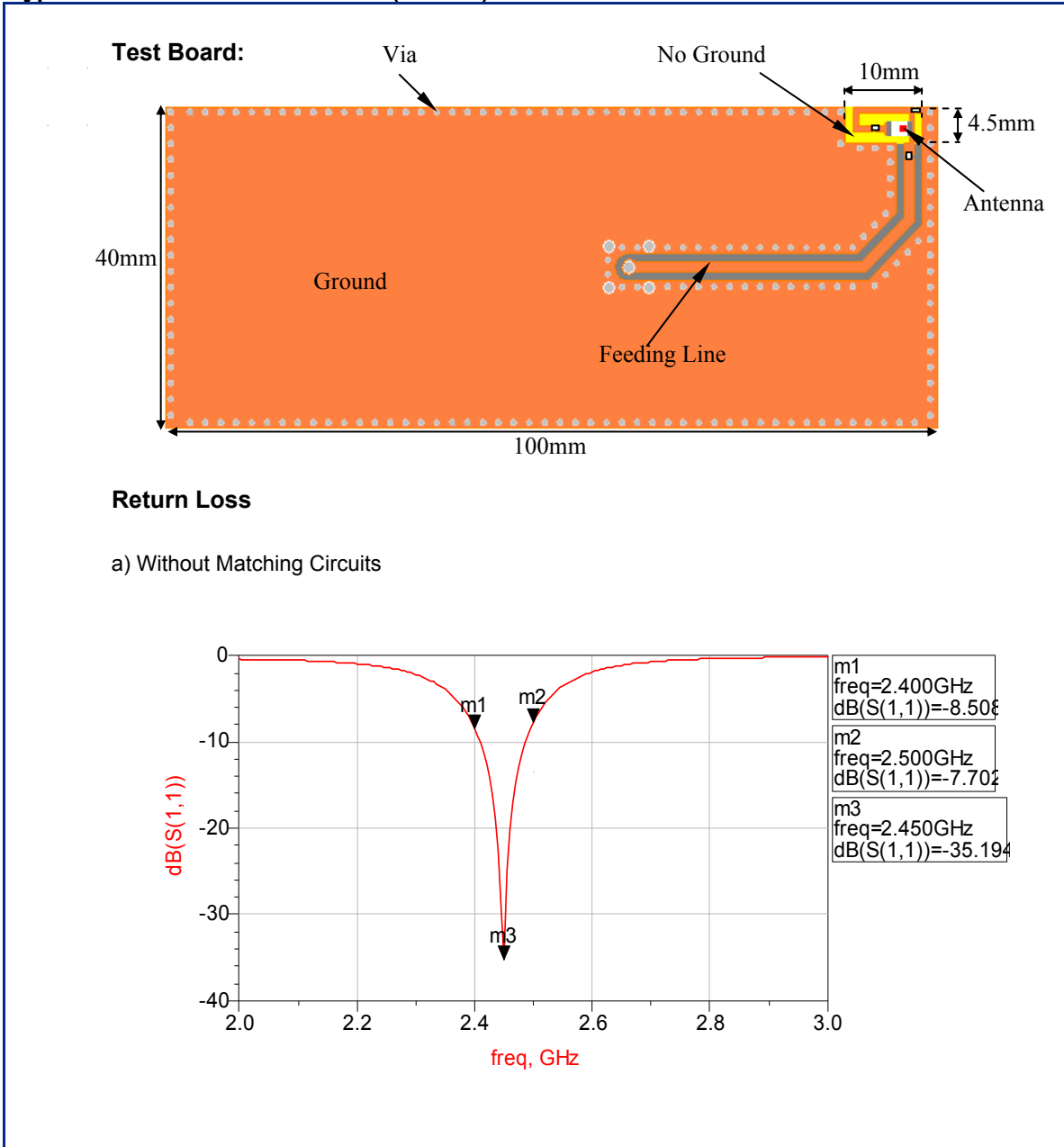
2.45 GHz Antenna

P/N 2450AT18E0100

Detail Specification: 08/19/10

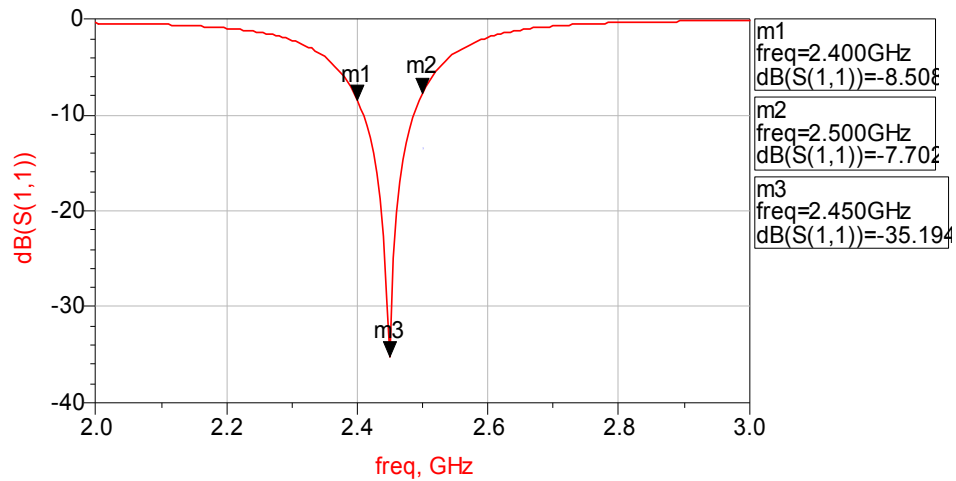
Page 2 of 3

Typical Electrical Characteristics (T=25°C)



Return Loss

a) Without Matching Circuits



Johanson Technology, Inc. reserves the right to make design changes without notice.
All sales are subject to Johanson Technology, Inc. terms and conditions.



"High Frequency Ceramic Solutions"

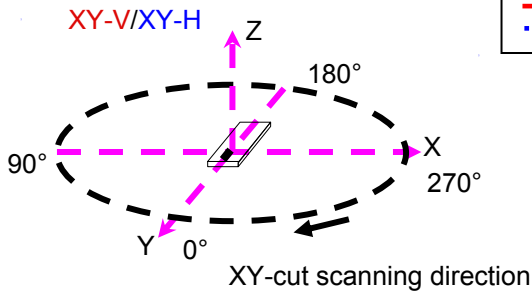
2.45 GHz Antenna

P/N 2450AT18E0100

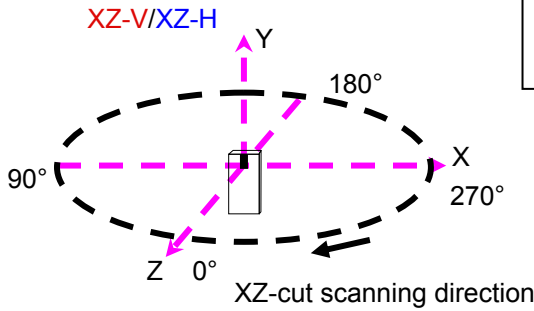
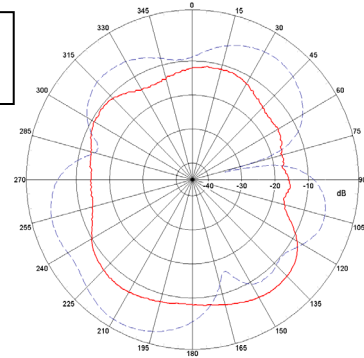
Detail Specification: 08/19/10

Page 3 of 3

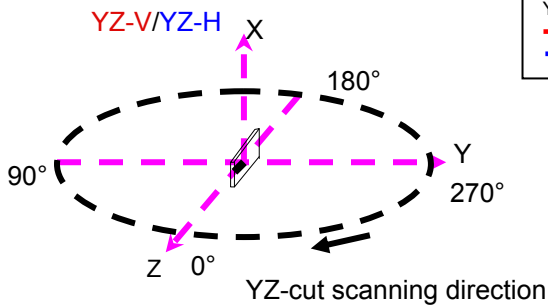
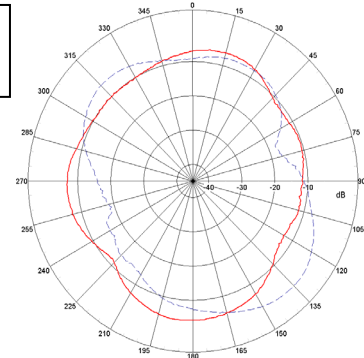
Typical Radiation Patterns



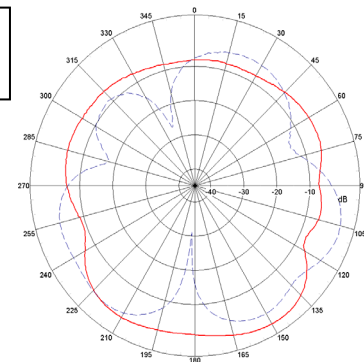
XY cut @2.45GHz
 — Vertical
 Horizontal



XZ cut @2.45GHz
 — Vertical
 Horizontal



YZ cut @2.45GHz
 — Vertical
 Horizontal



Johanson Technology, Inc. reserves the right to make design changes without notice.
 All sales are subject to Johanson Technology, Inc. terms and conditions.



www.johansontechnology.com
 4001 Calle Tecate • Camarillo, CA 93012 • TEL 805.389.1166 FAX 805.389.1821

2010 Johanson Technology, Inc. All Rights Reserved