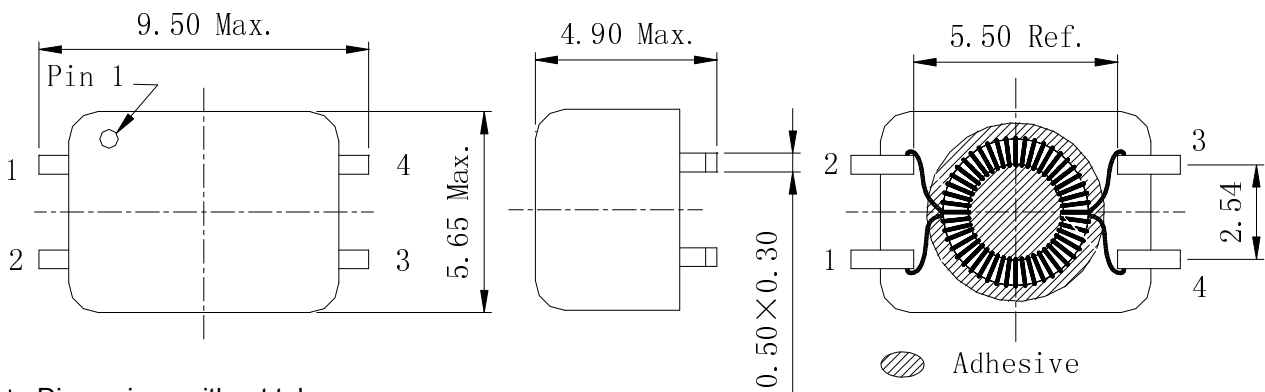


**Type: CPFC54**
**◆ Product Description**

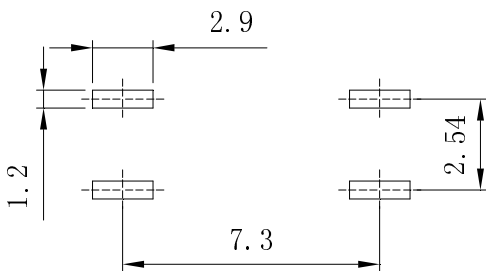
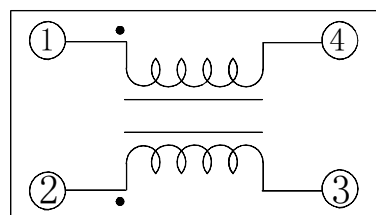
- 9.5 × 5.65mm Max.(L×W), 4.90mm Max. Height .


**◆ Feature**

- Ideally used in xDSL, Modem and telecom applications.
- RoHS Compliance.

**◆ Dimensions (mm)**


- \* Dimensions without tolerance are approx.
- \* Dimension does not include solder used on coil.
- \* Pin pitch shall be measured at the root of terminal.

**◆ Land Pattern (mm)**

**◆ Schematics (Bottom)**


**Type: CPFC54**
**◆ Specification**

Part Name	Stamp	Inductance ( $\mu\text{H}$ ) (1-4) or (2-3) ※1	$L_S$ (nH)Typ. 1-4(2+3 short) ※2	$I_R$ (mA)1-2 (3+4short) ※3	D.C.R(m $\Omega$ ) Typ. (1-4) or (2-3) (at 20°C)	Hipot (V) (1, 4-2, 3) DC 2s 0.5mA
CPFC54-050C	050C	5 $\pm$ 30%	50	900	100	250
CPFC54-110C	110C	11 $\pm$ 30%	50	700	120	250
CPFC54-250C	250C	25 $\pm$ 30%	150	700	130	250
CPFC54-250S	250S	25 $\pm$ 30%	1500	700	130	250
CPFC54-510C	510C	51 $\pm$ 30%	200	600	160	250
CPFC54-510S	510S	51 $\pm$ 30%	2000	600	160	250
CPFC54-101C	101C	100 $\pm$ 30%	200	500	230	250
CPFC54-471C	471C	470 $\pm$ 30%	200	500	200	750
CPFC54-102C	102C	$1000^{+50\%}_{-30\%}$	250	500	200	750
CPFC54-222C	222C	$2200^{+50\%}_{-30\%}$	250	400	400	750
CPFC54-472C	472C	$4700^{+50\%}_{-30\%}$	300	200	650	750

※1、※2 Measuring condition 100kHz, 0.1V

※3 .  $I_R$ :DC current when temperature of coil increased up to 40°C.( $T_a=20^\circ\text{C}$ )