



---

<b>Title</b>	<b><i>Engineering Prototype Report for EP-16 - 2.75 W Charger/Adapter Using LNK501 (LinkSwitch®)</i></b>
<b>Specification</b>	85 VAC to 265 VAC Input, 5.5 V, 500 mA Output
<b>Application</b>	Low Cost Charger/Adapter
<b>Author</b>	PI Applications
<b>Document Number</b>	EPR-16
<b>Date</b>	17-May-04
<b>Revision</b>	1.6

#### **Features**

- Very low cost, low component count charger/adapter – replaces linear transformer based solutions
- Extremely simple circuit configuration designed for high volume, low cost manufacturing
  - No surface mount components required
- Small EE13 transformer allows compact size
- Approximate constant voltage, constant current (CV/CC) primary sensed output characteristic
  - No optocoupler or sense resistors required
- Efficiency greater than 71%
- No-load power consumption <300 mW at 265 VAC
- No Y1 safety capacitor required
  - Only transformer bridges primary-to-secondary safety barrier
  - Ultra low leakage design (<5  $\mu$ A)

The products and applications illustrated herein (including circuits external to the products and transformer construction) may be covered by one or more U.S. and foreign patents or potentially by pending U.S. and foreign patent applications assigned to Power Integrations. A complete list of Power Integrations' patents may be found at [www.powerint.com](http://www.powerint.com).

## Table Of Contents

1	Introduction.....	4
2	Power Supply Specification .....	5
3	Schematic.....	7
4	Circuit Description .....	8
4.1	Input Stage.....	8
4.2	LinkSwitch Operation .....	9
4.3	Transformer.....	10
4.4	Clamp and Feedback Components.....	10
4.5	Output Stage .....	11
5	PCB Layout .....	12
6	Bill Of Materials .....	13
7	Transformer .....	14
7.1	Transformer Winding.....	14
7.2	Electrical Specifications.....	14
7.3	Materials.....	15
7.4	Transformer Build Diagram .....	15
7.5	Transformer Construction.....	16
8	Performance Data .....	17
8.1	Line and Load Regulation.....	17
8.2	Efficiency.....	18
8.3	No-Load Input Power .....	18
9	Waveforms .....	19
9.1	Drain Voltage and Current Waveforms.....	19
9.1.1	90 VAC, Normal Operation.....	19
9.1.2	265 VAC, Normal Operation.....	19
9.2	Output Voltage Start-up Profile.....	20
9.3	Load Transient Response (0.25 A to 0.5 A Load Step).....	20
9.4	Output Ripple Measurements.....	21
9.4.1	Ripple Measurement Technique .....	21
9.4.2	Output Voltage Ripple .....	22
9.5	Thermal Measurements .....	23
9.6	Conducted EMI.....	24
9.6.1	Optional Components With Artificial Hand .....	25
9.6.2	Optional Components Without Artificial Hand .....	25
9.6.3	Optional Components Removed With Artificial Hand.....	26
10	Appendix A – EP-16 Enclosure Opening Procedures .....	27
10.1	Method 1 - Non-destructive .....	27
10.2	Method 2 - Destructive .....	27
11	Appendix B – LNK520P in the High-Side Configuration .....	28
11.1	Introduction.....	28
11.2	Comparison of LNK501 and LNK520 .....	28
11.3	Circuit Changes.....	29
11.4	Performance Data .....	30
11.4.1	Line and Load Regulation .....	30
11.4.2	Efficiency.....	31

11.4.3 No-Load Input Power.....32  
11.5 EMI Performance.....33  
12 Revision History.....34

**Important Note:**

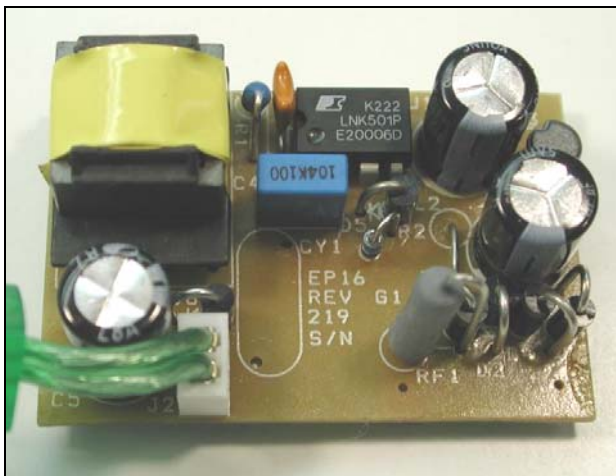
Although the EP-16 is designed to satisfy safety isolation requirements, this engineering prototype has not been agency approved. Therefore, all testing should be performed using an isolation transformer to provide the AC input to the prototype board.



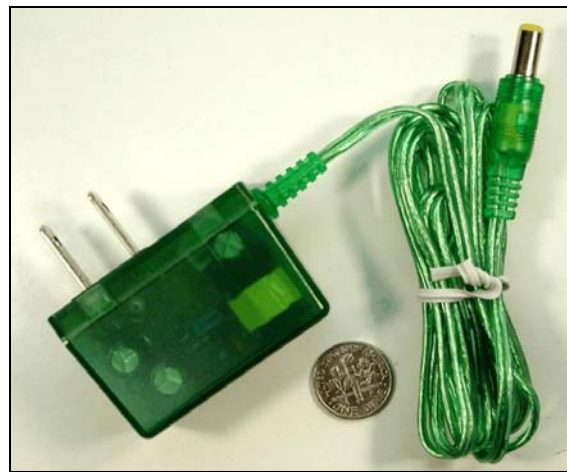
## 1 Introduction

This document is an engineering report giving performance characteristics of a 5.5 V, 500 mA charger/adapter. The charger uses *LinkSwitch* – an integrated IC combining a 700 V high voltage MOSFET, PWM controller, start-up, thermal shut down and fault protection circuitry. The controller provides both duty cycle and current limit control to yield a constant voltage/constant current output characteristic without secondary-side sensing. This power supply is designed to provide a cost effective replacement for linear transformer based chargers and adapters while providing the additional benefits of universal input range and high energy efficiency.

This document contains the power supply specification, schematic, bill of materials, transformer documentation, printed circuit board layout, and performance data.



**Figure 1** – EP-16 Populated Circuit Board.



**Figure 2** – EP-16 Assembled into Case with Cable (barrel -ve, tip +ve).

## 2 Power Supply Specification

Description	Symbol	Min	Typ	Max	Units	Comment
<b>Input</b>						
Voltage	$V_{IN}$	85		265	VAC	2 Wire – no Protective Ground
Frequency	$f_{LINE}$	47	50/60	64	Hz	
No-load Input Power (265 VAC)				0.3	W	
<b>Output</b>						
Output Voltage	$V_{OUT}$	5.0	5.5	6.0	V	At peak output power point Resistive load, peak power Battery load, peak power
Output Ripple Voltage (res. load)	$V_{RIPPLE R}$			300	mV	
Output Ripple Voltage (bat. load)	$V_{RIPPLE B}$			150	mV	
Output Current 1	$I_{OUT}$	400	500	600	mA	
<b>Total Output Power</b>						
Continuous Output Power	$P_{OUT}$	2	2.75	3.6	W	
<b>Efficiency</b>	$\eta$		71		%	Measured at output peak power point, 25 °C
<b>Environmental</b>						
1.2/50 Surge		2			kV	1.2/50 $\mu$ s surge, IEC 1000-4-5, 12 $\Omega$ series impedance, differential and common mode
100 kHz Ring Wave Surge		2			kV	100 kHz ring wave, 500 A short circuit current, differential and common mode
Ambient Temperature	$T_{AMB}$	0		40	°C	Free convection, sea level
Conducted EMI	Meets CISPR22B / EN55022B & FCC B with artificial hand connected to output return					
Safety	Designed to meet IEC950, UL1950 Class II					

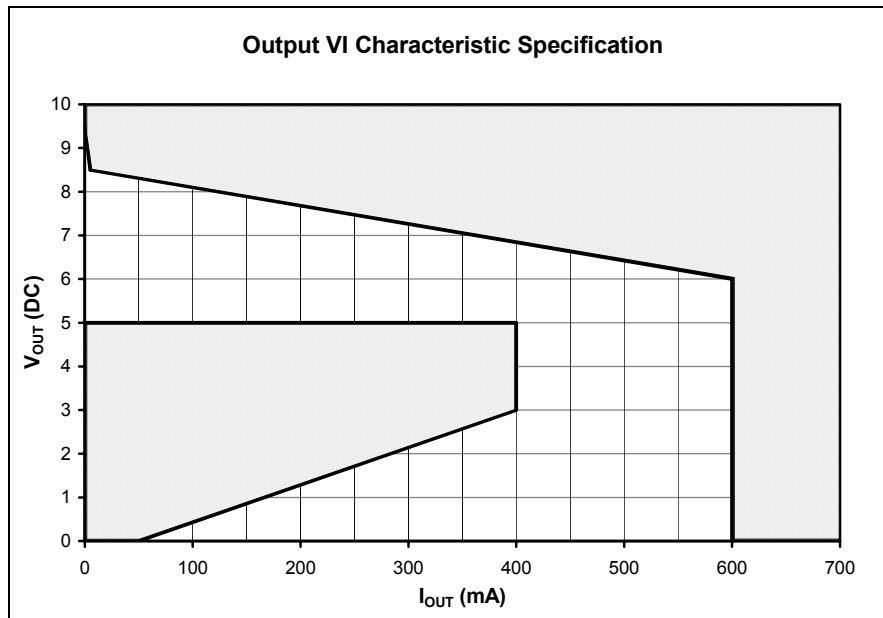


Figure 3 – EP-16 Output Characteristic Envelope.  
(Shading represents no-go areas.)



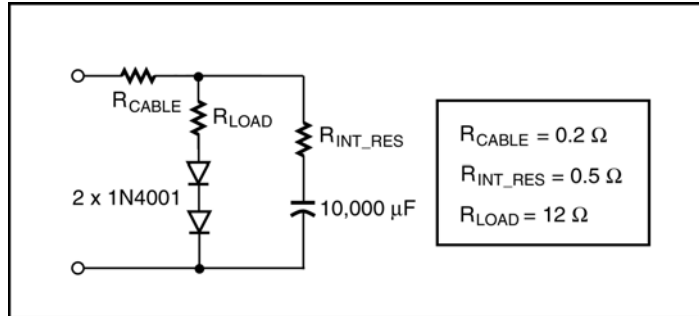
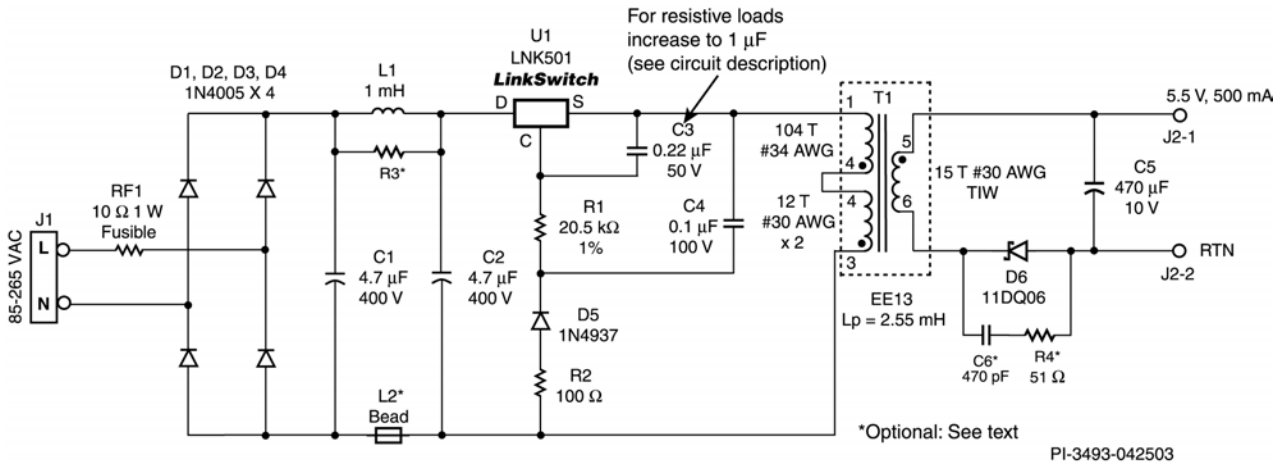


Figure 4 – Battery Model Used for Testing.

Note: EP-16 is designed for a battery load. If a resistive or electronic load is used the supply may fail to start up at full load. This is normal. To ensure startup into a resistive load, increase the value of C3 to 1  $\mu$ F (see circuit description for more information).

### 3 Schematic



**Figure 5** – EP-16 Low Cost, 2.75 W LinkSwitch Cell Phone Charger Schematic.

Optional components L2, C6 and R4 may be fitted to the board to improve radiated EMI. The effect of these components is shown in the “Conducted EMI Results” section of this document.

Optional component R3 may be fitted in place of L1 in applications where conducted EMI is filtered externally (e.g. in an embedded system). In this case a 0 Ω resistor or jumper should be used. In low power applications (less than approximately 1.5 W), a low value resistor may be used to provide sufficient conducted EMI filtering. A value in the range of 0 Ω to 10 Ω may be used.



## 4 Circuit Description

The schematic shown in Figure 5 provides a CV/CC (constant voltage/constant current) type output characteristic from a universal input voltage range of 85 VAC to 265 VAC. The nominal peak power point at the transition from CC to CV is 5.5 V at 500 mA. The precise output envelope specification is shown in Figure 3.

### 4.1 Input Stage

The incoming AC is rectified and filtered by D1-4, C1 and C2. Resistor RF1 is a flameproof fusible type to protect against fault conditions and is a requirement to meet safety agency fault testing. This component should be a wire wound type to withstand input current surges while the input capacitors charge on application of power or during withstand line-transient testing. Metal film type resistors are not recommended, they do not have the transient dissipation capabilities required and may fail prematurely in the field.

Lower values increase the resistor dissipation ( $V^2/R$  power term) during transients, increasing resistor stress, while higher values increase steady state dissipation ( $I^2R$  power term) and reduce efficiency.

If a suitable flame proof resistor cannot be found (during failure flame proof resistors do not emit flames, smoke or incandescent material that may damage transformer insulation), then a standard fusible type may be used as long as a protective heat shrink sleeve is placed over the resistor. Please consult with a safety engineer or local safety agency.

The value of C1 and C2 were selected to provide the smallest standard values to meet  $3 \mu\text{F}/\text{W}$ , in this case two  $4.7 \mu\text{F}$ , 400 V capacitors. Smaller values are possible (either  $2.2 \mu\text{F}$  or  $3.3 \mu\text{F}$ ) however, the lower DC rail voltage will increase *LinkSwitch* dissipation, lowering efficiency and increasing line frequency output ripple. Differential mode EMI (<500 kHz) also typically increases.

The input capacitance is split between C1 and C2 to allow an input  $\pi$  filter to be formed by L1. This filters noise associated with the supply to meet EN55022B / CISPR 22 B and FCC B conducted EMC limits, even when no Y safety capacitor is used.

Ferrite bead L2 is optional, fitted to improve radiated EMI.



## 4.2 *LinkSwitch* Operation

When power is applied to the supply, high voltage DC appears at the DRAIN pin of *LinkSwitch* (U1). The CONTROL pin capacitor C3 is then charged through a switched high voltage current source connected internally between the DRAIN and CONTROL pins. When the CONTROL pin voltage reaches approximately 5.7 V relative to the SOURCE pin, the internal current source is turned off. The internal control circuitry is activated and the high voltage internal MOSFET starts to switch, using the energy in C3 to power the IC.

As the current ramps in the primary of flyback transformer T1, energy is stored. This energy is delivered to the output when the MOSFET turns off each cycle.

The secondary of the transformer is rectified and filtered by D6 and C5 to provide the DC output to the load.

Control of the output characteristic is entirely sensed from the primary-side by monitoring the primary-side  $V_{OR}$  (voltage output reflected). While the output diode is conducting, the voltage across the transformer primary is equal to the output voltage plus diode drop multiplied by the turns ratio of the transformer. Since the *LinkSwitch* is connected on the high side of the transformer, the  $V_{OR}$  can be sensed directly.

Diode D5 and capacitor C4 form the primary clamp network. The voltage held across C4 is essentially the  $V_{OR}$  with an error due to the parasitic leakage inductance.

The *LinkSwitch* has three operating modes determined by the current flowing into the CONTROL pin.

During start-up, as the output voltage, and therefore the reflected voltage and voltage across C4 increases, the feedback current increases from 0 to approximately 2 mA through R1 into the CONTROL pin. The internal current limit is increased during this period until reaching 100%, providing an approximately constant output current.

Once the output voltage reaches the regulated CV value, the output voltage is regulated through control of the duty cycle. As the current into the CONTROL pin exceeds approximately 2 mA, the duty cycle begins to reduce, reaching 30% at a CONTROL pin current of 2.3 mA.

If the duty cycle reaches a 3% threshold, the switching frequency is reduced, which reduces energy consumption under light or no load conditions.

As the output load increases beyond the peak power point (defined by  $\frac{1}{2} \cdot L \cdot I^2 \cdot f$ ) and the output voltage and  $V_{OR}$  falls, the reduced CONTROL pin current will lower the internal current providing an approximately constant current output characteristic. If the output load is further increased and the output voltage falls further to below a CONTROL pin current of 1 mA, the CONTROL pin capacitor C3 will discharge and the supply will enter auto-restart.



### 4.3 Transformer

The transformer is designed to always be discontinuous; all the energy is transferred to the load during the MOSFET off time. The energy stored in the transformer during discontinuous mode operation is  $\frac{1}{2} \cdot L \cdot I^2 \cdot f$ , where L is the primary inductance,  $I^2$  is the peak primary current squared and f is the switching frequency.

Since the value of *LinkSwitch* current limit and frequency directly determines the peak power or CV/CC transition point in the output characteristic, the parameter of current squared times frequency is defined in the datasheet. This parameter, together with the output power, is used to specify the transformer primary inductance. With a primary inductance tolerance of  $\pm 10\%$ , the EP-16 is designed to provide the output current characteristic shown in Figure 3\*.

As *LinkSwitch* is powered by the energy stored in the leakage inductance of the transformer, only a low cost two winding transformer is required. Leakage inductance should be kept low, ideally at less than 2% of the primary inductance. High leakage inductance will cause the CC characteristic to walk out as the output voltage decreases and increases the no-load consumption of the supply.

With a figure of 50  $\mu\text{H}$  for leakage, this design is able to meet a voltage tolerance of  $\pm 10\%$  at the peak power point, including the effects of output cable drop. For tighter voltage tolerance across the whole load range, a secondary optocoupler can be added. For most battery charging applications, only the voltage at the peak power point is critical, thus ensuring sufficient voltage for charging.

### 4.4 Clamp and Feedback Components

Diode D5 should either be a fast ( $t_{rr} < 250 \text{ ns}$ ) or ultra-fast type to prevent the voltage across *LinkSwitch* from reversing and ringing below ground. A fast diode is preferred, being lower cost. Leakage inductance is filtered by R2, the optimum value providing the straightest CC characteristic.

Capacitor C4 is typically fixed at 0.1  $\mu\text{F}$  and should be rated above the  $V_{OR}$  and be stable with both temperature and applied voltage. Low-cost, metalized plastic film capacitors are ideal; high value, low-cost ceramic capacitors are not recommended. Dielectrics used for these capacitors such as Z5U and Y5U are not stable and can cause output instability as their value changes with voltage and temperature. Stable dielectrics such as COG/NPO are acceptable but are costly when compared to a metalized plastic film capacitor.

---

\* This includes *LinkSwitch* tolerance and line variation.



R1 was selected to program the peak power point to be 500 mA when a transformer with a nominal  $L_P$  value was used. Initial values are selected using the expression (from Power Integrations Application note, AN-35):

$$\begin{aligned} R1 &\cong (V_{FB} - V_{C(IDCT)}) / I_{DCT} \\ &\cong (54.1 - 5.75) / 2.3 \text{ mA} \\ &\cong 21 \text{ k}\Omega \end{aligned}$$

The closest standard 1% series value of 20.5 k $\Omega$  was selected. See AN-35 for a more detailed explanation of clamp and feedback component selection.

C3 sets the auto-restart period and also the time the output has to reach regulation before entering auto-restart from start-up. If a battery load is used then a value of 0.22  $\mu$ F is typical. *However, if the supply is required to start into a resistive load then this should be increased to 1  $\mu$ F to ensure enough time during start-up to bring the output into regulation.* The type of capacitor is not critical; either a small ceramic or electrolytic may be used with a voltage rating of 10 V or more.

#### 4.5 Output Stage

Diode D6 should be rated for 80% of applied reverse voltage and thermally for average current multiplied by forward voltage at maximum ambient. Here a 1 A, 60 V Schottky diode was used to reduce the losses and improve efficiency, although fast or ultra-fast PN diodes are acceptable.

A snubber formed by C6 and R4 may be fitted across D6 to improve radiated EMI performance.

Capacitor C5 should be rated for output voltage and ripple current. Depending on the application, the designer may choose not to derate for ripple current. If the application is battery charging of equipment such as PDAs or cell phones, the duty cycle of operation at high ripple current is likely to be low, perhaps only 1 hour per day. In this case the capacitor temperature can be allowed to rise significantly during charging without concern for the overall capacitor lifetime.



### 5 PCB Layout

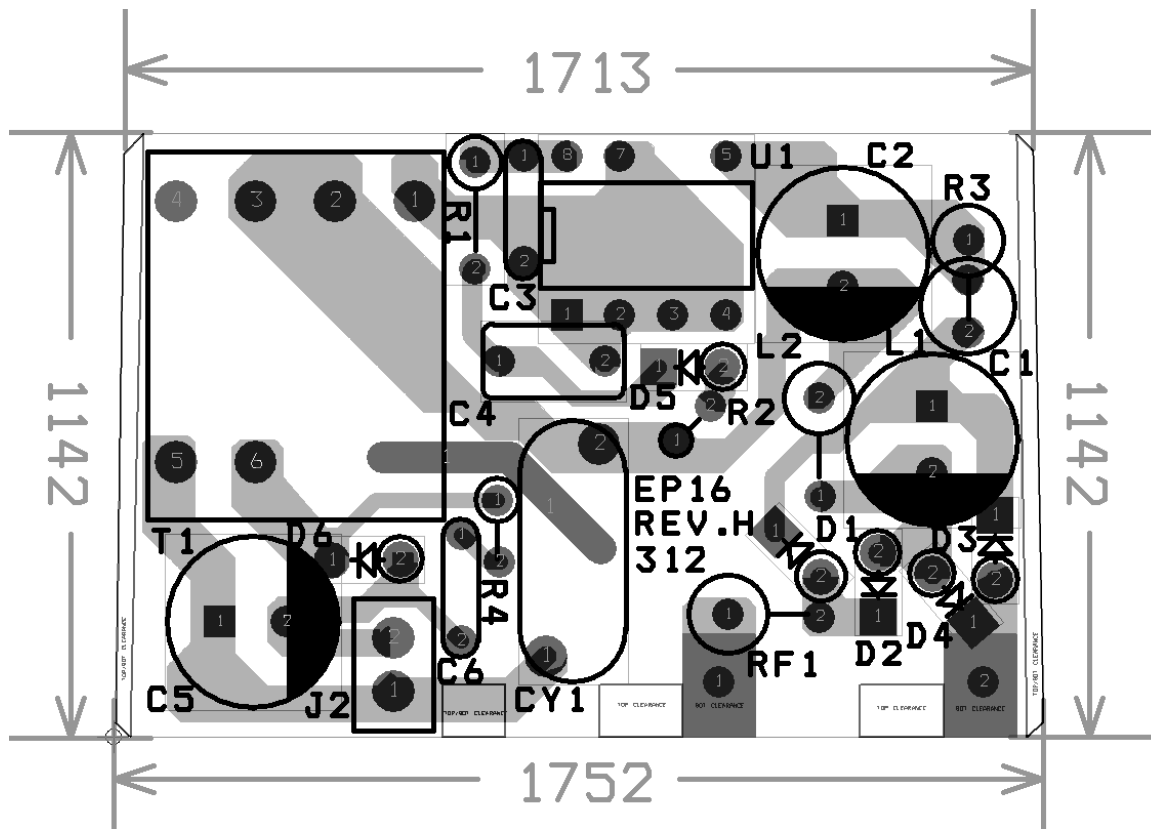


Figure 5 – EP-16 Printed Circuit Board Layout and Dimensions (0.001 inches).

## 6 Bill Of Materials

Item	Quantity	Reference	Part Description
1	2	C1, C2	4.7 $\mu$ F, 380 V, UCC part # 380VB4R7M8X11L
2	1	C3	0.22 $\mu$ F, 50 V, Ceramic
3	1	C4	0.1 $\mu$ F, 5%, 100 V, Metallized Film – Panasonic part # ECQ-V1104JM
4	1	C5	470 $\mu$ F, 10 V, Low ESR Panasonic FC Series
5	1	C6	470 pF, 100 V
6	4	D1, D2, D3, D4	1N4005, 1 A, 600 V
7	1	D5	1N4937, 1 A, 600 V, Fast Rectifier
8	1	D6	11DQ06, 1 A, 60 V, Schottky
9	1	L1	1 mH Inductor - Tokin part # SBCP-47HY102B
10	0	JP1	Wire Jumper – Not fitted
11	1	L2	Ferrite Bead – Fair-rite 2761008112
12	1	RF1	10 $\Omega$ , 2 W, Fusible – Vitrohm 253-4 series
13	1	R2	100 $\Omega$ , 5%, 1/8 W
14	1	R1	20.5 k $\Omega$ , 1%, 1/4 W
15	1	R4	51 $\Omega$ , 5%, 1/4 W
16	1	T1	Custom EE13 – HiCal part # SIL6011
17	1	U1	LNK501P – Power Integrations, Inc
18	1	R3	Not fitted



## 7 Transformer

### 7.1 Transformer Winding

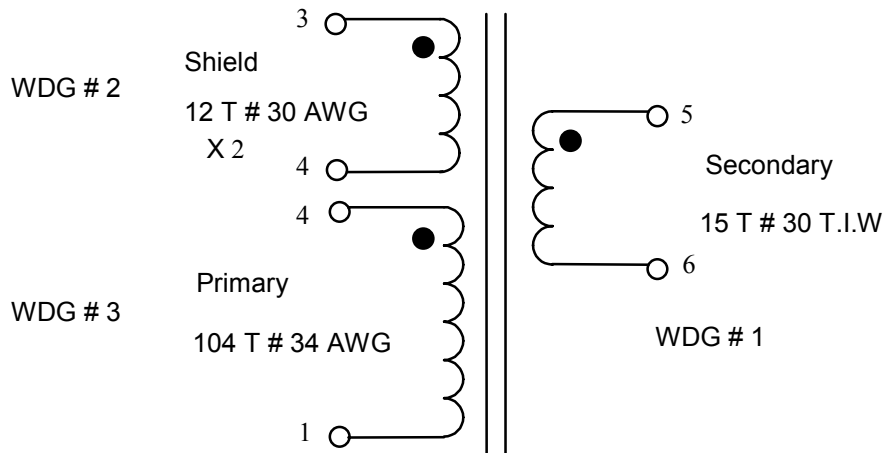


Figure 6 – Transformer Winding Diagram.

### 7.2 Electrical Specifications

<b>Electrical Strength</b>	60 Hz 1 min, from Pins 1-3 to Pins 5-6	3000 VAC
<b>Primary Inductance (Pin 1 to Pin 3)</b>	All windings open	2.55 mH $\pm$ 10% at 42 kHz
<b>Resonant Frequency</b>	All windings open	300 kHz (Min.)
<b>Primary Leakage Inductance (Pin 1 to Pin 4)</b>	Pins 5-6 shorted	50 $\mu$ H (Max.)

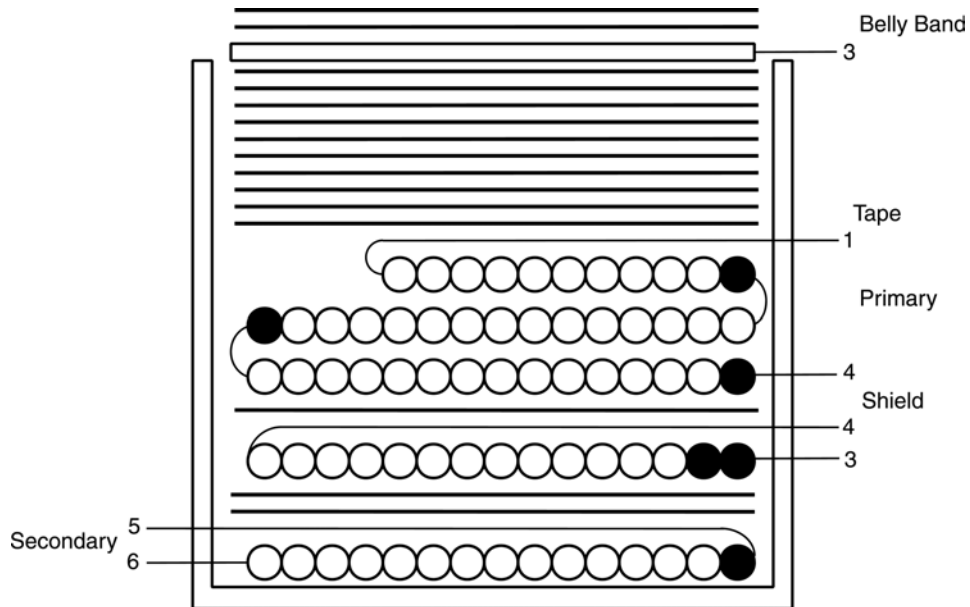
**7.3 Materials**

Item	Description
[1]	Core: EE13, PC40EE13, TDK – ALG 190 nH/t <sup>2</sup>
[2]	Bobbin: Horizontal 8pin – pins 7 and 8 removed
[3]	Magnet Wire: #34 AWG
[4]	Magnet Wire: #30 AWG
[5]	Triple Insulated Wire: #30 AWG.
[6]	Tape: 3M 1298 Polyester Film (white) 320mils wide by 2.2 mils thick
[7]	Tape: 3M 1298 Polyester Film (white) 290mils wide by 2.2 mils thick
[8]	Glue AV118
[9]	Copper tape 6mm +/- 0.15 mm wide by 0.076 mm thick

**Design Notes:**

Power Integrations Device	LNK501
Frequency of Operation	42 kHz
Mode	Discontinuous
Peak Current	0.263 A
Reflected Voltage (Secondary to Primary)	48 V
Maximum DC Input Voltage	370 V
Minimum DC Input Voltage	90 V

**7.4 Transformer Build Diagram**



**Figure 7 – EP-16 Transformer Build Diagram.**



## 7.5 Transformer Construction

<b>Secondary Winding</b>	Start at Pin 4 temporarily. Wind 15 turns of item [5] from right to left with tight tension. Wind uniformly, in a single layer across entire width of bobbin. Finish on Pin 6.
<b>Basic Insulation</b>	1 Layer of tape [6] for insulation.
<b>Secondary Winding</b>	Change the start pin connection of secondary winding from Pin 4 to Pin 5.
<b>Basic Insulation</b>	1 Layer of tape [6] for insulation.
<b>Cancellation Winding</b>	Start at Pin 3. Wind 12 turns of bifilar item [4] from right to left with tight tension. Wind uniformly, in a single layer, across entire width of bobbin. Finish on Pin 4.
<b>Basic Insulation</b>	1 Layer of tape [6] for insulation.
<b>Primary Winding 2 2/3 Layer</b>	Start at Pin 4. Wind 104 turns of item [3] from right to left in 2 and 2/3 layers across entire width of bobbin. Wind all layers with tight tension. Finish on Pin 1.
<b>Outer Insulation</b>	10 Layer of tape [7] for insulation.
<b>Core Assembly</b>	Assemble and secure core halves using item [8]
<b>Flux / Belly band</b>	Place item [9] around outside of windings and core halves with tight tension. Make electrical connection to band from pin 3 using item [4].
<b>Basic Insulation</b>	2 layers of tape [6] for insulation.
<b>Crop Unused Pins</b>	Remove pins 7 and 8

*Note: The transformer is an integral part of the EMI performance of this design. Changes to the transformer may have significant impact on both conducted and radiated EMI.*





## 8 Performance Data

All measurements were performed at room temperature, 60 Hz input frequency unless otherwise specified. The output voltage was measured at the end of the output cable. Efficiency results therefore include output cable losses.

Input power measurements were taken using a Yokogawa WT200 Single Phase Digital Power Meter. For the no-load measurement, the current scale was set to 10 mA.

### 8.1 Line and Load Regulation

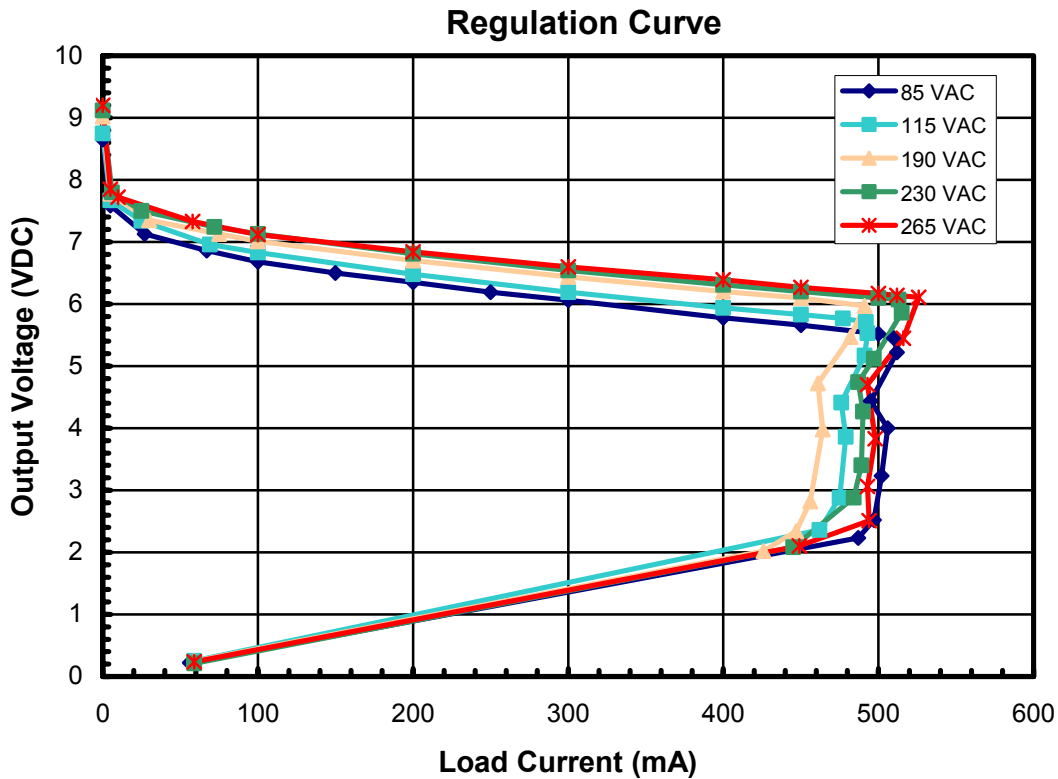


Figure 8 – Load Regulation at Selected Input Voltages.



### 8.2 Efficiency

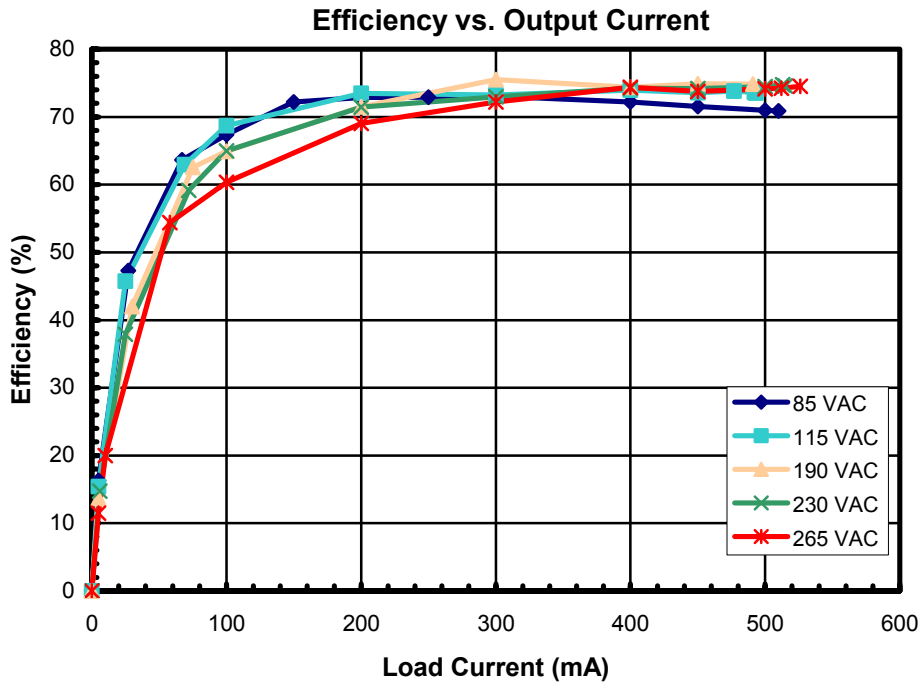


Figure 9 – Efficiency vs. Output Current at Selected Input Voltages.

### 8.3 No-Load Input Power

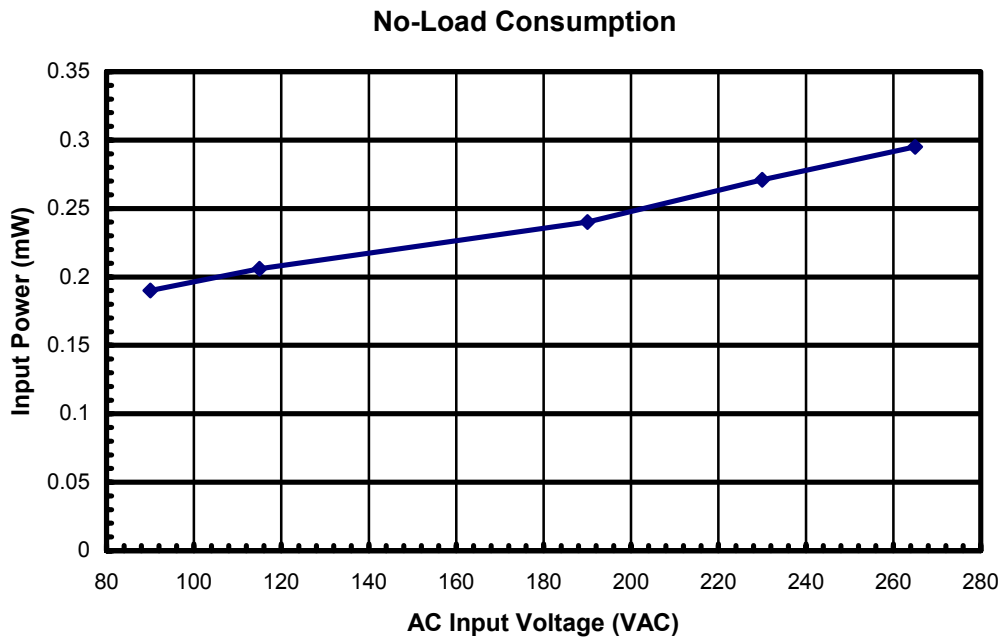


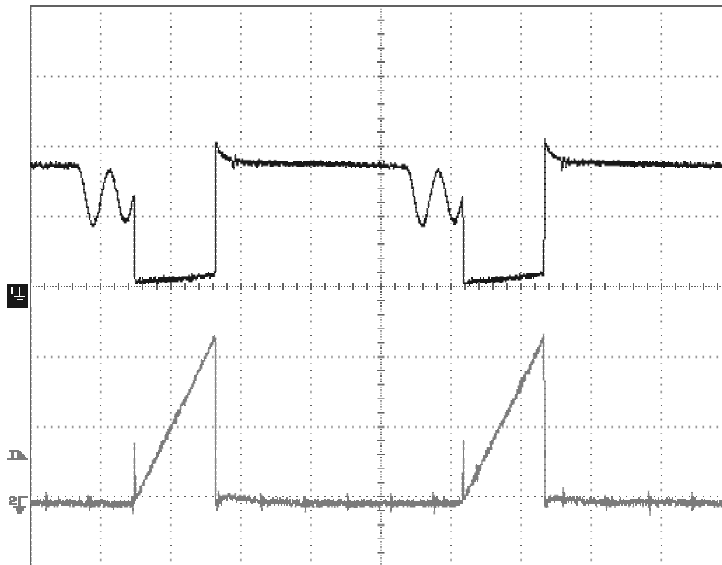
Figure 10 – Zero Load Input Power vs. Input Line Voltage.



## 9 Waveforms

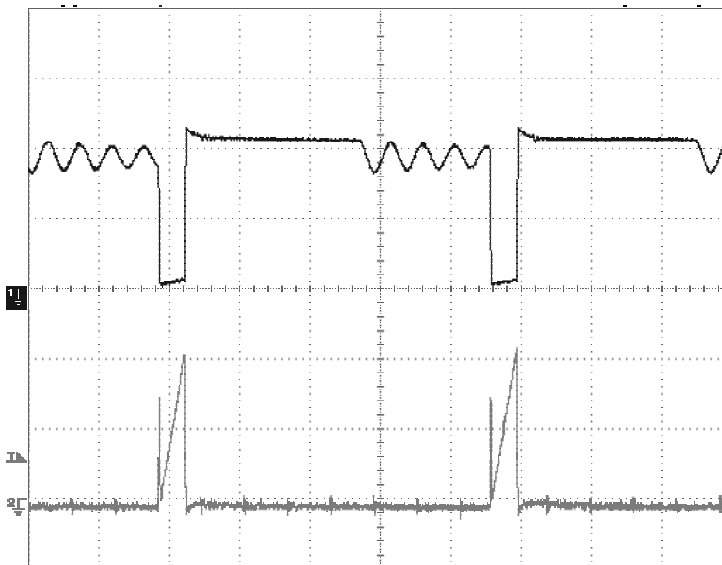
### 9.1 Drain Voltage and Current Waveforms

#### 9.1.1 90 VAC, Normal Operation



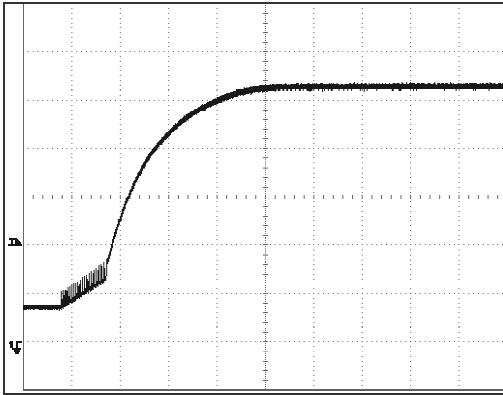
**Figure 11** – LinkSwitch (U1)  $V_{DRAIN}$  and  $I_{DRAIN}$  Waveforms  
 $V_{IN} = 90$  VAC,  $I_O = 500$  mA.  
 Ch.1: LinkSwitch Drain-Source Voltage (100 V/div).  
 Ch.3: LinkSwitch Drain-Source Current (0.1 A/div).

#### 9.1.2 265 VAC, Normal Operation

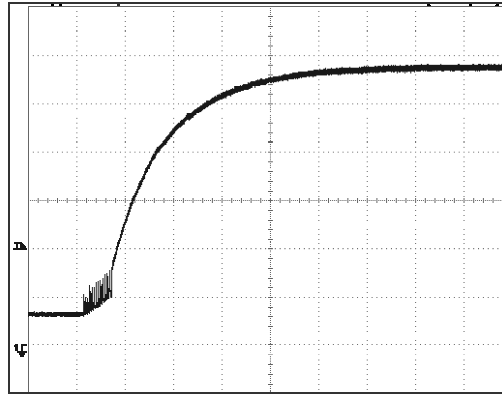


**Figure 12** – LinkSwitch (U1)  $V_{DRAIN}$  and  $I_{DRAIN}$  Waveforms  
 $V_{IN} = 265$  VAC,  $I_O = 500$  mA.  
 Ch.1: LinkSwitch Drain-Source Voltage (100 V/div).  
 Ch.3: LinkSwitch Drain-Source Current (0.1 A/div).

**9.2 Output Voltage Start-up Profile**

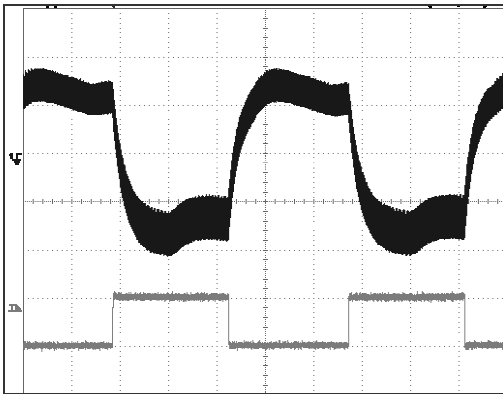


**Figure 13** – Output Voltage at Start-up, Battery Model,  $V_{IN} = 90 \text{ VAC}$ ,  $P_{OUT\_MAX}$ .

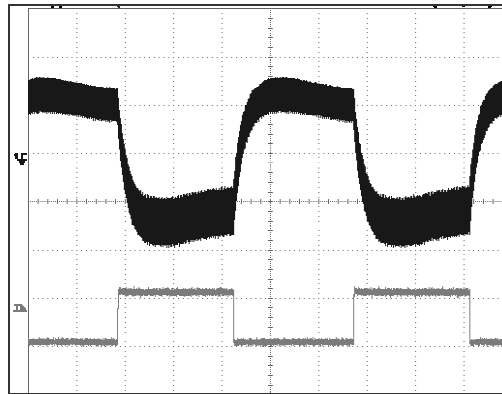


**Figure 14** – Output Voltage at Start-up, Battery Model,  $V_{IN} = 265 \text{ VAC}$ ,  $P_{OUT\_MAX}$ .

**9.3 Load Transient Response (0.25 A to 0.5 A Load Step)**



**Figure 15** – Dynamic Load Transient 0.25 A to 0.5 A step at  $V_{IN} = 90 \text{ VAC}$ . Ch.3: Output Voltage (500 mV/div).



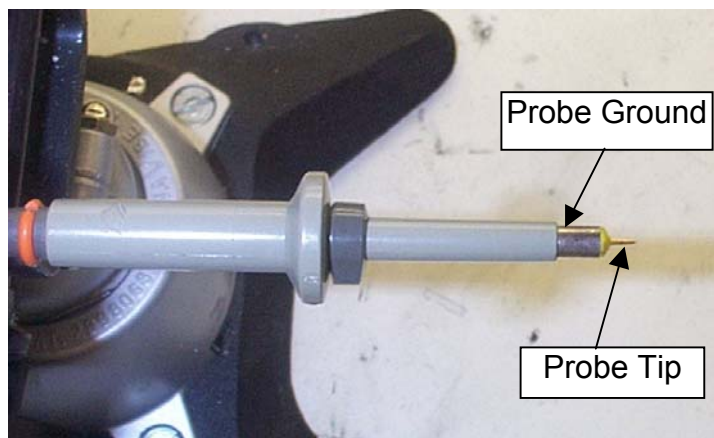
**Figure 16** – Dynamic Load Transient 0.25 A to 0.5 A step at  $V_{IN} = 265 \text{ VAC}$ . Ch.3: Output Voltage (500 mV/div).

## 9.4 Output Ripple Measurements

### 9.4.1 Ripple Measurement Technique

For DC output ripple measurements, a modified oscilloscope test probe must be utilized in order to reduce spurious signals due to pickup. Details of the probe modification are provided in Figure 17 and Figure 18.

The 5125BA probe adapter is affixed with two capacitors tied in parallel across the probe tip. The capacitors include one (1) 0.1  $\mu\text{F}/50\text{ V}$  ceramic type and one (1) 1.0  $\mu\text{F}/50\text{ V}$  aluminum electrolytic.



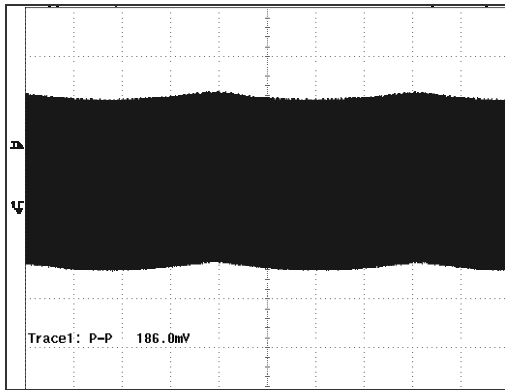
**Figure 17** – Oscilloscope Probe Prepared for Ripple Measurement.  
(End cap and ground lead removed).



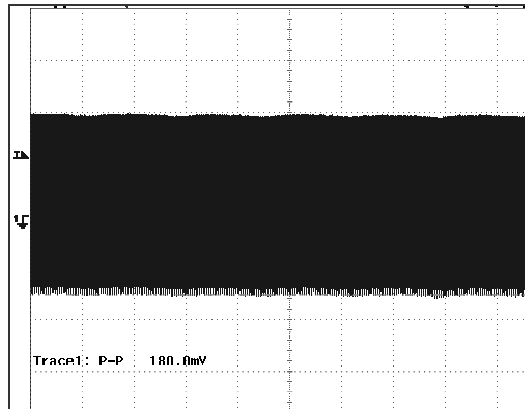
**Figure 18** – Oscilloscope Probe with Probe Master 5125BA BNC Adapter.  
(Modified with wires for probe ground for ripple measurement and two parallel decoupling capacitors added).

### 9.4.2 Output Voltage Ripple

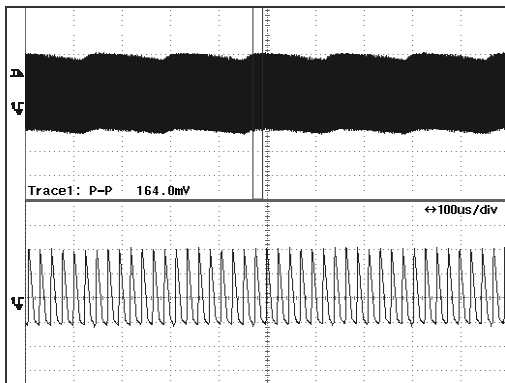
Measurements are shown for both resistive and battery model loads (Figure 4).



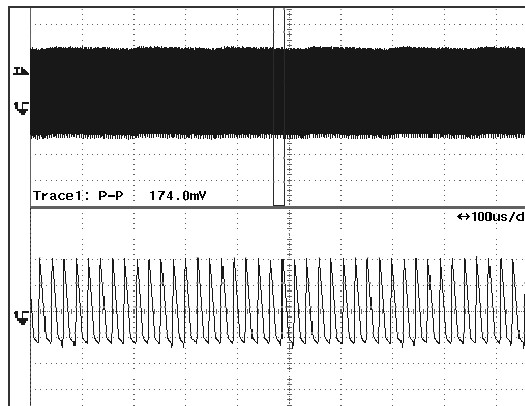
**Figure 19** – Output Voltage Ripple (Resistive) at  $V_{IN} = 115 \text{ VAC}$ ,  $V_O = 5.2 \text{ V}$ ,  $I_O = 500 \text{ mA}$  (Scale: 100 mV/div).



**Figure 20** – Output Voltage Ripple (Resistive) at  $V_{IN} = 230 \text{ VAC}$ ,  $V_O = 5.3 \text{ V}$ ,  $I_O = 515 \text{ mA}$  (Scale: 100 mV/div).



**Figure 21** – Output Voltage Ripple (Battery) at  $V_{IN} = 115 \text{ VAC}$ ,  $V_O = 5.2 \text{ V}$ ,  $I_O = 500 \text{ mA}$  (Scale: 100 mV, 5 ms, 100  $\mu\text{s}$  / div).



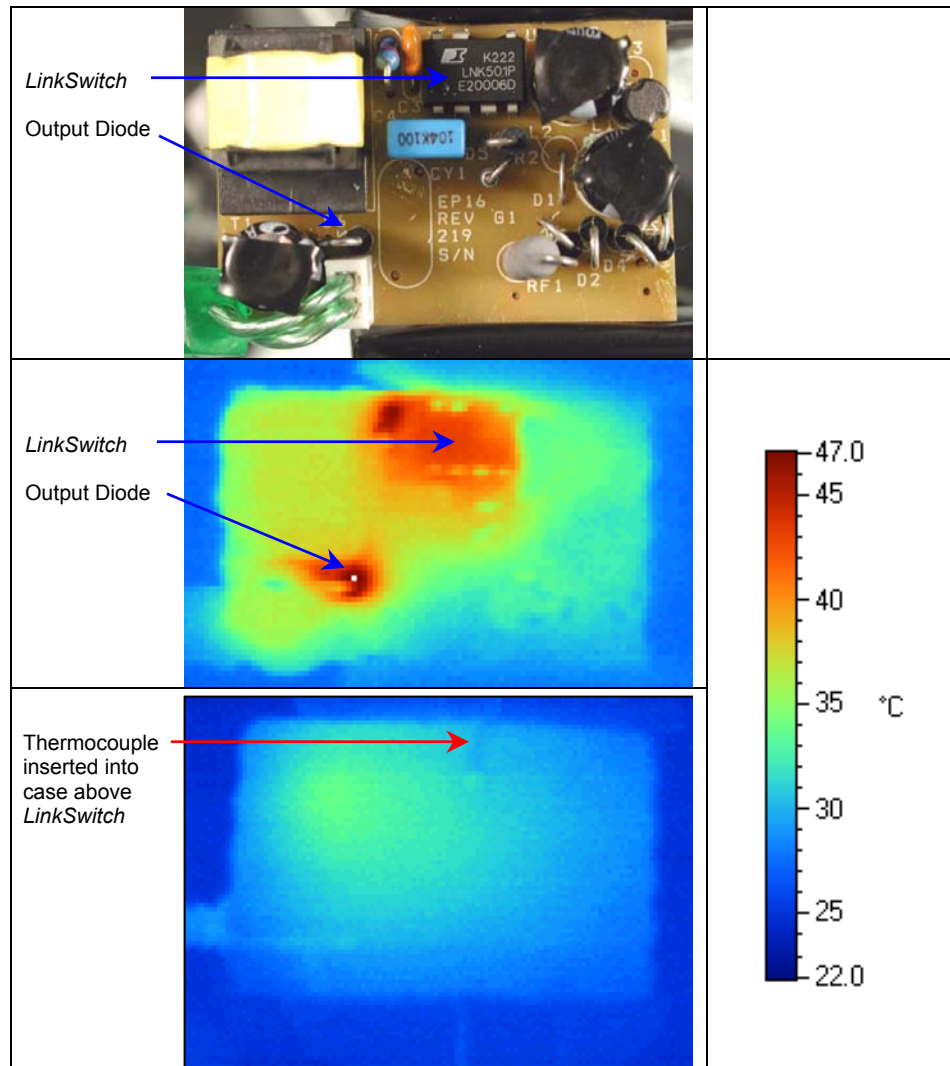
**Figure 22** – Output Voltage Ripple (Battery) at  $V_{IN} = 230 \text{ VAC}$ ,  $V_O = 5.3 \text{ V}$ ,  $I_O = 500 \text{ mA}$  (Scale: 100 mV, 5 ms, 100  $\mu\text{s}$  / div).

**9.5 Thermal Measurements**

Figure 23 shows two thermal image photographs with a visual photograph as a reference. With the board in free air, the first thermal image shows the hottest components were *LinkSwitch* and the output diode, reaching 47 °C with an external ambient of 22 °C.

When in the case, the internal ambient was measured by inserting a thermocouple into the case (just visible in the lower image). Running the unit for 12 hours at 85 VAC input and peak power output, the maximum internal ambient was 37 °C. This is confirmed by the lower thermal image, which recorded a similar case temperature.

This additional 13 °C rise gives a device and diode temperature of 60 °C at 22 °C ambient and 75 °C at 50 °C ambient, both very acceptable results.



**Figure 23** - Thermal Image Measurements of Board and Sealed Adapter, 85 VAC Input, 5.3 V, 500 mA Output, 22 °C External Ambient



### **9.6 Conducted EMI**

All measurements were taken at the peak output power point with a line voltage of 230 VAC. This line voltage represents the worst case; results are lower at 115 VAC. Limits shown are for EN55022B / CISPR22B

Final measurements were taken in all cases, representing the worst case of both phase and indicated as either "X" on quasi peak results or "+" on average results.

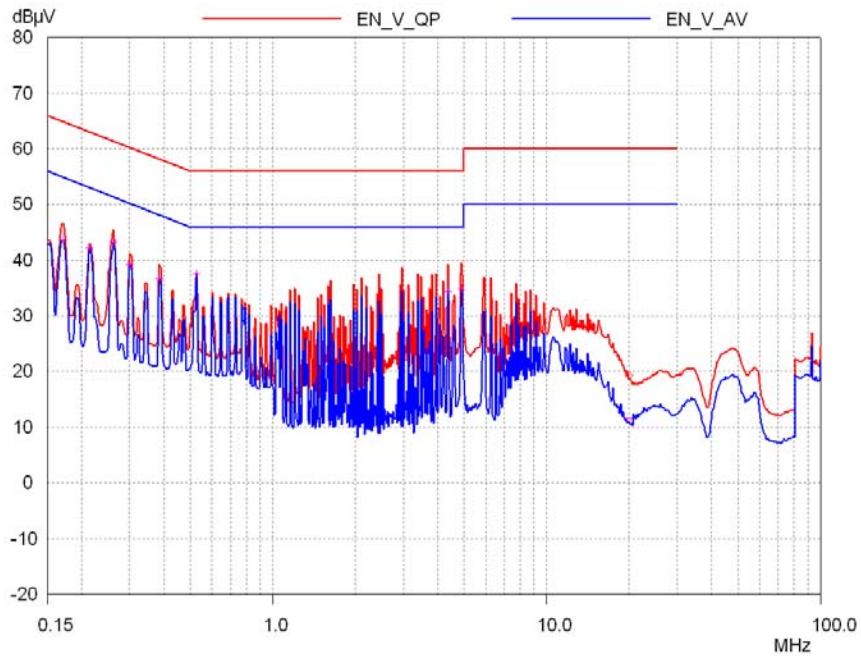
Results with and without the optional components L2, R4 and C6 are shown to illustrate the improvement in radiated EMI (50 MHz to 60 MHz region).

In all cases, a 10 dB or greater margin was obtained.



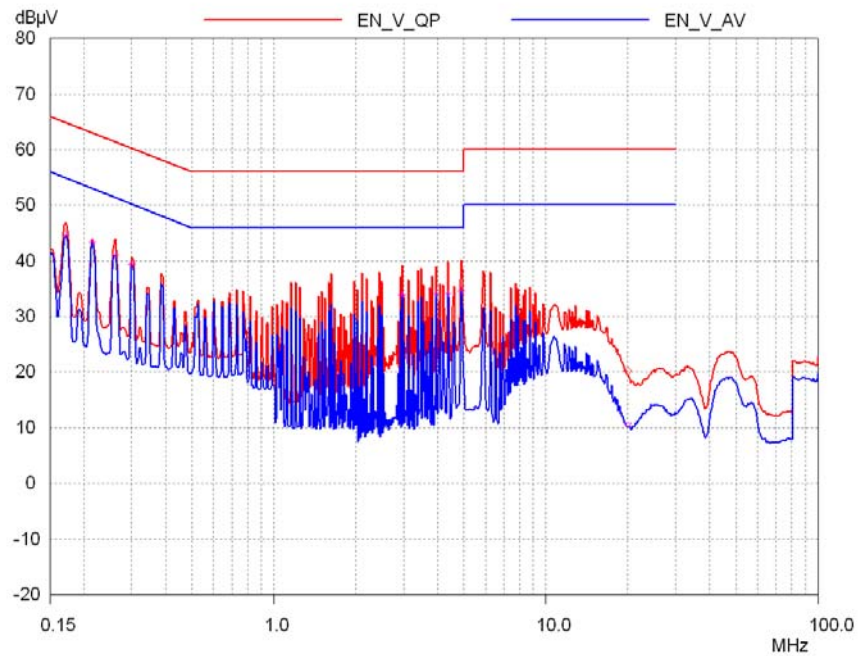


9.6.1 Optional Components With Artificial Hand



**Figure 24** – EN55022 B / CISPR22 B,  $V_{IN} = 230$  VAC, 60 Hz Line, Peak Power Point, Output Return Connected to Artificial Hand Input on LISN.

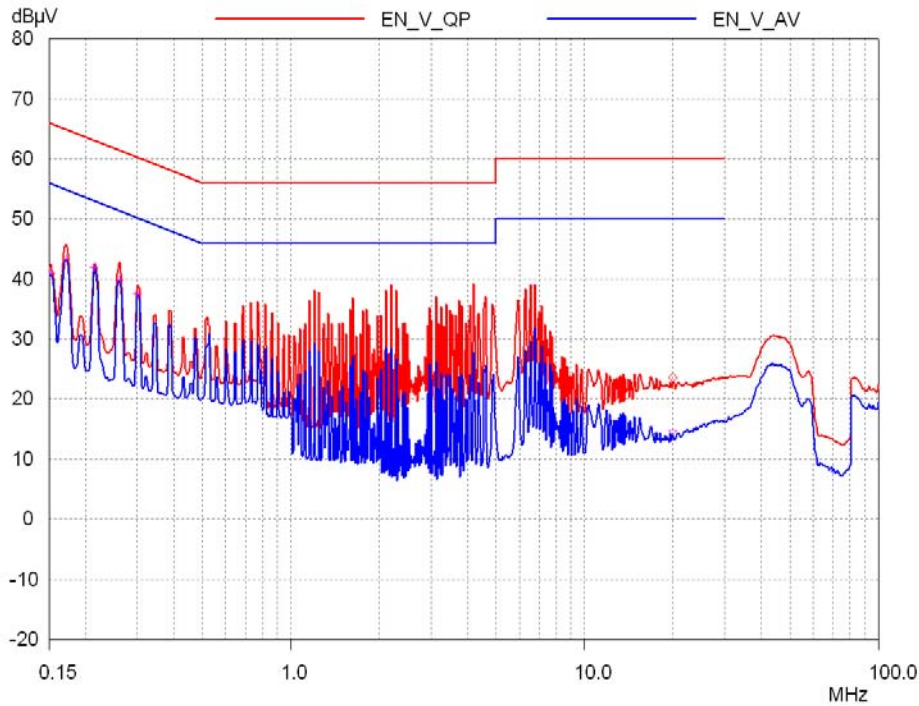
9.6.2 Optional Components Without Artificial Hand



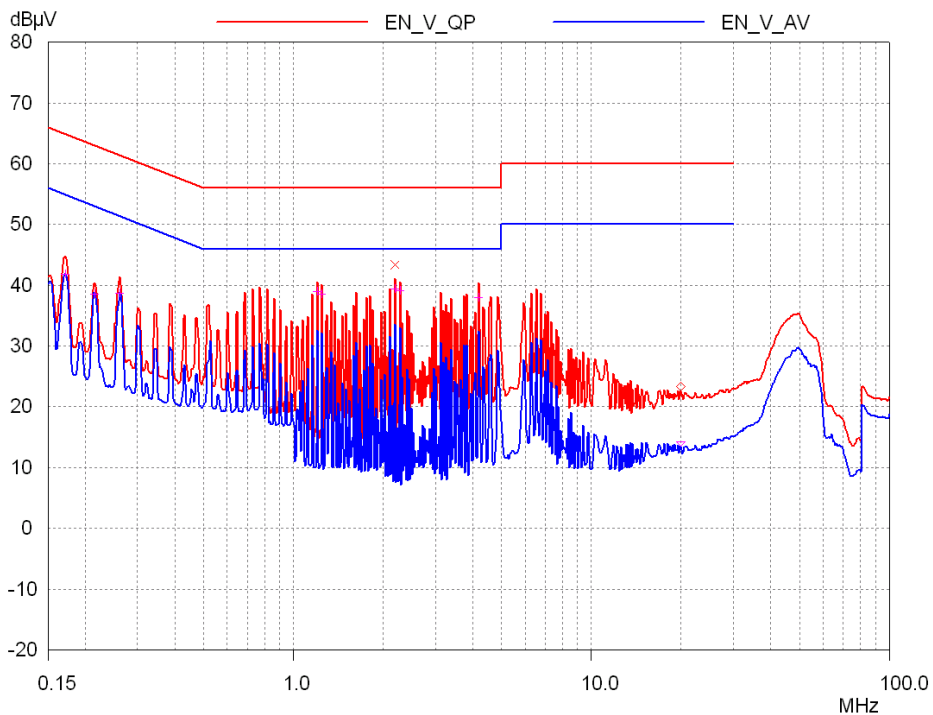
**Figure 25** – EN55022 B / CISPR22 B,  $V_{IN} = 230$  VAC, 60 Hz Line, Peak Power Point, Output Floating.



9.6.3 Optional Components Removed With Artificial Hand



**Figure 26** - EN55022 B / CISPR22 B,  $V_{IN} = 230$  VAC, 60 Hz Line, Peak Power Point, Output Return Connected to Artificial Hand Input on LISN.



**Figure 27** - EN55022 B / CISPR22 B,  $V_{IN} = 230$  VAC, 60 Hz Line, Peak Power Point, Output Return Floating.

## 10 Appendix A – EP-16 Enclosure Opening Procedures

### 10.1 Method 1 - Non-destructive

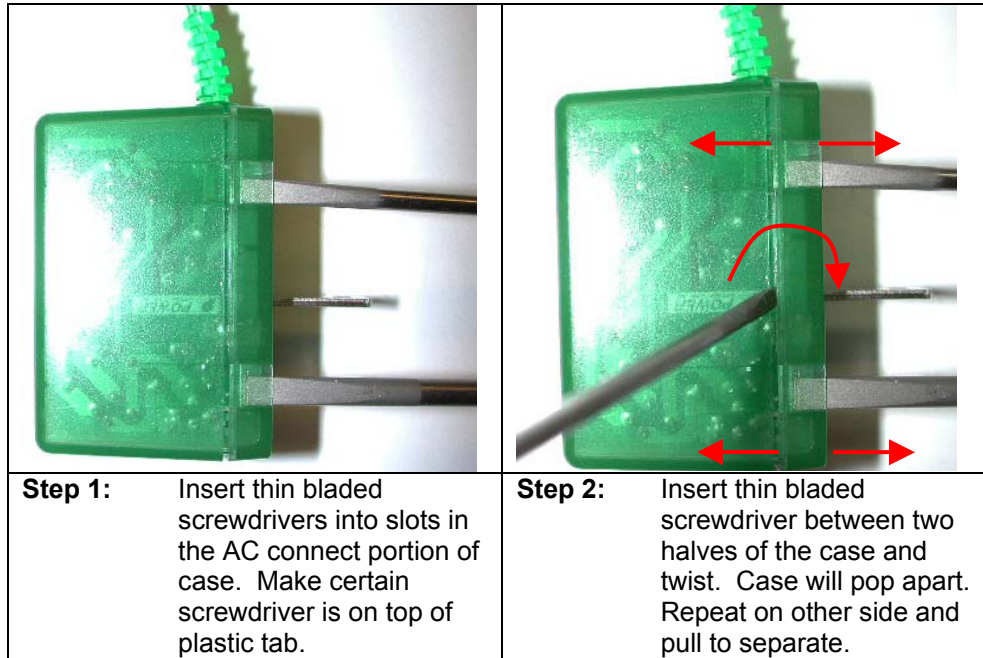


Figure 28 – Non-destructive Opening of EP-16 Case.

### 10.2 Method 2 - Destructive

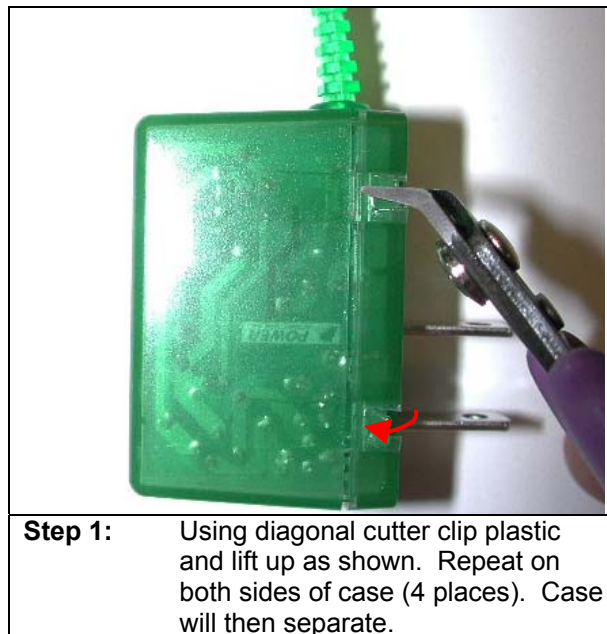


Figure 29 - Destructive Opening of EP-16 Case.

## 11 Appendix B – LNK520P in the High-Side Configuration

### 11.1 Introduction

In applications with looser CV/CC limits, the lower cost *LinkSwitch* LNK520P can be used in the high-side configuration, which may be attractive since the internal MOSFET drive has been optimized, typically reducing radiated EMI by 6 dB to 10 dB. This appendix details the changes necessary to replace U1 from a LNK501 to a LNK520 device. In addition, resultant changes in the output characteristic, efficiency, no-load consumption and radiated EMI are presented.

### 11.2 Comparison of LNK501 and LNK520

The LNK501 was designed for use in a high-side configuration, using the  $V_{OR}$  across the primary winding to provide output sensing and feedback. Since the feedback signals differ, the internal control characteristics of the LNK501/LNK520 have therefore been specifically optimized for high-side/low-side operation, respectively. The LNK520 was designed for use in a low-side configuration, using an auxiliary or bias winding to sense the output and provide feedback. In addition, the LNK520 has a wider  $I^2t$  data sheet tolerance than the LNK501.

When using the LNK520 device in the high-side configuration, the output voltage tends to be higher at no-load and the CC region of the output characteristic is less linear, the output current increasing as the output voltage reduces. The wider  $I^2t$  specification of the LNK520 increases the CC tolerance from approximately  $\pm 20\%$  to at least  $\pm 25\%$ .

In many applications, for example replacing a linear supply, the wider output tolerances and linearity are acceptable.

The LNK520 has one key advantage over the LNK501. The internal MOSFET drive has been optimized to reduce high frequency radiated EMI. Typically a 6 dB to 10 dB improvement in radiated (>30 MHz) EMI performance is seen compared with the LNK501.



### 11.3 Circuit Changes

All components other than those listed below, including the transformer, are identical to the original EP-16 design. The modified EP-16 schematic is shown in Figure 30.

- U1 LNK501P replaced with LNK520P.
- R1 20.5 k $\Omega$  to 16.2 k $\Omega$ .  
Reduced feedback resistor value to correct for increased value of R2 (reduces no-load voltage).
- R2 100  $\Omega$  to 430  $\Omega$ .  
Increased leakage filtering to ensure supply enters auto-restart when output voltage is below 2 V in CC region.

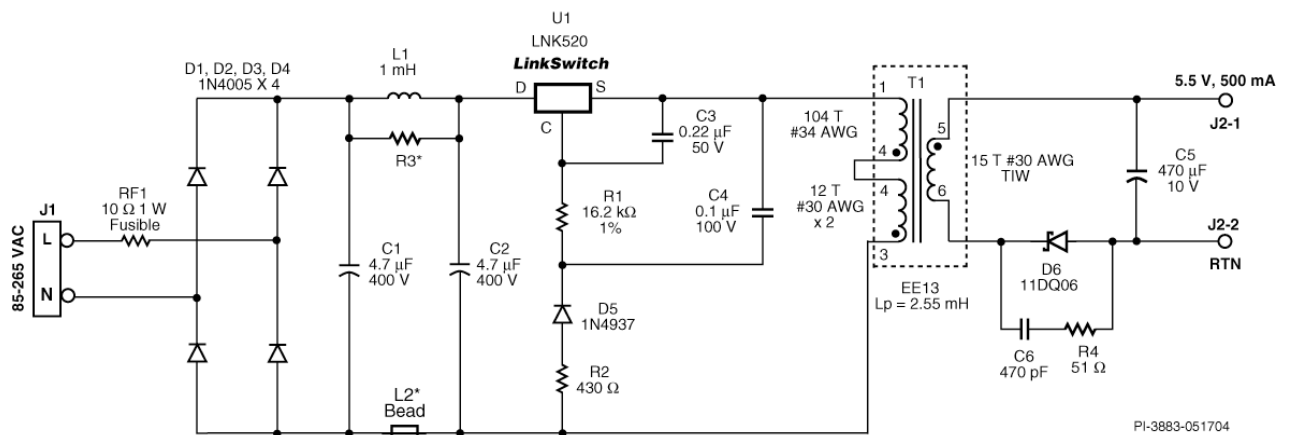


Figure 30 – Modified EP-16: Low Cost, 2.75 W Cell Phone Charger Using the LNK520P.

### 11.4 Performance Data

#### 11.4.1 Line and Load Regulation

The existing limits for the EP-16 (LNK501) design are shown for reference. Key differences to note are the higher no-load voltage, lower voltage at the peak power point and the increase in the output current as the voltage falls in the CC region.

The lower voltage at the peak power point has the additional effect of increasing the current at the power point. This could be adjusted by increasing the feedback resistor R1, which would also increase the no-load voltage and no-load input power.

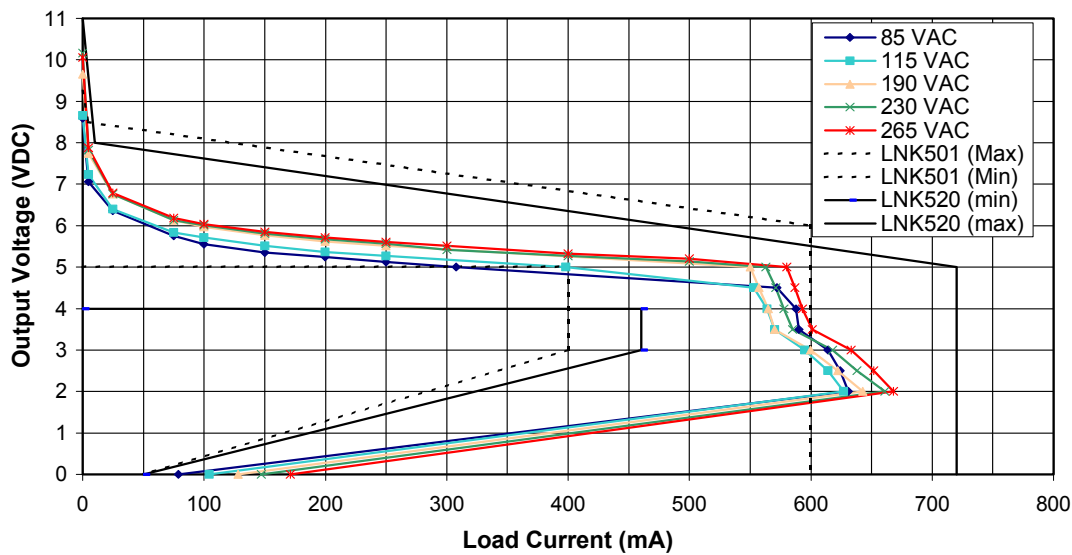


Figure 31 – Load Regulation at Selected Input Voltages (EP-16 Using the LNK520P).

### 11.4.2 Efficiency

Efficiency is slightly lower only due to the lower output voltage at the peak power point. Resistor R1 could be increased slightly to raise the peak power point output voltage and hence, efficiency, if desired.

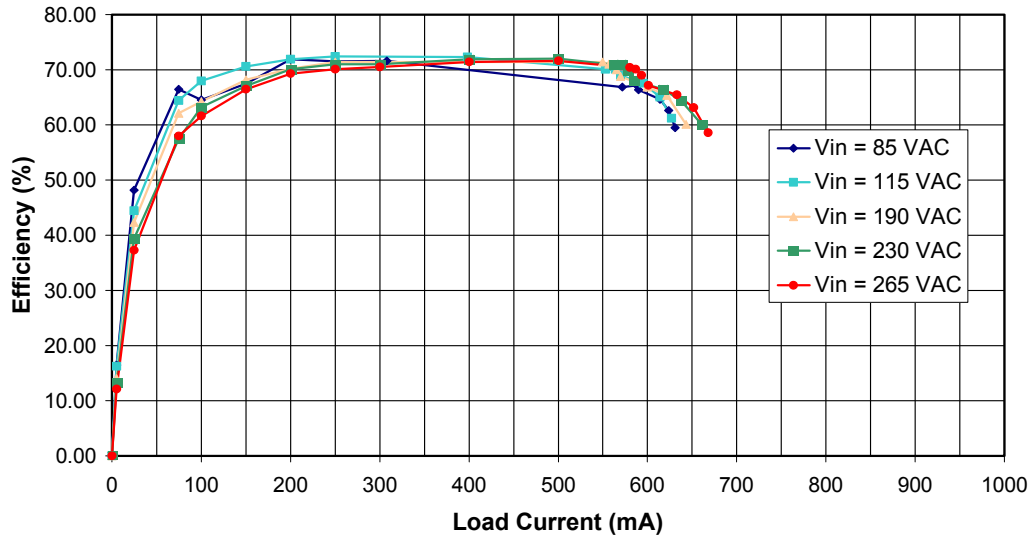


Figure 32 – Efficiency vs. Output Current at Selected Input Voltages.



### 11.4.3 No-Load Input Power

No-load input power is slightly higher due to the higher no-load voltage. However at 260 mW, the design is still well within the 300 mW specified at 230 VAC.

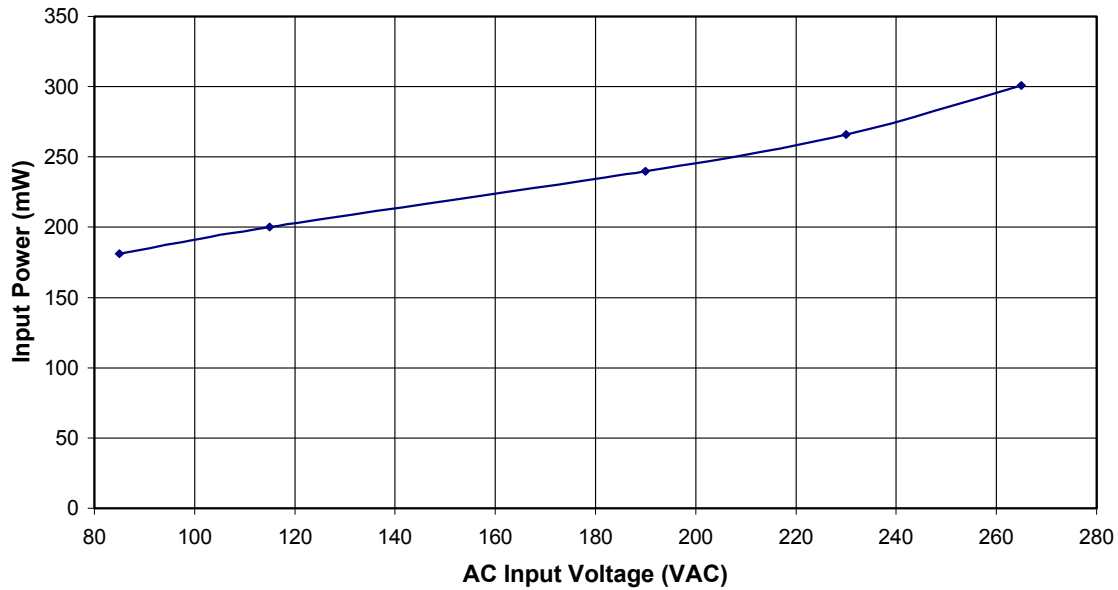


Figure 33 – Zero Load Input Power vs. Input Line Voltage.



### 11.5 EMI Performance

No change in conducted EMI performance was measured. The results of the LNK520P and modified EP-16 were the same as the original EP-16 design, as shown in Figures 24 and 25.

However, the optimized switching characteristics of LNK520P produced a significant reduction in radiated EMI. Figure 34 provides a comparison of quasi-peak radiated emissions with the original EP-16 (LNK501P) and modified EP-16 (LNK520P) designs. A 6 dB $\mu$ V to 12 dB $\mu$ V reduction is shown with the LNK520P device. The results are shown as a comparative reference. Actual radiated emissions levels will vary according to radiated test setup and measurement configurations.

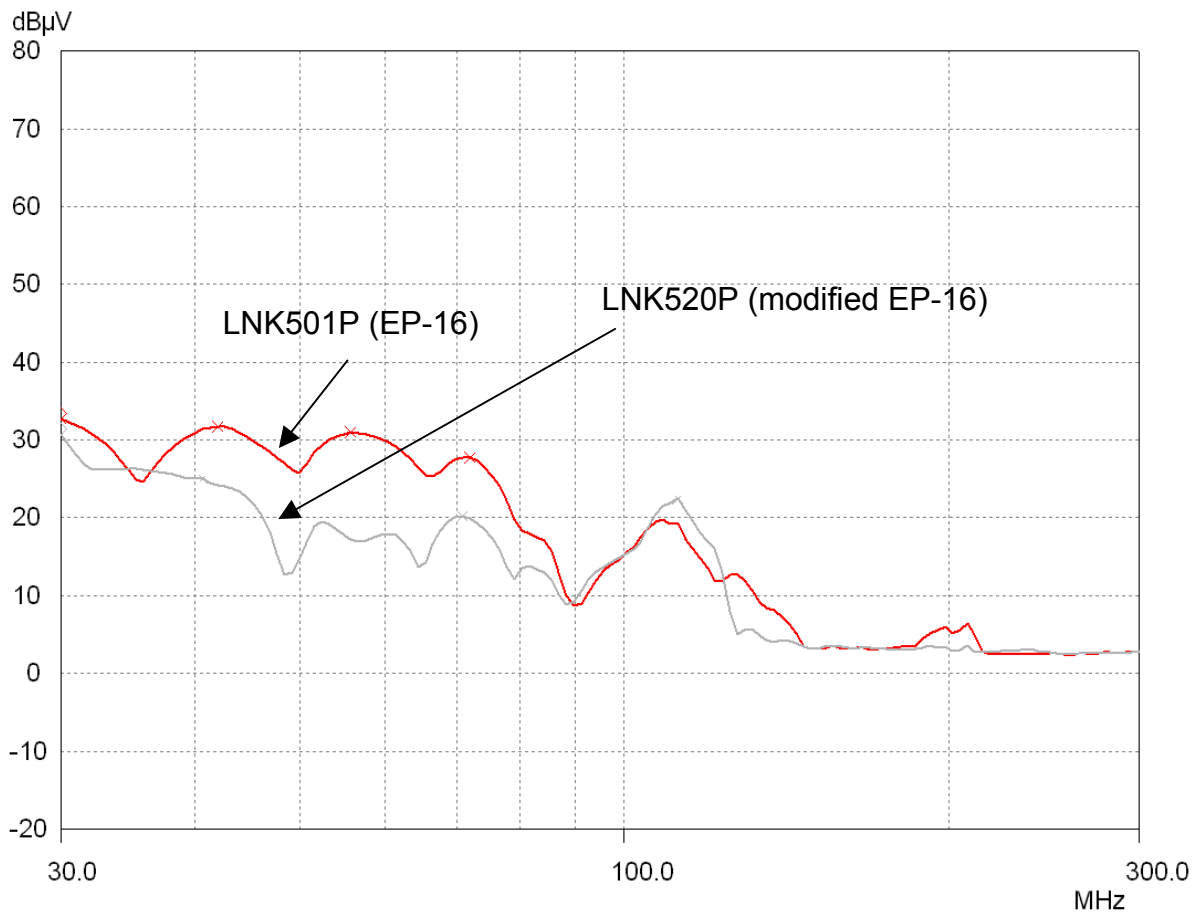


Figure 34 – Comparison of Radiated Emissions,  $V_{IN}$  = 230 VAC, 60 Hz Line, Peak Power Point.

## 12 Revision History

<b>Date</b>	<b>Author</b>	<b>Revision</b>	<b>Description &amp; changes</b>
21-Aug-02	PV	1.1	Transformer symbol dots moved on the schematic (Figure 5)
27-Aug-02	PV	1.2	Caption to Figure 2 updated
14-Jan-03	CW	1.3	Transformer pin out error corrected (Section 7.2)
2-Apr-03	PV	1.4	Updated to include optional components
25-Apr-03	AM	1.5	R3 is replaced with R4
17-May-04	SH	1.6	Added LNK520P in the high-side configuration (Section 11)



**Notes**



For the latest updates, visit our Web site: [www.powerint.com](http://www.powerint.com)

Power Integrations may make changes to its products at any time. Power Integrations has no liability arising from your use of any information, device or circuit described herein nor does it convey any license under its patent rights or the rights of others. POWER INTEGRATIONS MAKES NO WARRANTIES HEREIN AND SPECIFICALLY DISCLAIMS ALL WARRANTIES INCLUDING, WITHOUT LIMITATION, THE IMPLIED WARRANTIES OF MERCHANTABILITY, FITNESS FOR A PARTICULAR PURPOSE, AND NON-INFRINGEMENT OF THIRD PARTY RIGHTS.

#### PATENT INFORMATION

The products and applications illustrated herein (including circuits external to the products and transformer construction) may be covered by one or more U.S. and foreign patents or potentially by pending U.S. and foreign patent applications assigned to Power Integrations. A complete list of Power Integrations' patents may be found at [www.powerint.com](http://www.powerint.com).

The PI Logo, **TOPSwitch**, **TinySwitch**, **LinkSwitch**, and **EcoSmart** are registered trademarks of Power Integrations. **PI Expert** and **DPA-Switch** are trademarks of Power Integrations. © Copyright 2004, Power Integrations.

## Power Integrations Worldwide Sales Support Locations

#### WORLD HEADQUARTERS

5245 Hellyer Avenue,  
San Jose, CA 95138, USA  
Main: +1-408-414-9200  
Customer Service:  
Phone: +1-408-414-9665  
Fax: +1-408-414-9765  
*e-mail: [usasales@powerint.com](mailto:usasales@powerint.com)*

#### GERMANY

Rueckertstrasse 3,  
D-80336, Munich, Germany  
Phone: +49-895-527-3910  
Fax: +49-895-527-3920  
*e-mail: [eurosales@powerint.com](mailto:eurosales@powerint.com)*

#### JAPAN

Keihin-Tatemono 1st Bldg.  
12-20 Shin-Yokohama,  
2-Chome,  
Kohoku-ku, Yokohama-shi,  
Kanagawa 222-0033, Japan  
Phone: +81-45-471-1021  
Fax: +81-45-471-3717  
*e-mail: [japansales@powerint.com](mailto:japansales@powerint.com)*

#### TAIWAN

5F-1, No. 316, Nei Hu Rd., Sec. 1  
Nei Hu Dist.  
Taipei, Taiwan 114, R.O.C.  
Phone: +886-2-2659-4570  
Fax: +886-2-2659-4550  
*e-mail: [taiwansales@powerint.com](mailto:taiwansales@powerint.com)*

#### CHINA (SHANGHAI)

Rm 807, Pacheer,  
Commercial Centre,  
555 Nanjing West Road,  
Shanghai, 200041, China  
Phone: +86-21-6215-5548  
Fax: +86-21-6215-2468  
*e-mail: [chinasales@powerint.com](mailto:chinasales@powerint.com)*

#### INDIA (TECHNICAL SUPPORT)

Innovatech  
261/A, Ground Floor  
7th Main, 17th Cross,  
Sadashivanagar  
Bangalore 560080  
Phone: +91-80-5113-8020  
Fax: +91-80-5113-8023  
*e-mail: [indiasales@powerint.com](mailto:indiasales@powerint.com)*

#### KOREA

8th Floor, DongSung Bldg.  
17-8 Yoido-dong,  
Youngdeungpo-gu,  
Seoul, 150-874, Korea  
Phone: +82-2-782-2840  
Fax: +82-2-782-4427  
*e-mail: [koreasales@powerint.com](mailto:koreasales@powerint.com)*

#### UK (EUROPE & AFRICA HEADQUARTERS)

1st Floor, St. James's House  
East Street  
Farnham,  
Surrey  
GU9 7TJ  
United Kingdom  
Phone: +44-1252-730-140  
Fax: +44-1252-727-689  
*e-mail: [eurosales@powerint.com](mailto:eurosales@powerint.com)*

#### CHINA (SHENZHEN)

Rm# 1705, Bao Hua Bldg.  
1016 Hua Qiang Bei Lu,  
Shenzhen, Guangdong,  
518031, China  
Phone: +86-755-8367-5143  
Fax: +86-755-8377-9610  
*e-mail: [chinasales@powerint.com](mailto:chinasales@powerint.com)*

#### ITALY

Via Vittorio Veneto 12,  
Bresso  
Milano, 20091, Italy  
Phone: +39-028-928-6001  
Fax: +39-028-928-6009  
*e-mail: [eurosales@powerint.com](mailto:eurosales@powerint.com)*

#### SINGAPORE

51 Newton Road,  
#15-08/10 Goldhill Plaza,  
Singapore, 308900  
Phone: +65-6358-2160  
Fax: +65-6358-2015  
*e-mail: [singaporesales@powerint.com](mailto:singaporesales@powerint.com)*

#### APPLICATIONS HOTLINE

World Wide +1-408-414-9660

#### APPLICATIONS FAX

World Wide +1-408-414-9760



**Power Integrations**

Tel: +1 408 414 9660 Fax: +1 408 414 9760  
[www.powerint.com](http://www.powerint.com)